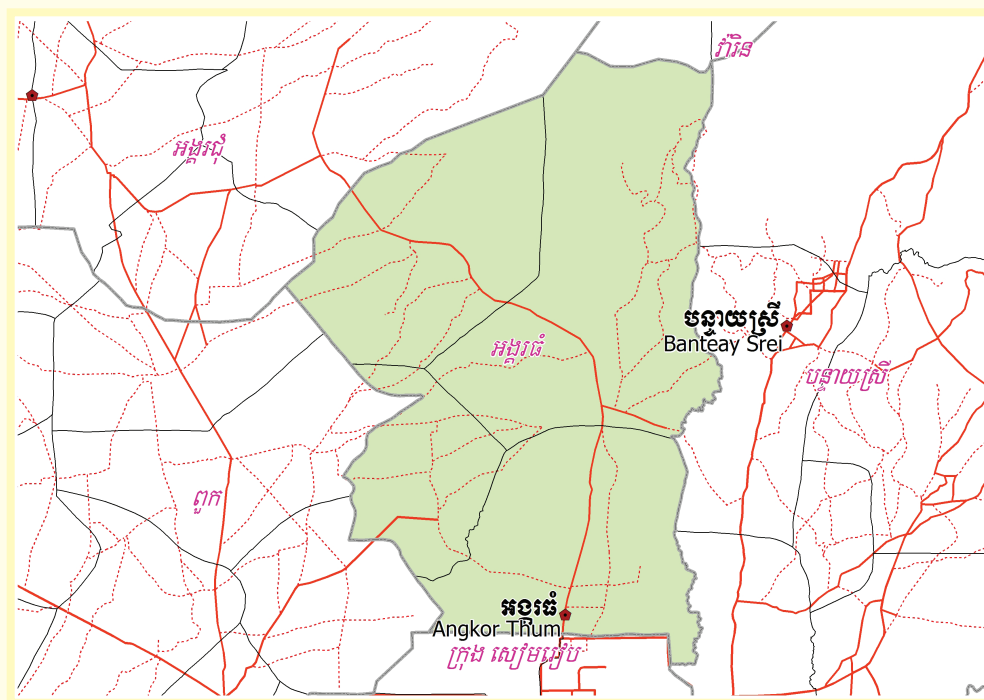


**KINGDOM OF CAMBODIA**  
**Nation Religion King**



**National Committee for Sub-National  
Democratic Development (NCDD)**



**ANGKOR THUM DISTRICT DATA BOOK 2009**

**District Code Nr: 1702**  
**Siem Reap Province**

**October 2009**



# **Angkor Thum District Data Book 2009**

District Code Nr: 1702

**Siem Reap Province**



# Table of Contents

List of Abbreviations .....	i
Glossary.....	ii
Preface .....	vi
Introduction .....	vii
SECTION A: GEOGRAPHY .....	1
1 Administration and Infrastructure.....	3
2 Land Use and Natural Resources.....	5
3 Geography .....	7
3.1 Land Area .....	7
3.2 Distances between Offices .....	7
SECTION B: DISTRICT PROFILE .....	9
1 General Information .....	11
1.1 Population of the District.....	11
1.2 Occupations .....	12
1.3 Property .....	14
2 Infrastructure and Economy.....	16
2.1 Roads in meters over 3 years.....	16
2.2 Sewerage Pipes in meters over 3 years.....	16
2.3 Drainage and Bridges .....	16
2.4 Services in the District .....	16
2.5 Agriculture.....	17
3 Social Aspects .....	28
3.1 Education .....	28
3.2 Health.....	34
3.3 Water and Sanitation .....	36
3.4 Vulnerable groups.....	39
3.5 Migration .....	41
4 Natural Resources and Environment (NRE).....	43
4.1 Families involved with NRE issues over 3 years .....	43
4.2 Percentage of Families involved with Natural Resource issues, by Commune, for 2008 .....	43
4.3 Percentage Houses with access to Garbage collection and Families affected by environmental Pollution, by Commune, for 2008 .....	43
4.4 Percentage Families using chemical Fertilizer and chemical Pesticides, by Commune, for 2008 ..	43
5 Administration and Security .....	44

5.1	Birth Registration across 3 years.....	44
5.2	Number of unregistered Infants born in 2008, by Commune .....	44
5.3	Registered criminal Cases over 3 years .....	44
5.4	Registered criminal Cases per 10,000 people, by Commune, for 2008.....	44
5.5	Number of registered Land Disputes, by Commune, in 2008 .....	44
6	Gender .....	45
6.1	Registered Domestic Violence over 3 years.....	45
6.2	Percentage of registered cases of Families experiencing domestic Violence, by Commune, in 2008 .....	45
6.3	Women's involvement over 3 years.....	45
6.4	Percentage of Female Participants in Civil Society and of 18-60 year women with uncertain Jobs, by Commune, in 2008 .....	46
6.5	Female-headed Households over 3 years.....	46
6.6	Percentage female-headed Households and with Children of less than 5 years old, by Commune, in 2008 .....	46
7	Indigenous People in the District .....	47
7.1	Ethnic Minorities in the District over 3 years.....	47
7.2	Other Minorities in the District over 3 years.....	47
	SECTION C: PLANS AND PROJECTS .....	49
8	Priorities and Plans .....	51
8.1	Priorities of Commune Councils for 2009 in the District by Sector .....	51
8.2	Temporary Agreements by Commune, for 2009 .....	55
8.3	Outputs, estimated and actual costs of C/S Fund Projects between 2005 and 2008, by Commune .....	61
8.4	Total Expenditure on C/S Fund Projects by sector and commune between 2005 and 2008.....	61
8.5	Actual 2009 C/S Fund projects by Commune .....	62
9	District level Projects from 2006 to 2009 .....	63
9.1	District Initiative Infrastructure Projects from 2006 to 2009 .....	63
9.2	District Initiative Service Projects from 2006 to 2009 .....	64
9.3	Inter Commune Council Projects in 2008 and 2009 .....	64
9.4	Other Projects in 2008 and 2009 .....	65
	SECTION D: SERVICES AND ORGANIZATIONS .....	67
10	Infrastructure.....	69
10.1	Length of and Expenditure on Roads in 2008, by District .....	69
10.2	Scale of and Expenditure on Irrigation in 2008, by District.....	69
10.3	Power Supply in 2008, by District .....	70
11	Health Facilities.....	71

11.1 Health Facilities in the Province, by Operational District.....	71
11.2 Health Facilities and Staff in the province, by Operational District.....	71
11.3 Deliveries in 2007 in the Province, by Operational District.....	73
12 Education .....	74
12.1 Schools, Classes, Students, Staff, for for all levels, for 2007/2008 by District.....	74
12.2 Characteristics of Schools and School Principals for 2007/2008 by Commune .....	74
12.3 Enrolment by Level of Education, 2006/2007 by Commune .....	75
12.4 Enrolment by Level of Education, 2007/2008 by Commune .....	75
12.5 Aspects of Enrolment for 2007/2008 by Commune.....	75
12.6 School Buildings for all schools in the District for 2007/2008, by Commune .....	75
12.7 Conditions of Classrooms and Existence of Separate School Office and Library, by Commune	76
12.8 Community Participation and Financing across all schools in the District for 2007/2008 by Commune .....	76
12.9 Percentage Student Flow Rates and Graduation by level 2006/2007, by Commune .....	76
13 Staff and Resources at the District .....	77
13.1 District Councilors elected in 2009 .....	77
13.2 Committees of the Council.....	77
13.3 Board of Governors.....	77
13.4 Offices under Sala Krong, Sala Srok and Sala Khan .....	78
13.5 Municipality/District/Khan line offices.....	78
13.6 Properties and Equipment of District Administration .....	78
13.7 Registered Revenue of the District Administration in 2008 .....	79
13.8 Services in the District .....	79
13.9 Civil Society Organizations active in the District.....	80
13.10 Private Sector Organizations.....	81
SECTION E: POVERTY DATA .....	83
14 Data on Poverty .....	85
14.1 Predicted Poverty Rates for 2009, by commune .....	85
14.2 Poverty data from survey.....	85





## List of Abbreviations

#	Number
AGR	Agriculture
BR	Birth Registration
C. Pilot	Piloted Commune
C/S	Commune / Sangkat
CBO	Community-Based Organization
CDB	Commune Database
CDPD	Commune Development and Planning Database
CIP	Commune Investment plan
CLTS	Community Led-Total Sanitation
Comm.	Commune
Com Cov	Commune Covered
CPA	Complementary Package of Activities
CPS	Community Preschool
CCWC	Commune Committees for Women and Children
DANIDA	Danish International Development Agency
DDLG	Democratic Development and Local Governance Project (EC-UNDP)
DFID	Department For International Development (UK)
DIP	District Initiative Project
DIS	District Information System
District PDRD	District Office of Rural Development
District WP	District Work Plan
DIW	District Integration Workshop
DoLA	Department of Local Administration
Dr	Doctor
DWRM	District Office of Water Resource and Meterology
ECD	Early Childhood education (part of PE)
EMIS	Education Management Information System
Event IC	Celebration of International Days
FDH	Former District Hospital
GTZ	German Society for Technical Cooperation (Gesellschaft für Technische Zusammenarbeit GmbH)
Ha	Hectare
HC	Health Center
HC (NB)	Health Center (no building)
HH	Headed Household
HSI	Intervention for Health
HP	Health Post
HW	Hand Washing
ICC	Inter Commune Council
IFAD	International Fund for Agricultural Development
IND	Industry
Inter-commune	Inter-Commune Project Management Committee or Inter-commune project
IO	International Organization
LASED	Land Allocation for Socio-Economic Development
LGCR	Local Governance for Children's Rights
M&E	Monitoring and Evaluation
MA	Medical Assistant
MoEYS	Ministry of Education, Youth and Sports
MoH	Ministry of Health

MoP	Ministry of Planning
MPA	Minimum Package of Activities
MW1	Primary Midwives
MW2	Secondary Midwives
n/a	Not available
NCD	National Contracts Database
NCDD	National Committee for Sub-National Democratic Development
NGO	Non-Governmental Organization
NRML	Natural Resources Management and Livelihood
NU1	Primary Nurse
NU2	Secondary Nurse
OD	Operational District
ODF	Open Defecation Free
Ope. Costs	Operational Costs
Others	Other Staff
PBW	Public Works
PDoEYS	Provincial Department of Education, Youth and Sport
PDRD	Provincial Department of Rural Development
PDWRM	Provincial Department of Water Resource and Meteorology
PE	Parenting Education
PHAST	Participatory Hygiene and Sanitation Transformation
PHD	Provincial Health Department
PID	Project Information Database
PMC	Project Management Committee
Pop 04-05	Population Covered 2004 or 2005
PSDD	Project to Support Democratic Development through Decentralization and Deconcentration
RRD	Rural Road Development
RH	Referral Hospital
RILGP	Rural Investment and Local Governance Project
RPRP	Rural Poverty Reduction Program
RuLIP	Rural Livelihoods Improvement Program
SIDA	Swedish International Development Cooperation Agency
SPPA	Senior Provincial Program Advisor
TBA	Traditional Birth Attendant
UNDP	United Nations Development Project
UNICEF	United Nations Children's Fund
Vil	Village
Vil Cov	Village Covered
VIL-HC	Distance from Village to Health Center
WASH	Water, Sanitation and Hygiene
WRM	Water Resource and Meteorology

## Glossary

**C/S Fund:** The Commune/Sangkat Fund is established and managed by the Government of Cambodia to provide financial support for development projects and administrative costs of Commune/Sangkat Councils. The amount is determined as a percentage of the National Budget (for 2009: 2.8% over the 2008 budget) and is expected to increase gradually over the years. The total 2009 budget under this fund is \$ 27,643,902 (of which \$ 19,272,170 is for Development Projects and \$ 8,371,731 for Administration). Under the Rural Investment and Local Governance Project the World Bank currently reimburses the costs of development projects if these meet the Bank's criteria.

**CDB:** the Commune Data Base is a national database, compiled by the Ministry of Planning, on the basis of detailed questionnaires, completed at village and commune level, which are then sent to the Departments of Planning for data entry. The most recent round of data collection took place at the end of 2008 (and is reflected in the District Data Books). Commune, District and Provincial Profiles can be generated from this database and should be available from provincial Departments of Planning.

**CDPD:** the Commune Development and Planning Database is a database maintained by Departments of Planning and Ministry of Planning, recording proposed activities as determined and prioritized by Commune and Sangkat Councils; the Temporary Agreements between these councils and supporting agencies, as decided at District Integration Workshops and details on projects that actually take place at commune, district and provincial levels.

**CIP:** The Commune Investment Plan is a rolling three-year plan, developed and decided by the Commune or Sangkat Council. It sets priorities and identifies the projects proposed for the years to come.

**Commune and Sangkat (C/S):** the Communes (in rural areas) and Sangkats (in urban areas) are the lowest and smallest units of local government. Councils are elected directly, once in five years, for the 1417 Communes and 204 Sangkats. In the C/S there are 14,119 villages, which have Village Chiefs, but don't constitute a formal level of local government.

**DIP:** the District Initiative Project is jointly supported by the MDLF (Multi-Donor Livelihood Facility (supporting the NRM&L Program)) and PSDD. In 2009 it covers 106 districts, 60% of the total in the country, with a budget of \$ 3.2 million. It is focused on capacity development in planning, democratic development, public competitive procurement, financial management and service delivery.

**DIS:** The District Information System is a national database maintained by NCDD, recording resources, staff, revenue, infrastructure and equipment available in the 193 Districts and Khans throughout the country. The last update took place in July 2009.

**District, Municipality and Khan** constitutes the third level of Government in Cambodia. There are 159 rural Districts, 26 Municipalities and 8 Khans of Phnom Penh Capital. They all have Councils which were, for the first time, elected in May 2009, by the Commune/Sangkat Councilors. These councils have a mandate for 5 years.

**DIW:** District Integration Workshops are held between July and October, to bring Commune/Sangkat Councils, looking for support for their projects, together with the governmental and non-governmental agencies that may provide support.

**ICC:** Inter Communes Council projects are executed in 10 provinces under the Democratic and Decentralized Local Governance Project (DDLG). This five year project (2006-2010) is executed by Ministry of Interior and funded by the European Commission and UNDP. The project focuses on improving dialogue partnership and accountability; create a network of Commune Councils at the provincial and national level and support and contribute to local area development for poverty reduction. The work under the ICC component supports investments and services formulated through inter-commune dialogue and planning.

**MEDiCAM:** A non-profit and non-partisan membership organization for NGOs active in Cambodia's health sector. It is the primary networking agency for health-related NGOs.

**NCDD:** the National Committee for sub-National Democratic Development is the inter-ministerial body charged with the implementation of the Organic Law (a key legislative document, adopted in 2008, outlining the envisaged decentralization). NCDD also channels substantial financial assistance by a number of Development Partners, to projects and programs at various levels. This amounted to over \$ 91 million in 2008. More information at: [www.ncdd.gov.kh](http://www.ncdd.gov.kh). This website also provides access to reports, manuals, legal documents, details on projects and more.

**OD:** the Operational Districts are the districts as defined and used by the Ministry of Health. These do not coincide with the 193 (Administrative) Districts and Khans, as used by all other RGC agencies. The Operational Districts are usually larger, and so there are 77 Operational Districts against 193 administrative Districts and Khans. However they do fit within the boundaries of administrative provinces.

**PID:** The Project Information Database is the database maintained by NCDD at national and sub national level, to follow all aspects of projects by Commune and Sangkat Councils, including the C/S Fund projects

### **Provincial Investment Fund (PIF)**

The Provincial Investment Fund is allocated to all Provinces and Municipalities according to a population based formula. Part of the fund is earmarked for support to planning activities of the Provincial / Municipal Department of Planning; and to gender mainstreaming activities of the Provincial Department of Women's Affairs. The remaining "un-earmarked PIF" is allocated by PRDC to sectoral technical departments against established criteria and in response to proposals with prioritisation taking into account: priorities formulated by the CS Councils and aggregated by District into District Priority Activities Matrices (DPAM); alignment with national planning and poverty alleviation criteria, complementarity with other planned activities; and performance of the Department concerned in implementation of activities in previous years. With this provisional allocation, the Department then programs activities through the District Integration Process. Finally, the agreed activities, plus support costs amounting to no more than 25% of the total, are included in a sub-contract signed between PRDC and the Department, pursuant to the overall PSDD contract signed between NCDD and PRDC. Total budget has been around \$ 2 million per year.

**Province:** the 23 Provinces and Phnom Penh Capital City represent the 2<sup>nd</sup> layer of government. They vary in size, from very small, like Kep (approx. 36,000 people) and Pailin (approx. 70,000 people), or large but with small populations, like Mondulkiri (over 60,000 people), and Ratanakiri (over 153,000) to densely populated and large, like Kampong Cham (over 1.7 million people) and Kandal (approx. 1.4 Million people).

**PSDD:** the Project to Support Democratic Development through Decentralization and Deconcentration is funded by DFID (UK), SIDA (Sweden) and UNDP and runs from 2006 till the end of 2010 (including a one year extension). Annual budgets range from \$ 11 million to over \$ 18 million. The project provides core technical support to NCDD and to the provinces, financial support to the C/S Fund, District Initiative, Provincial Investment Fund and capacity building support through training, studies and advisory services.

**RILGP:** The Rural Investment and Local Governance Project is a World Bank funded project that provides substantial support to C/S Fund projects and to developing the required infrastructure, policies, systems and skills. It started in 2003 with a Loan for \$ 22 million for 2003-2007 and was then extended with a Grant of \$ 36 million for the period of 2007-2010. Discussions about a possible RILGP 2 are taking place between RGC and the World Bank.

**RPRP:** the Rural Poverty Reduction Project is a seven year project from 2004 till 2010, funded by IFAD and UNDP and implemented through the Ministry of Agriculture, Forestry and Fishery, supported by the Ministry of Interior and facilitated by NCDD. The project is active in the provinces Prey Veng and Svay Rieng and focuses on 120,600 households below poverty line. The objective is poverty reduction with the active participation of the poor through improved livelihoods, Strengthened capacity, Sustainable farming systems and natural resource management, new and/or rehabilitated infrastructure development, increase accessibly to technology, services and markets for their economic and social development.

**RULIP:** the Rural Livelihoods Improvement Project is implemented by the Ministry of Agriculture Forestry and Fisheries (MAFF)' Project Support Unit- PSU, with the NCDD playing the role of cooperating agency. Funded by IFAD and UNDP, the project will run till 2014. The target group consists of poor households who have little or even no land, few livestock or other assets and often many dependents. The main goal of the project is to directly or indirectly improve the livelihood systems, food security and incomes of a total of 33,900 rural poor, ethnic minority and female headed households in targeted village of Kratie, Preah Vihear and Ratanakiri provinces in a sustainable manner.

**Seth Koma:** The UNICEF funded Seth Koma program focuses on measurable action for children and women. During 2006 -2010 it is implemented in six provinces. Government and UNICEF pursue a set of inter-related goals, addressing critical stages of the life cycle of the child: a) Mothers have safe pregnancies and deliveries and healthy newborns; b) best possible start in life of infant; c) Children enter schools at the right age of six years; d) Children are protected from exploitation, abuse, violence, discrimination and other risks; and e) Youth and adolescents acquire life skills, express their views, participate in the decisions.

## **Preface**

The Government of Cambodia attaches great importance to optimal use of scarce resources and to participatory planning and management at all levels. The Organic Law which was adopted in 2008 provides the legal context for further steps towards improving and decentralizing planning, management and monitoring, and towards greater accountability and transparency of institutions at sub-national levels.

The Government has established elected Councils at the sub-national levels, and we will progressively give them the responsibilities, together with the human and financial resources, to deliver a wide range of public services. They will be more democratic, more efficient, more transparent and accountable, better at addressing gender and other inequalities, and at fighting corruption. We recognize that development does not come from government alone; it needs the involvement of citizens, civil society and the private sector, and the new system will facilitate this.

A central element in this process is the availability of information on any aspect of development to all concerned parties. The newly elected Councillors at District and Khan level, line departments operating at these levels, but also NGOs, Development Partners, Commune Councillors and citizens throughout Cambodia need information on problems and requirements, resources and opportunities, services and agencies, plans and projects. They will need such information to better understand the present situation, set targets for the future, monitor progress, know what others are doing and to apply resources wisely and this is the reason the District Data books will be so valuable.

The District Data Books are a major step towards full transparency and towards informed planning and decision-making. They provide all available data at District, Khan, Commune and Sangkat level in easily accessible formats, in Khmer and English, through over 16,000 printed copies, CD-ROMs and the NCDD website.

This is the first time in Cambodia (and possibly in South East Asia) that such detailed information is made so widely available and NCDD should be commended for the hard work that has gone into this. We also thank the Ministry of Planning, which provided the detailed data of the Commune Data Base, the sectoral ministries and provincial authorities who contributed data and the Development Partners who provided financial support.

It is our sincere hope that the publication of the District Data Books will strengthen capacities, especially at district levels, for evidence-based development planning. We also hope that this information will deepen the understanding among Ministries, Provincial Authorities, Development Partners, NGOs and research agencies of the realities at commune and district levels.

We call upon all to use and distribute this information, complement or correct where appropriate and to contribute new data in the years to come.

**Sar KHENG**

Deputy Prime Minister, Minister of Interior and Chairman of NCDD

# Introduction

## Purpose

The purpose of the District Data Books is to bring together information on any aspect of life and development of Districts, Khans, Communes and Sangkat, together and make this widely available. The primary targets are the newly elected District Councilors, district level line departments, provincial agencies, Development Partners and NGOs operating at this level. They need detailed knowledge on current living conditions, natural resources, infrastructure, agriculture and other economic activities, current service levels, past and planned projects and available resources.

While much information exists on many of the above aspects, it is often hard to access that information and much is lost to reports, databases and statistics that are not widely shared. Data are often only available in one language and often out-of-date, and many reports cover only one sector or region.

We found that these problems are especially acute at the district level. Now that Districts are becoming a much more significant level of local government and development planning, there is an urgent need for wide-ranging data to be used for setting base-lines, planning and prioritizing, monitoring and learning.

## Approach

We have attempted to identify and compile all available statistics, reports, maps and other data at district and/or commune level. From this we have selected information that is available for all or most districts, reasonably reliable and up-to-date, sufficiently detailed and of possible interest to development planners, decision makers, agencies and citizens.

The major sources of the information in these District Data Books are:

- a) The Commune Data Base information over the years 2006 to 2009 (the most recent data were collected late last 2008), as compiled by the Ministry of Planning
- b) Detailed information directly collected from the Ministry of Health, the Ministry of Education, Youth and Sports and (for maps) the Ministry of Land Management, Urban Planning and Construction
- c) The Project Information Database (PID) at NCDD (up-to-date)
- d) The Commune Development and Planning Database (CDPD) (up to date)
- e) The District Information System (DIS) (updated per Mid 2009)
- f) Direct data collection at provincial and district level on private sector, irrigation, roads, and electricity, through provincial agencies
- g) Medical data collected from MEDiCAM
- h) The ID Poor Project – for poverty data on a number of provinces and districts
- i) NCDD's work on predictive poverty rates
- j) Specific projects for outputs, plans and budgets (Seth Koma, RILGP, RPRP and ICC)

## Limitations of the data

We are fully aware that the data we collected are not always complete, consistent or correct. While we have rejected information that was wrong or very incomplete, we decided not to aim for statistical and scientific perfection, but to include information that is useful, relevant

and comprehensive. We also accepted different sources for the same data as this may encourage discussion on the quality of the respective data.

We strongly encourage anyone who notes errors or incompleteness in these data to contact us and to share their data. We hope that the next round of producing such District Data Books can draw on wider sources and more complete data.

We encourage the District Administrations, who receive these data also in digital format, not only to use these for their planning and monitoring, but also to start correcting and updating these data and to share new data with NCDD for future use.

## Contents

The information in the following pages is organized in five sections:

- a) **Geographical data:** this section provides maps on infrastructure and administration and on land use and natural resources management. These maps are also provided in large format to all Districts and Khans.
- b) **District Profile:** this presents wide ranging data, covering 2006 – 2009, at district and commune level, extracted from the Commune Data Base, but edited for better understanding.
- c) **Plans and Projects:** this section presents development priorities determined by Commune and Sangkat Councils, Temporary Agreements, outputs and expenditure of major projects at Commune and District level over 2006 – 2008 and plans and budgets for 2009.
- d) **Services and Organizations:** this section provides details on key infrastructure (roads, electricity, irrigation systems) and services in health and education at district and commune level. It also provides an inventory of resources at the District Administration, NGOs operating in the district and private sector agencies active in the district.
- e) **Poverty Data:** this section provides predicted poverty rates for 2009 for all districts and communes and detailed poverty data compiled and processed by the ID Poor project for those that have been covered by this project.

## The future

It is our hope that this is the start of a longer-term process. We hope that a next edition of these District Data Books will offer more comprehensive, correct and up-to-date information. We hope that the District Administrations will not only start using this information, but also improve and update it. For this they are all provided with the full data set in digital format.

We invite agencies, projects and experts to send reports, statistics and maps that could be used for a next version to us and we invite all users of the District Data Books to inform us about errors, updates and inconsistencies. Please contact us through [info@ncdd.gov.kh](mailto:info@ncdd.gov.kh)

We now invite you to browse through this data book. You may open this randomly or use the table of contents and go to the aspects that have your special interest.

We hope that you will be informed, surprised and assisted. We hope, above all, that this information will lead to a deeper understanding of causes and effects of poverty, to purposeful decisions on how to tackle those causes and to greater transparency in using scarce resources for the benefit of all.

Martin de Graaf  
Program Advisor, PSDD/NCD



## **SECTION A: GEOGRAPHY**



# **1 Administration and Infrastructure**

Please see separate folder containing A3 maps.



## **2 Land Use and Natural Resources**

Please see separate folder containing A3 maps



### 3 Geography

#### 3.1 Land Area

Total Land Area (ha)	Forest Land Area (ha)		Cultivation Land Area (ha)	Construction Land Area (ha)	Other Land Area (ha)
	Total	Flooded Forest Area			
307500	18143	115	5384	3853	3255

#### 3.2 Distances between Offices

Location	Distance (Km)
From District Office to C/S Office of Chob Ta Trav	15
From District Office to C/S Office of Leang Dai	0.1
From District Office to C/S Office of Peak Snaeng	7
From District Office to C/S Office of Svay Chek	6





## **SECTION B: DISTRICT PROFILE<sup>1</sup>**

---

<sup>1</sup> All data in this section come from the Commune Database (CDB) unless otherwise specified. These include primarily new CDB data, collected late 2008, and some data from earlier years. Please note that percentages are rounded to the nearest whole number.



# 1 General Information

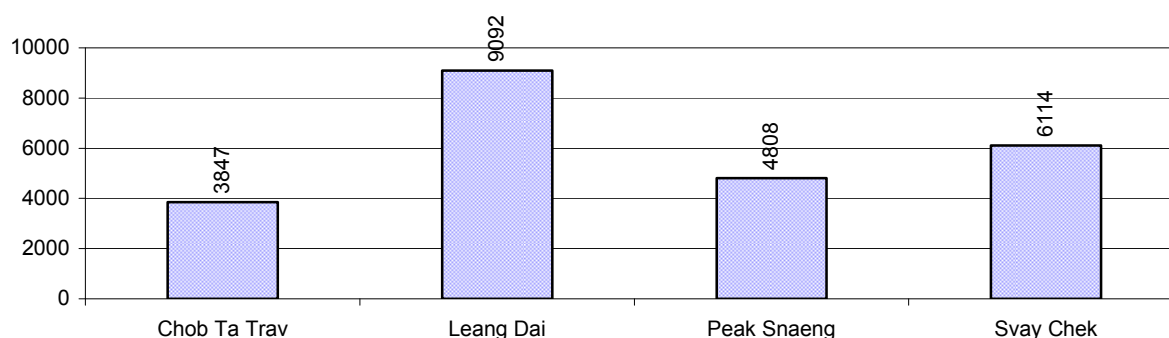
## 1.1 Population of the District

### 1.1.1 Total Population

Number of families	2005	2006	2007	2008
Total number of families	3,862 families	4,059 families	4,265 families	4,547 families
Increase (+)/Decrease (-) in nr of families		5%	5%	7%
Total population	21,243 pers	21,933 pers	22,662 pers	23,861 pers
Increase (+)/Decrease (-) in nr of people		3%	3%	5%
Number of female Headed Households (HH)	376 families	518 families	473 families	622 families

**Note:** Percentages of population and increase/decrease are calculated on basis of the previous year. A negative sign in front of the percentage indicates a decrease in population.

### 1.1.2 Population, by Commune, in 2008



### 1.1.3 Population, by Age Group, over 3 years

Population by age group	2006	2007	2008	
	%	%	%	Number
<b>Age 0-5 years (as percentage of the population)</b>	17%	16%	16%	3,893 persons
Male 0-5 yrs	48%	48%	48%	1,878 persons
Female 0-5 yrs	52%	52%	52%	2,015 persons
<b>Age 6-17 (as percentage of the population)</b>	33%	32%	32%	7,553 persons
Male 6-17 yrs	48%	48%	48%	3,597 persons
Female 6-17 yrs	52%	52%	52%	3,956 persons
<b>Age 18-60 (as percentage of the population)</b>	48%	49%	48%	11,528 persons
Male 18-60 yrs	48%	48%	49%	5,619 persons
Female 18-60 yrs	52%	52%	51%	5,909 persons
<b>Age 61 above (as percentage of the population)</b>	3%	3%	4%	887 persons
Male 61	45%	46%	45%	400 persons
Female 61	55%	54%	55%	487 persons

**Note:** The overall percentage for each age group is calculated on the basis of the total population. The gender distribution of each group is calculated on the basis of the population within that particular age group.

## 1.2 Occupations

### 1.2.1 Percentage of families with a particular Occupation over 3 years

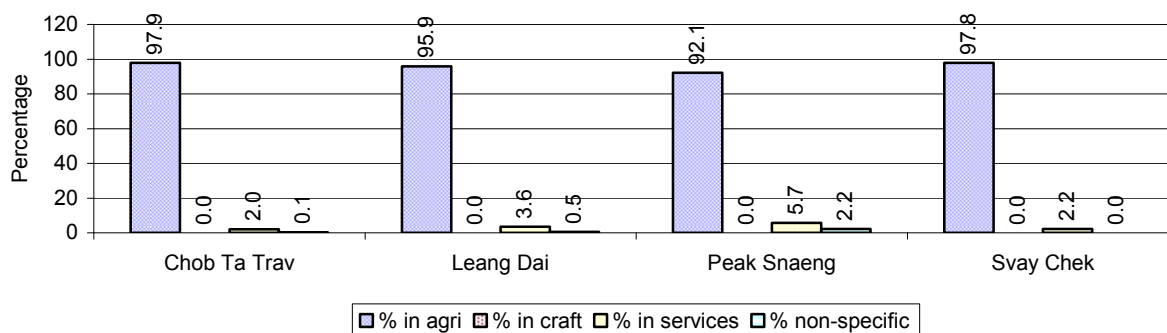
*This table shows the percentage of the population who have a particular occupation (job), for example the percentage of the population in the district who are rice farmers, furniture crafter, trader, etc.*

Description	2006	2007	2008	
	%	%	%	Number
<b>Families whose main occupation is agriculture</b>	97%	94%	96%	4,361 Families
Families whose primary occupation is rice farming	97%	94%	95%	4,317 Families
Families whose primary occupation is cultivating long-term crops	0%	0%	0%	20 Families
Families whose primary occupation is cultivating short-term crops	0%	0%	0%	19 Families
Families whose primary occupation is cultivating vegetable	0%	0%	0%	5 Families
Families whose primary occupation is fisherman	0%	0%	0%	0 Families
Families whose primary occupation is livestock farmer	0%	0%	0%	0 Families
Families whose primary occupation is NTFP collection	0%	0%	0%	0 Families
<b>Families whose main occupation is craft work</b>	0%	0%	0%	0 Families
Families, whose main occupation is in furniture craft, wooden, rattan, vine, bamboo	0%	0%	0%	0 Families
Families whose main occupation is in metal, aluminum, glass goods production	0%	0%	0%	0 Families
Families whose main occupation is food production	0%	0%	0%	0 Families
Families whose main occupation is tire, plastics and rubber goods production	0%	0%	0%	0 Families
Families whose main occupation is textile, clothing goods production	0%	0%	0%	0 Families
Families whose main occupation is in other production, not listed above	0%	0%	0%	0 Families
<b>Families whose main occupation is services</b>	3%	3%	3%	155 Families
Families whose main occupation is trade	0%	1%	1%	42 Families
Families whose main occupation is repair	0%	0%	0%	8 Families
Families whose main occupation is providing transport services	0%	1%	0%	6 Families
Families whose main occupation is providing other services	2%	1%	2%	99 Families
Families whose main occupation is not clear (or multi)	0%	3%	1%	31 Families

**Note:** The occupation percentages are calculated on the basis of the total number of families.

### 1.2.2 Percentage Families that work in one of four occupational sectors, by Commune in 2008

This table indicates the percentage of families involved in one of four occupation types: agriculture, craft, services or non-specific (other). Please note agriculture includes forestry activities such as cutting down trees and gathering gum from the trees.



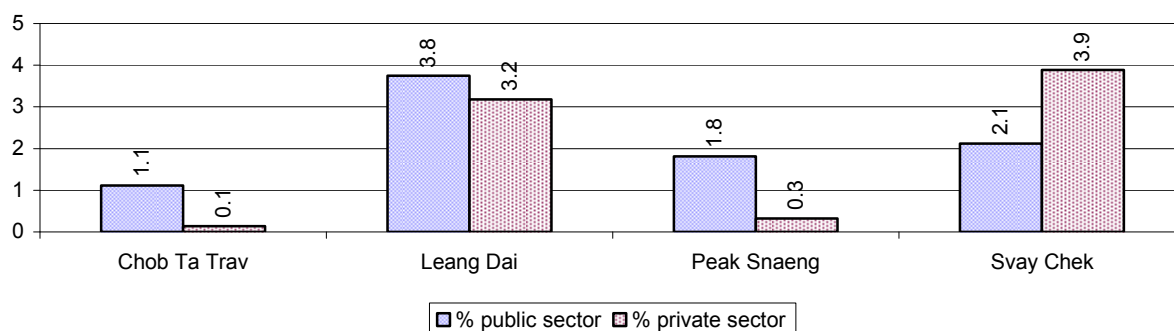
**Note:** Calculated on the basis of the total number of families within a commune.

### 1.2.3 Percentage of Families with public Sector, private Sector or uncertain Jobs, over 3 years

Description	2006	2007	2008	
	%	%	%	Number
Families that have a family member who is a government official, staff or worker	2%	2%	3%	115 families
Families that have a family member who is a private sector staff or worker	0%	2%	2%	104 families
Number of people aged 18-60 with uncertain/irregular jobs	1%	0%	1%	60 persons

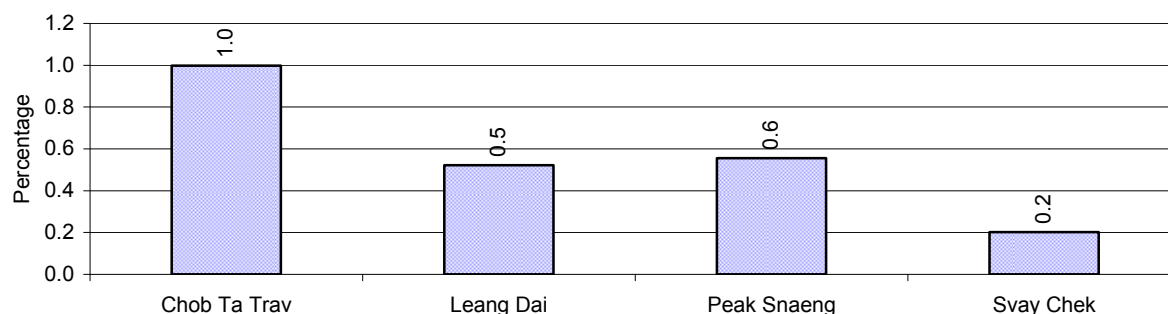
**Note:** In the first two rows percentages are calculated on the basis of the total number of families. In the third row the percentage is calculated on the basis of the total number of people aged 18-60 years.

### 1.2.4 Percentage of Families with public or private Sector Jobs, by Commune in 2008



**Note:** Calculated on the basis of the total number of families in the commune

### 1.2.5 Percentage of People aged 18-60 years with uncertain/irregular Jobs, by Commune, in 2008.



## 1.3 Property

### 1.3.1 Housing types and facilities over 3 years

This table shows the percentage of people living in a certain type of house. It also indicates how many houses have electricity or battery powered lights and how many have TV.

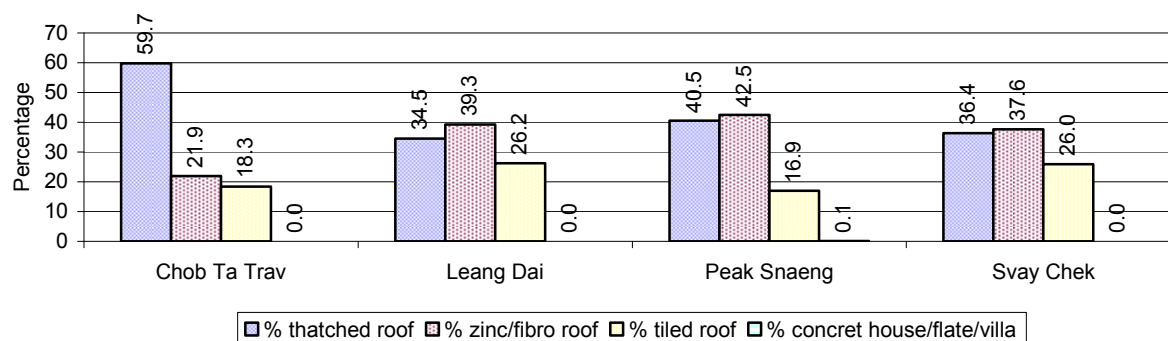
House Type	2006	2007	2008	
	%	%	%	Number
House with thatched roof	52 %	47 %	40 %	1,799 houses
House with zinc/fibro roof	25 %	31 %	37 %	1,650 houses
House with tiled roof	23 %	23 %	23 %	1,032 houses
Flats/apartments (with many families living)	0 %	0 %	0 %	0 houses
Concrete house or flat (with one family living)	0 %	0 %	0 %	1 houses
Villa house	0 %	0 %	0 %	0 houses
Houses with electricity	0 %	0 %	0 %	0 houses
Houses with battery light	40 %	50 %	49 %	2,178 houses
Houses with TV	36 %	46 %	47 %	2,121 houses

**Note:** Calculated against the total number of houses

### 1.3.2 Families living on public Land or without a permanent House

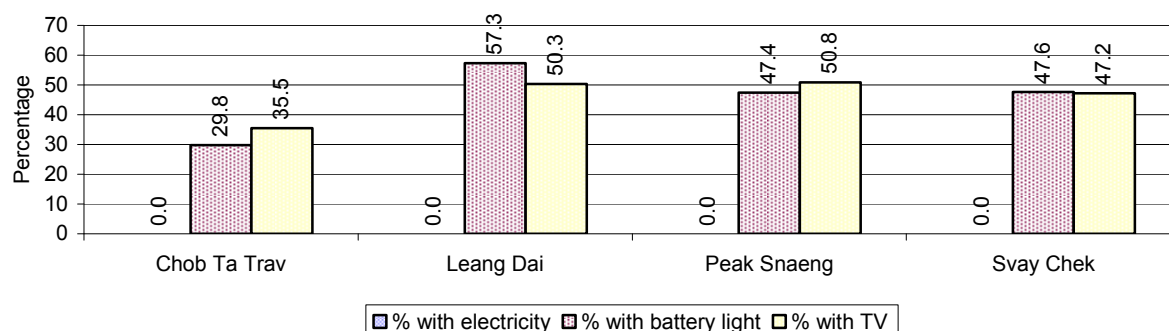
Living situation	2006	2007	2008
Families living in a house on public land	0 families	4 families	8 families
People, without permanent housing	15 person(s)	1 person(s)	4 person(s)

### 1.3.3 Percentage of Population living in a particular type of House, by Commune, in 2008



**Note:** Calculated against the total number of houses in each commune

### 1.3.4 Percentage of Houses with Electricity, Battery Lights and/or TVs, by Commune, in 2008



**Note:** Calculated against the total number of houses in each commune

### 1.3.5 Types of Vehicles and their ratio to Families across 3 years

This table shows the number of families per vehicle in the district. The last column shows the total number of each type of vehicle in the district for 2008.

Description	2006 ratio	2007 ratio	2008	
			Ratio	Number
Bicycle and bicycle with trailer	1	1	1	4,612
Ox-carts and horse-carts	4	4	4	1,246
Motorbike/with trailer	5	3	3	1,596
Motor tri-cycle	677	1,066	909	5
Large Transportation				
<b>Total number of cars/trucks</b>	88	70	76	60
Locally made vehicles	290	267	284	16
Trucks for goods transport	162	158	217	21
Buses/mini buses for passengers	N/A	N/A	4,547	1
Family cars	580	237	207	22
Agriculture machinery				
Tractors used for plowing	N/A	N/A	N/A	0
Power-tillage used for plowing	81	49	37	124
Other type of machinery				
Other type of machinery	N/A	4,265	N/A	0
Water transportation				
Row boats	N/A	N/A	N/A	0
<b>Total number of motor boats</b>	N/A	N/A	N/A	0
Motor boats used for fishing	N/A	N/A	N/A	0
Motor boats used for passengers	N/A	N/A	N/A	0
Motor boats used for goods transporting	N/A	N/A	N/A	0

**Note:** Ratio of families to a particular type of vehicle is the result of the total number of families divided by total number of that type of vehicle. Other types of vehicles, such as bulldozer, excavator, rollers etc. are not listed.

## 2 Infrastructure and Economy

### 2.1 Roads in meters over 3 years

Description	2006	2007	2008
Bituminous road	0 m	0 m	0 m
DBST, Macadam road	0 m	0 m	0 m
Concrete road	0 m	0 m	0 m
Laterite road	45,000 m	31,000 m	49,000 m
Constructed earth road	25,908 m	23,150 m	23,900 m
Un-constructed earth road	113,300 m	4,800 m	31,200 m

### 2.2 Sewerage Pipes in meters over 3 years

Description	Sewage pipe length		
	2006	2007	2008
Total length of sewage pipe, diameter 30-50 cm	0 m	0 m	0 m
Length of newly constructed sewage pipe, diameter 30-50 cm	0 m	0 m	0 m
Length of sewage pipe, diameter 30-50 cm needs repair/rehabilitation	0 m	0 m	0 m
Total length of sewage pipe, diameter of pipe 60-100 cm	0 m	0 m	0 m
Length of newly constructed sewage pipe, diameter 60-100 cm	0 m	0 m	0 m
Length of sewage pipe, diameter 60-100 cm needs repair/rehabilitation	0 m	0 m	0 m
Sewage pipe, diameter of pipe over 100 cm	0 m	130 m	130 m
Length of newly constructed sewage pipe, diameter over 100 cm	0 m	15 m	15 m
Length of sewage pipe, diameter over 100 cm needs repair/rehabilitation	0 m	10 m	10 m

### 2.3 Drainage and Bridges

Construction Type	2006		2007		2008	
	place(s)	Length	place(s)	Length	place(s)	Length
Single pipe culvert	71	86m	79	178 m	78	308 m
Double-pipe culvert	15	19m	7	78 m	9	36 m
Box pipe culvert	18	57m	12	50m	17	75 m
Wooden bridge	0	0m	0	0m	0	0 m
Concrete bridge	6	83m	6	93m	6	47 m
Bale bridge	0	0m	0	0m	0	0 m
Spillway construction	5	120m	3	110m	4	110 m

### 2.4 Services in the District

Descriptions	Number of places by year		
	2006	2007	2008
<b>Public</b>			
Electricity generating stations	0	5	0
Health clinics	0	0	0
<b>Private</b>			
Bicycle and motorcycle repair places	17	20	17
Agricultural machinery, tools and equipment repair places	2	2	4
Electronic tool repair places	2	2	3
Battery-charging services	23	43	19
Handicraft places, wooden furniture and forest by-products	0	0	0
Other handicraft places (excluding furniture)	0	0	1
Small-scale services (hairstylist, phone service, massage,	7	4	9



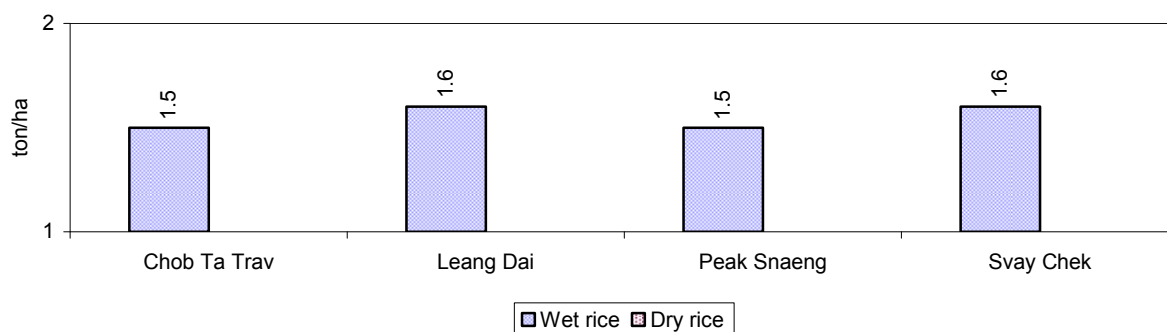
Descriptions	Number of places by year		
	2006	2007	2008
Karaoke, etc)			
Small-scale food shop businesses (Food, groceries, drink shop, etc)	28	38	18
Small-scale rice mills	100	133	128
Medium or large-scale rice mills	0	0	0
Small-scale markets	1	1	1
Large-scale market	0	0	0
Alcohol refinery places	0	0	8
Pharmacies and small drug stores	0	0	0
Hotels	0	0	0
Guest houses	0	0	0
Restaurants	0	0	0
Gasoline stations	0	0	0

## 2.5 Agriculture

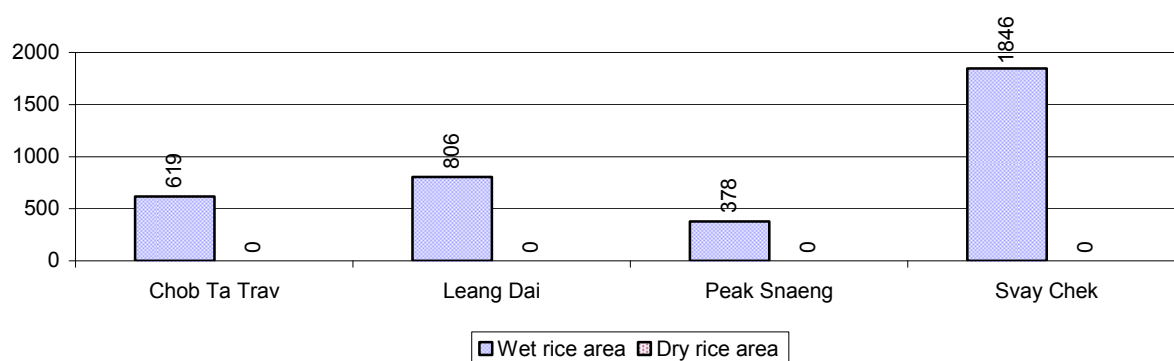
### 2.5.1 Rice cultivation in the District over 3 years

Description	2006	2007	2008
Total dry rice land area	0 ha	0 ha	0 ha
Actual dry rice cultivation area	0 ha	0 ha	0 ha
% actual cultivation to total land	-%	-%	-%
Total dry rice production	- tonne(s)	- tonne(s)	- tonne(s)
Average dry rice yield	- tonne(s)/ha	- tonne(s)/ha	- tonne(s)/ha
Total wet rice land area	3,491 ha	3,715 ha	4,132 ha
Actual wet rice cultivation area	3,491 ha	3,712 ha	3,649 ha
% actual cultivation to total land	100 %	100%	88%
Total wet rice production	4,538.30 tonne(s)	4,176.00 tonne(s)	5,655.95 tonne(s)
Average wet rice yield	1.3 tonne(s)/ha	1.1 tonne(s)/ha	1.6 tonne(s)/ha
Total intensive rice land area	0 ha	0 ha	0 ha
Actual intensive rice cultivation area	- ha	- ha	- ha
Average intensive rice yield	- tonne(s)/ha	- tonne(s)/ha	- tonne(s)/ha
Actual upland rice cultivation area	762 ha	695 ha	2,402 ha
Total upland rice production	914 tonne(s)	695 tonne(s)	3,723 tonne(s)
Average upland rice yield	1.2 tonne(s)/ha	1.0 tonne(s)/ha	1.6 tonne(s)/ha

## 2.5.2 Estimated wet and dry Season Rice Yield in tonne(s)/Ha, by Commune, in 2008



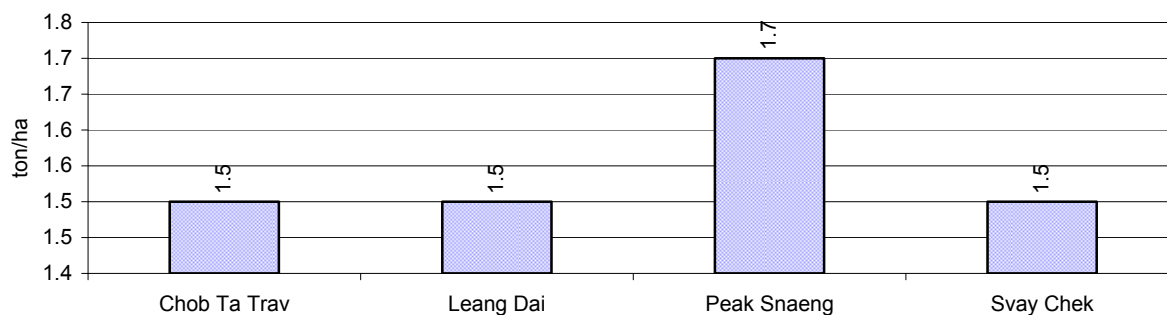
## 2.5.3 Cultivated wet and dry Season Rice areas in Ha, by Commune, in 2008



## 2.5.4 Estimated intensive Rice Yields in tonnes/Ha, by Commune, for 2008

There were no estimated intensive rice yields in this District in 2008

## 2.5.5 Estimated upland Rice Yield in tonnes/Ha, by Commune, for 2008

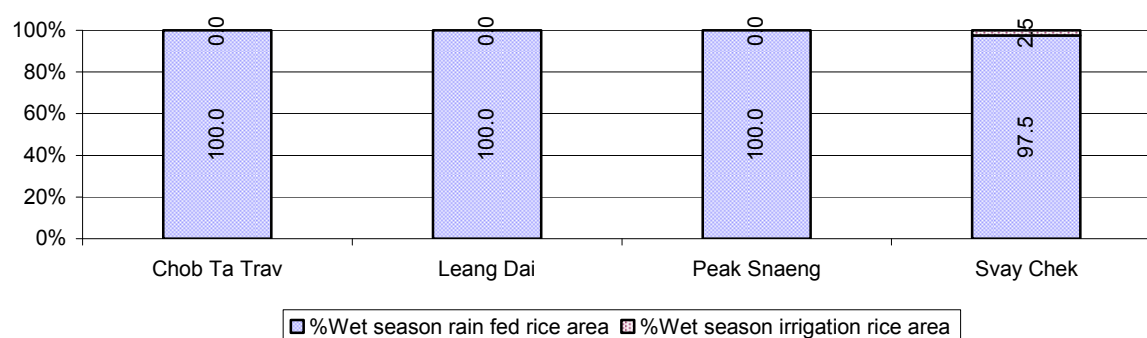


### 2.5.6 Wet season Rice irrigation across 3 years

Description		2006 %	2007 %	2008	
				%	Number
Total area of wet season rain fed rice land		100%	54%	99 %	3,603 ha
Percentage of wet season rice land that is irrigated; and for 2008 area in Ha		0 %	46 %	1 %	46 ha
Where	Area irrigated from canal/dam	- %	100 %	100 %	46 ha
	Area irrigated from river, stream, lake, natural pond	- %	0 %	0 %	0 ha
	Area irrigated from drilled well	- %	0 %	0 %	0 ha
	Area irrigated from dug pond	- %	0 %	0 %	0 ha

### 2.5.7 Water sources for wet Season Rice Cultivation, by Commune, in 2008

This chart shows the percentage of wet season rice cultivation receiving water from rain (natural) and from irrigation.



### 2.5.8 Access to Irrigation

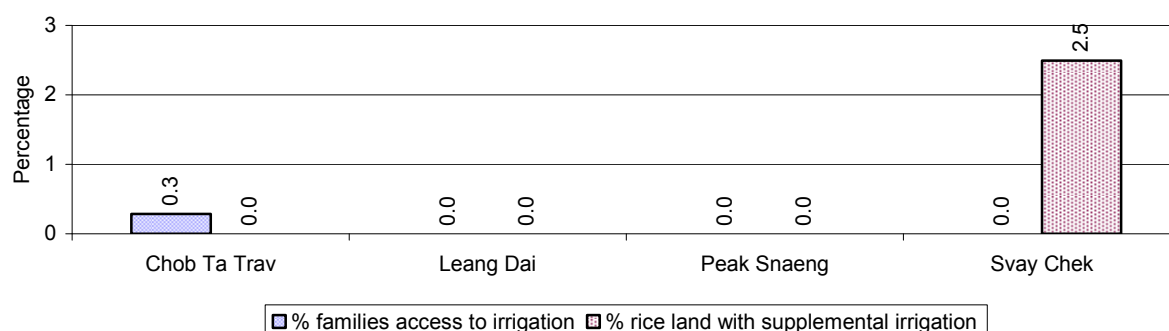
Description	2006 %	2007 %	2008	
			%	Number
Families who have access to irrigation water	0%	0%	0%	2 families
Families who have irrigation wells	0%	0%	0%	0 families

**Note:** Calculated against the total number of families are rice farmers

### 2.5.9 Number of Irrigation Wells over 3 years

Description	2006	2007	2008
Number of irrigation wells	0 wells	0 wells	0 wells

### 2.5.10 Percentage of Families with access to (supplemental) Irrigation for wet Season Rice cultivation, by Commune, in 2008



**Note:** % of families, with access to irrigation is calculated against the total number of families, whose main occupation is rice farming. Irrigated wet rice land area is calculated against the total actual wet rice land cultivated areas

### 2.5.11 Irrigation Wells, by Commune, in 2008

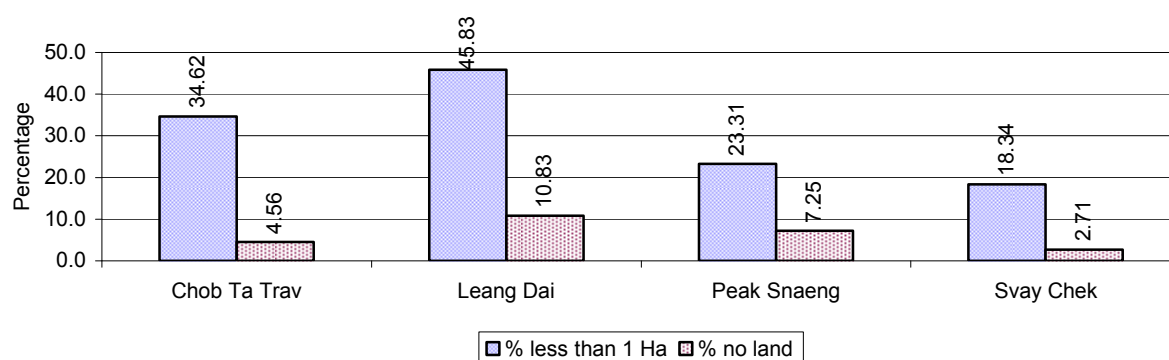
There are no irrigations wells in this District in 2008

### 2.5.12 Farmers owning less than one hectare of Rice Land

Description	2006 %	2007 %	2008	
			%	Number
Families who have less than one hectare of rice land	50%	33%	33%	1,409 families
Families who do not own any rice land	6%	4%	7%	304 families

**Note:** Calculated on basis of total number of families who are rice farming

### 2.5.13 Percentage of Farmers with less than one Hectare or no Rice Land, by Commune, in 2008

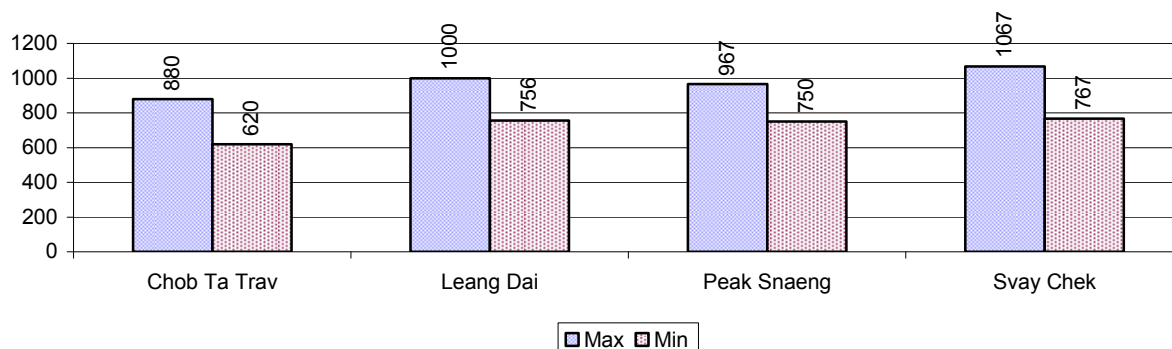


**Note:** Calculated on basis of total number of families who are rice farming

### 2.5.14 Average farm-gate Prices of Rice, over 3 years

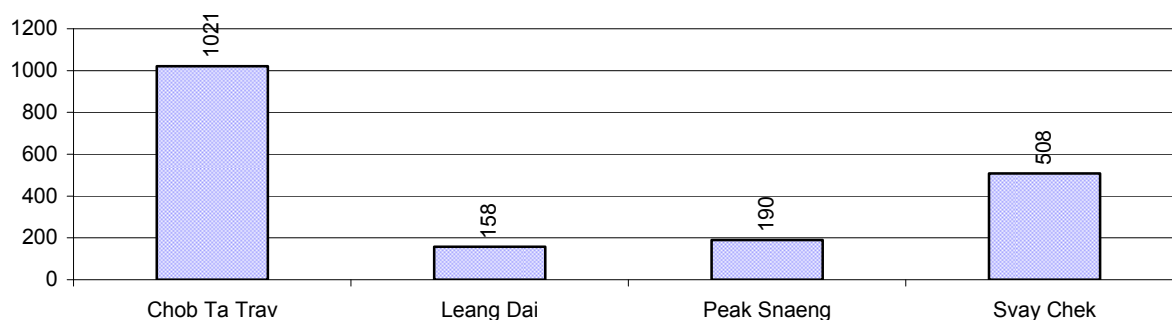
Description	2006	2007	2008
Maximum average farm gate price	510 Riels/Kg	860 Riels/Kg	978 Riels/Kg
Minimum average farm gate price	420 Riels/Kg	632 Riels/Kg	723 Riels/Kg
Average farm gate price	465 Riels/Kg	746 Riels/Kg	851 Riels/Kg
Average rice production per person	249 Kg/person	215 Kg/person	393 Kg/person

### 2.5.15 Minimum and maximum farm-gate Prices of Rice in Riel/kg, by Commune, in 2008



### 2.5.16 Production of Paddy in Kgs/Person, by Commune, in 2008

This table shows how much paddy (harvested rice) is produced in a year in a commune, in kgs per person.

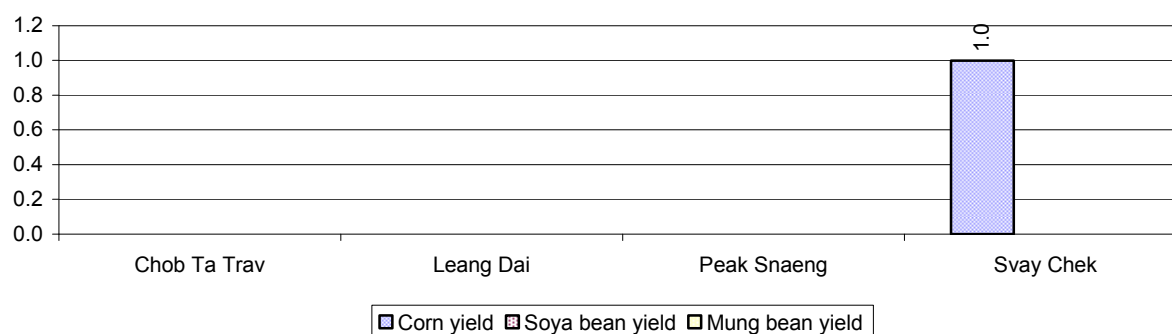


### 2.5.17 Production of other Crops, over 3 years

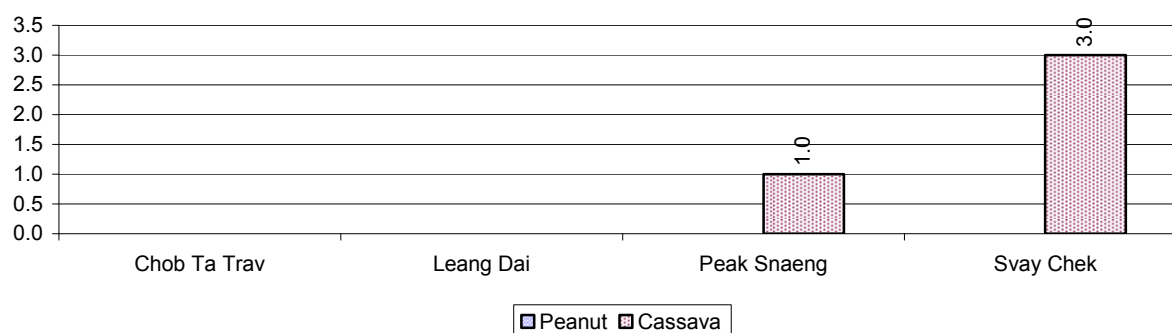
Crops	2006	2007	2008
Corn cultivation area	0 ha	0 ha	1 ha
Estimated corn yield	- tonne(s)/ha	- tonne(s)/ha	1.0 tonne(s)/ha
Estimated corn production	- tonne(s)	- tonne(s)	1 tonne(s)
Soya bean cultivation area	0 ha	0 ha	0 ha
Estimated Soya bean yield	- tonne(s)/ha	- tonne(s)/ha	- tonne(s)/ha
Estimated Soya bean production	- tonne(s)	- tonne(s)	- tonne(s)
Mungbean cultivation area	0 ha	1 ha	0 ha
Estimated Mungbean yield	- tonne(s)/ha	0.3 tonne(s)/ha	- tonne(s)/ha
Estimated Mungbean production	- tonne(s)	0 tonne(s)	- tonne(s)
Peanut cultivation area	0 ha	0 ha	0 ha
Estimated Peanut yield	- tonne(s)/ha	- tonne(s)/ha	- tonne(s)/ha
Estimated Peanut production	- tonne(s)	- tonne(s)	- tonne(s)
Cassava cultivation area	0 ha	2 ha	36 ha
Estimated Cassava yield	- tonne(s)/ha	1.0 tonne(s)/ha	2.0 tonne(s)/ha
Estimated Cassava production	- tonne(s)	2 tonne(s)	72 tonne(s)
Sweet potatoes cultivation area	0 ha	0 ha	3 ha
Estimated Sweet potatoes yield	- tonne(s)/ha	- tonne(s)/ha	1.0 tonne(s)/ha
Estimated Sweet potatoes	- tonne(s)	- tonne(s)	3 tonne(s)

Crops	2006	2007	2008
production			
Sesame cultivation area	0 ha	0 ha	3 ha
Estimated Sesame yield	- tonne(s)/ha	- tonne(s)/ha	1.0 tonne(s)/ha
Estimated Sesame production	- tonne(s)	- tonne(s)	3 tonne(s)

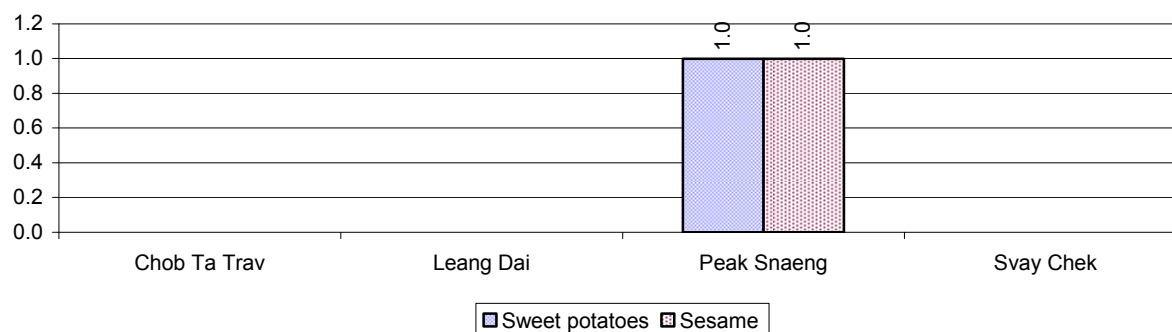
### 2.5.18 Yields of Corn, Soya beans and Mungbeans in tonne(s)/ha, by Commune, in 2008



### 2.5.19 Yields of Peanuts and Cassava in tonne(s)/ha by Commune, in 2008



### 2.5.20 Yields of Sweet Potatoes and Sesame in tonne(s)/ha, by Commune, in 2008



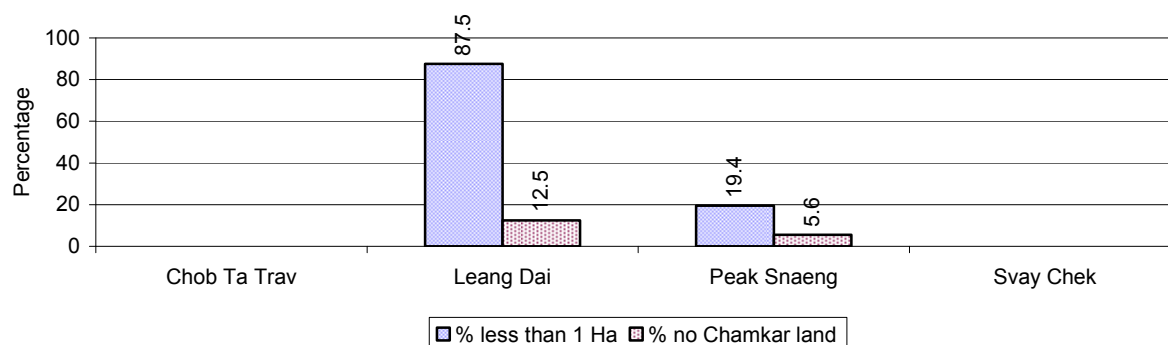
### 2.5.21 Percentage Farmers who own less than 1 Ha or no Chamkar land

Description	2006 %	2007 %	2008	
			%	Number
Families, who own less than 1ha of Chamkar land	100%	20%	32%	14 families
Families, with no Chamkar land	0%	0%	7%	3 families

**Note 1:** Calculated as a percentage of the total number of families whose main occupation is Chamkar (not rice) farming

**Note 2:** Chamkar land is no-rice land, i.e. other crops

### 2.5.22 Percentage Farmers owning less than 1 ha or no Chamkar land, by Commune, in 2008



**Note:** Percentage is calculated among families, who Chamkar farm as a main occupation, not the total population of the commune.

### 2.5.23 Percentage of Families raising Cattle/Buffalo, over 3 years

Description	2006 %	2007 %	2008	
			%	Number
Families raising cattle/buffalo	77%	71%	73%	3,324 families
Families raising cattle/buffalo as labor forces	38%	36%	38%	1,742 families

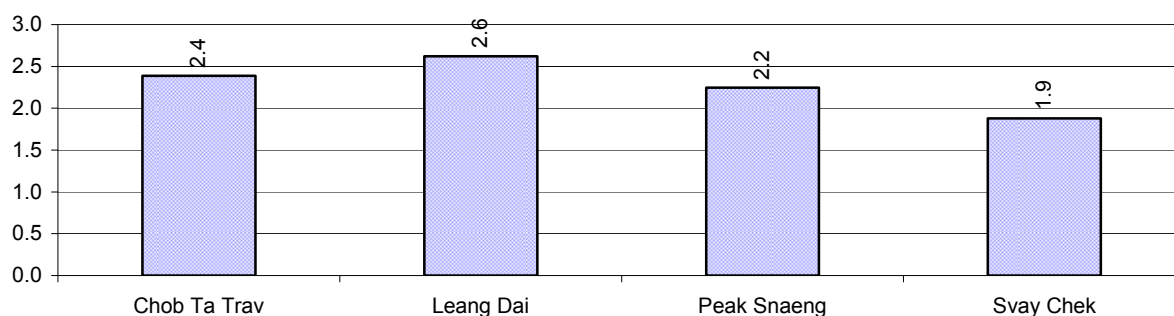
**Note:** Calculated against the total number of families.

### 2.5.24 Number of Cattle/buffalo being raised, over 3 years

Description	2006	2007	2008
Total number of cattle/buffalo	7,410 head(s)	6,567 head(s)	7,689 head(s)
Average cattle/buffalo per families	2.4 head(s)/families	2.2 head(s)/families	2 head(s)/families

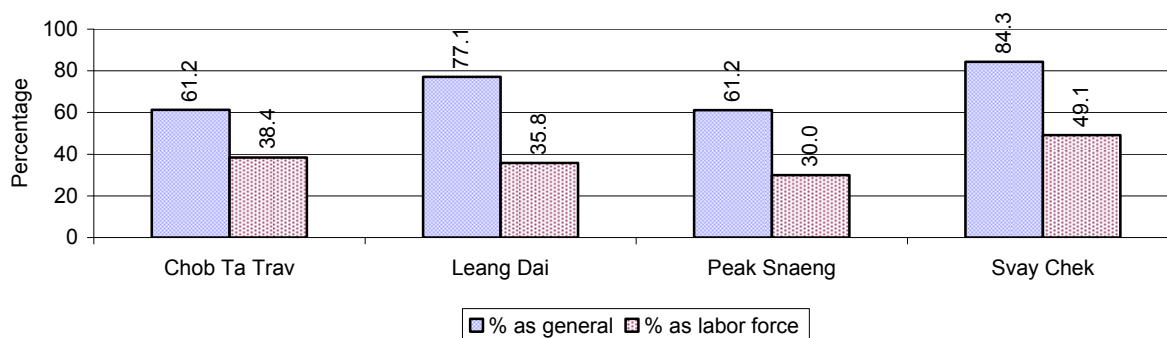
**Note:** Calculated by dividing total number of cattle/buffalo by total number of cattle/buffalo raising families

### 2.5.25 Average number of Cattle/Buffalo per Family, by Commune, in 2008



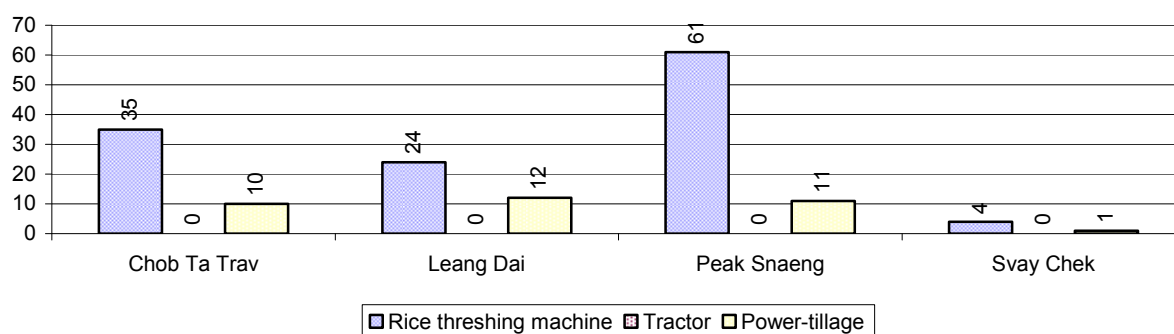
**Note:** Calculated by dividing total number of cattle/buffalo by total number of cattle/buffalo raising families

### 2.5.26 Percentage Families raising Cattle/Buffalo, for general and labor purposes in 2008, by Commune



**Note:** Calculated using the total number of families raising cattle/buffalo against the total number of families.

### 2.5.27 Type and number of agricultural Machines, by Commune, in 2008



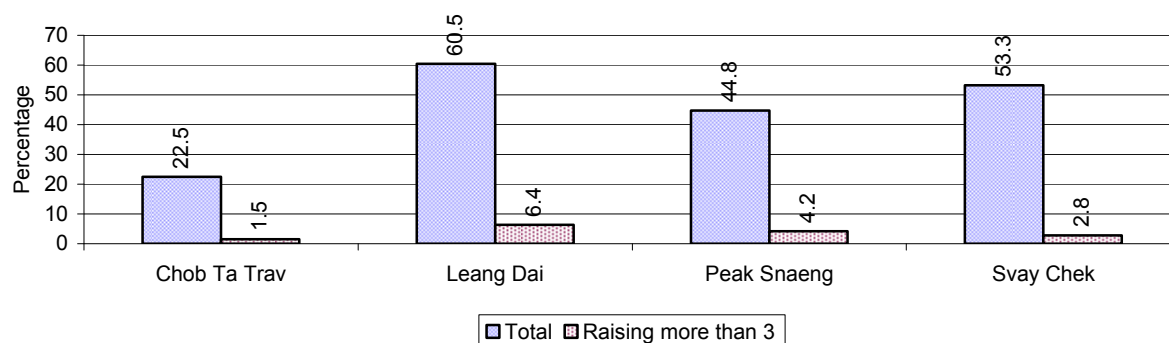


### 2.5.28 Livestock-producing Households over 3 years

Description	2006 %	2007 %	2008	
			%	Number
Total number of families raising pigs	62%	59%	49%	2,248 families
number of families raising more than 3 pigs	5%	4%	4%	194 families
Total number of families raising chickens	93%	88%	89%	4,056 families
number of families raising more than 3 chickens	67%	65%	65%	2,942 families
Total number of families raising ducks	10%	9%	10%	444 families
number of families raising more than 5 ducks	9%	8%	9%	407 families
Total number of families raising goats or sheep	0%	0%	0%	5 families
Total number of families raising horses	0%	0%	0%	1 families

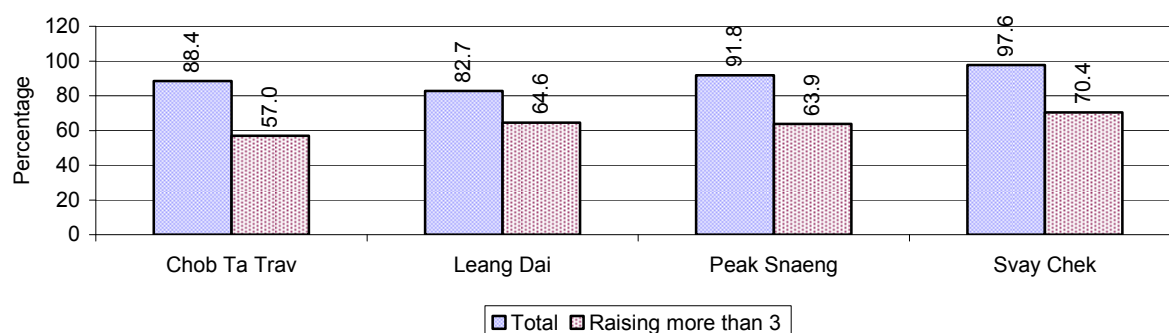
**Note:** Calculated against the total number of families

### 2.5.29 Percentage Families raising Pigs, by Commune, in 2008



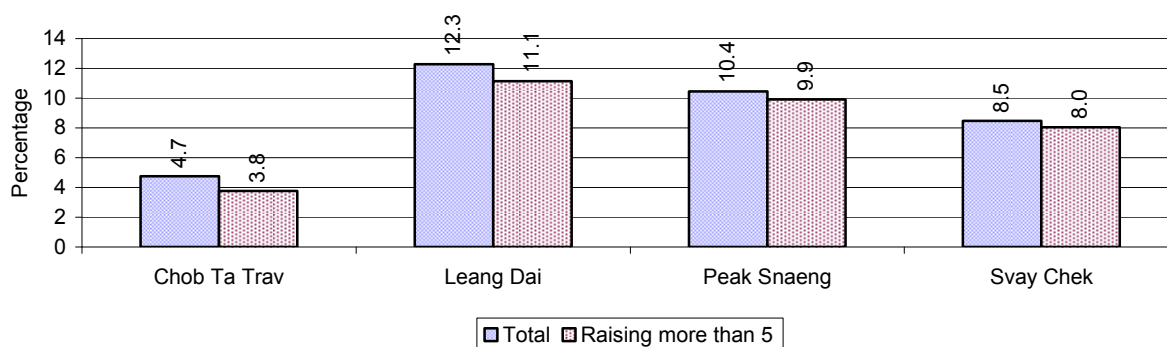
**Note:** Calculated against the total number of families in the commune

### 2.5.30 Percentage Families raising Chickens, by Commune, in 2008



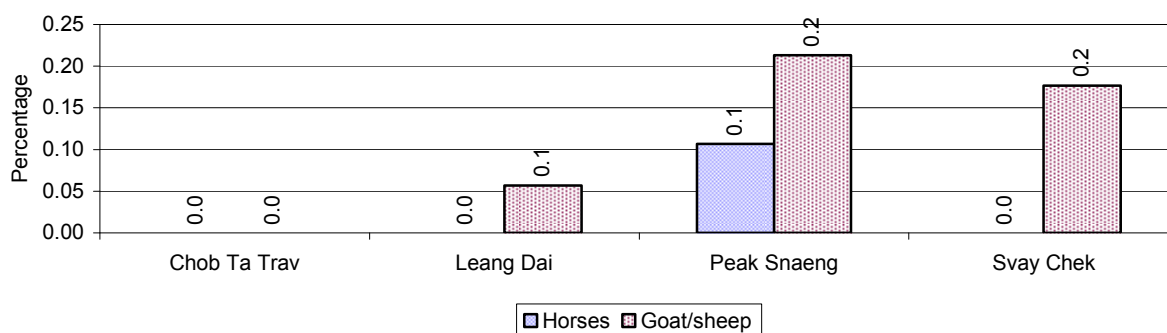
**Note:** Calculated against the total number of families in the commune

### 2.5.31 Percentage Families raising Ducks, by Commune, in 2008



**Note:** Calculated against the total number of families in the commune

### 2.5.32 Percentage Families raising Horses, Goats or Sheep, by Commune, in 2008



**Note:** Calculated against the total number of families in the commune

### 2.5.33 Livestock Farms over 3 years

Description	2006	2007	2008
Number of cattle/buffalo farms	0 farm(s)	0 farm(s)	0 farm(s)
Number of pig farms	1 farm(s)	0 farm(s)	0 farm(s)
Number of goat/sheep farms	0 farm(s)	0 farm(s)	0 farm(s)
Number of chicken farms	0 farm(s)	0 farm(s)	0 farm(s)
Number of duck farms	0 farm(s)	0 farm(s)	0 farm(s)

### 2.5.34 Number Livestock Farms, by Commune in 2008

There were no farms of this type in this District in 2008

**Note:** Number of farms are recorded by the village chief, not by counting number of livestock in each farm

### 2.5.35 Number Chicken and Duck Farms, by Commune, for 2008

There were no farms of this type in this District in 2008

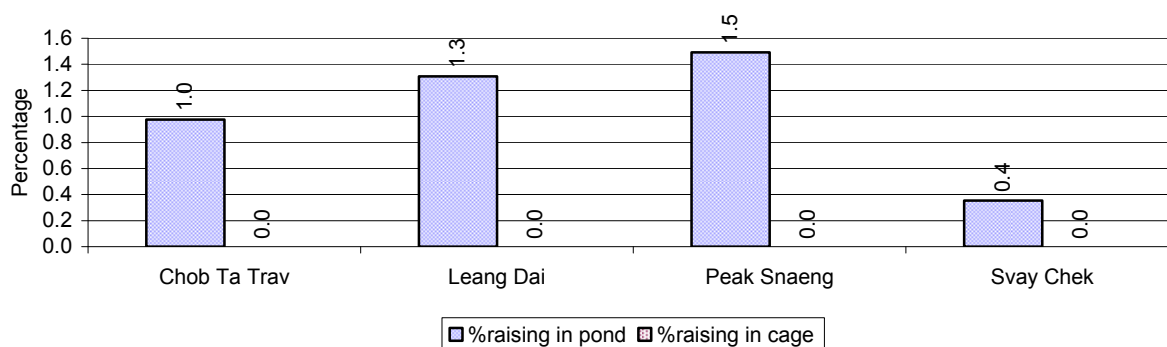
**Note:** Number of farm places recorded by village chief, not by counting number of livestock in each farm

### 2.5.36 Families raising Fish over 3 years

Description	2006	2007	2008
Total number of families raising fish	21 families	7 families	48 families
% families raising fish	1%	0%	1%
Number families raising fish in pond	21 families	7 families	48 families
% families raising fish in pond	1%	0%	1%
Number fish pond	21 pond(s)	7 pond(s)	51 pond(s)
No. of ponds per family	1.0 pond/families	1.0 pond/families	1.1 pond/families
Number of families raising fish in cage	0 families	0 families	0 families
%families raising fish in cage	0 %	0 %	0%
Number of fish cage	0 cage(s)	0 cage(s)	0 cage(s)
No. of fish cage per family	- cage /families	- cage /families	- cage /families

**Note:** % of families raising fish or fish in ponds or cages is calculated a percentage of the total number of families.

### 2.5.37 Percentage of Families raising Fish, by Commune, in 2008



**Note:** Calculated as a percentage of the total number of families in the commune.

### 2.5.38 Shrimp and Prawn Farming over 3 years

Description	2006	2007	2008
Number of families raising shrimps	0 families	0 families	0 families
% Families raising shrimps	0%	0%	0%
Number of shrimp ponds	0 pond	0 pond	0 pond
Total area raising shrimps	0 ha	0 ha	0 ha
Area per family	-ha/families	-ha/families	-ha/families
Number of families raising prawns	0 families	0 families	0 families
% families raising prawns	0%	0%	0%
Number prawn ponds	0 pond	0 pond	0 pond
Ponds per families	- pond/families	-pond/families	-pond/families
Number of prawn cages	0 cage	0 cage	0 cage
Cages per families	0 cage /families	0 cage /families	0 cage /families

**Note:** Percentage of families raising either prawns or shrimp is calculated against the number of families, who do aquaculture farming, NOT the total population.

### 2.5.39 Numbers of Families raising Shrimps and number of Shrimp Ponds, by Commune, in 2008

There were none of these in this District in 2008

### 2.5.40 Number of Families raising Prawn and Number of Prawn Ponds/Cages, by Commune, in 2008

There were none of these in this District in 2008

### 3 Social Aspects

#### 3.1 Education

##### 3.1.1 Kindergarten in the District over 3 years

Description	2006	2007	2008
Number of community kindergarten schools	6 school(s)	7 school(s)	13 school(s)
Number of community kindergarten class rooms	6 room(s)	4 room(s)	14 room(s)
Number of community kindergarten classes	6 class(es)	7 class(es)	17 class(es)
Number of community kindergarten teachers	12 person(s)	14 person(s)	20 person(s)
Number of women community kindergarten teachers	9 women	10 women	18 women
Number of state and private kindergarten schools	0 school(s)	0 school(s)	0 school(s)
Number of state and private kindergarten class rooms	0 room(s)	0 room(s)	0 room(s)
Number of state and private kindergarten classes	0 class(es)	0 class(es)	0 class(es)
Number of state and private kindergarten teachers	0 person(s)	0 person(s)	0 person(s)
Number of women state and private kindergarten teachers	0 women	0 women	0 women

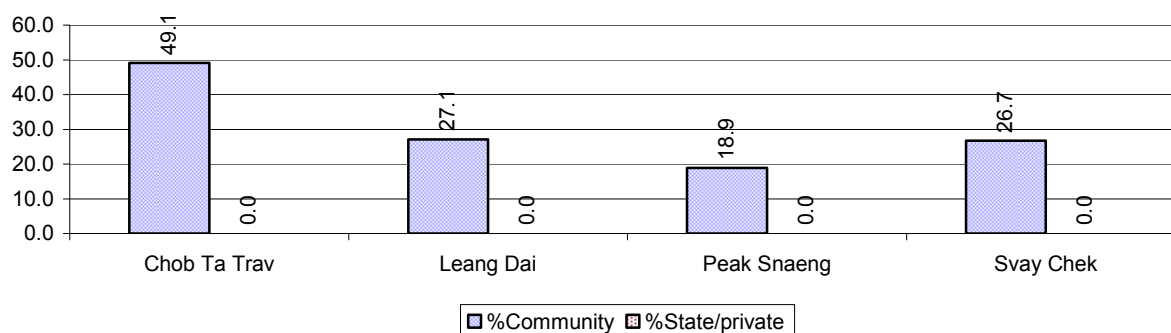
##### 3.1.2 Percentage enrolment at Kindergarten level over 3 years

*This table shows the percentage of the total 3-5 year old population attending kindergarten.*

Description	2006 %	2007 %	2008	
			%	Number
Total percentage of children, 3-5 yrs, go to kindergarten	19%	20%	30%	616 person(s)
Percentage of children, 3-5 yrs, go community kindergarten	19%	20%	30%	616 person(s)
Percentage children, 3-5 yrs, go state/private kindergarten	0%	0%	0%	0 person(s)

**Note:** Calculated against the total for that age group

##### 3.1.3 Percentage of Children 3-5 yrs attending Kindergarten, by Commune, in 2008



### 3.1.4 Basic Education over 3 years

#### Primary School

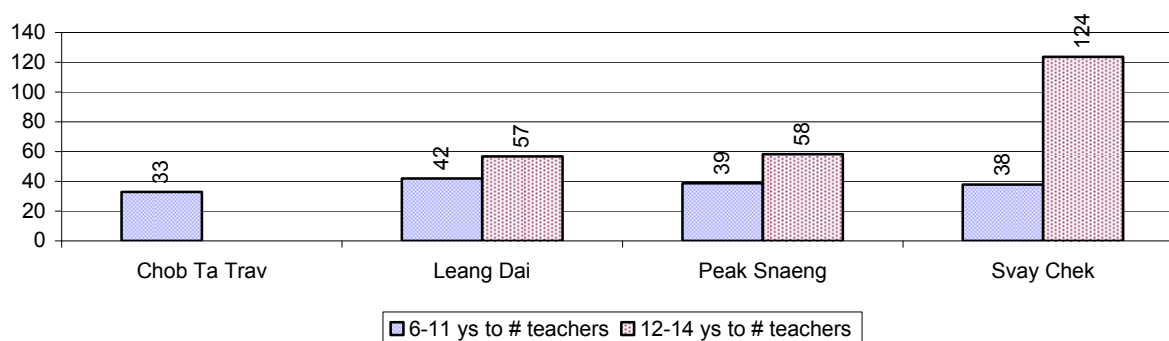
Description	2006	2007	2008
Number of primary schools	15 school(s)	19 school(s)	20 school(s)
Number of primary school rooms	85 room(s)	89 room(s)	91 room(s)
Number of primary classes	110 class(es)	121 class(es)	134 class(es)
Number of primary teachers	70 person(s)	96 person(s)	107 person(s)
Ratio of children 6-11 yrs to school	262	210	206
Ratio of children 6-11 yrs to school room	46	45	45
Ratio of children 6-11 yrs to class	36	33	31
Ratio of children 6-11 yrs to teacher	56	42	39

**Note:** According to education norm, children 6-11 yrs should attend primary school, while 12-14 yrs should be in lower secondary school, but in reality this varies.

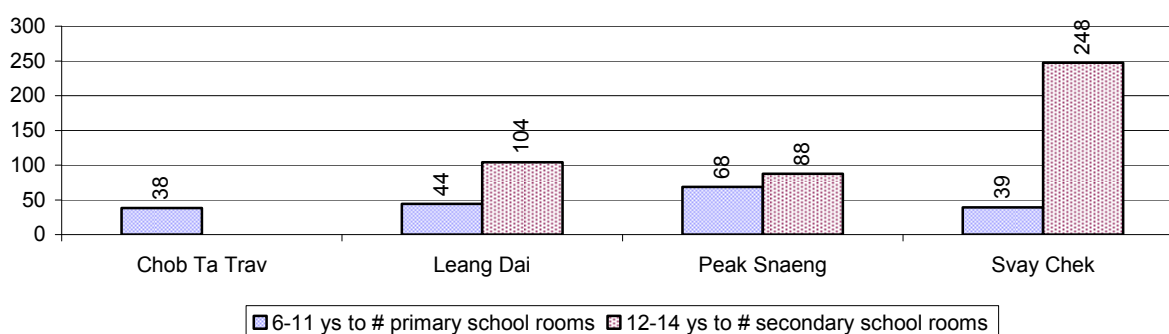
#### Lower Secondary School

Description	2006	2007	2008
Number of lower secondary schools	1 school(s)	3 school(s)	3 school(s)
Number of lower secondary school rooms	10 room(s)	14 room(s)	12 room(s)
Number of lower secondary classes	18 class(es)	12 class(es)	26 class(es)
Number of lower secondary teachers	10 person(s)	18 person(s)	21 person(s)
Ratio children 12-14 yrs to school	1,671	536	581
Ratio of children 12-14 yrs to school room	167	115	145
Ratio of children 12-14 yrs to class	93	134	67
Ratio of children 12-14 yrs to teacher	167	89	83

### 3.1.5 Ratio of 6-11 year old and 12-14 year old Children to number of Teachers, by Commune, in 2008



### 3.1.6 Ratio of 6-11 year old and 12-14 year old Children to number of School Rooms, by Commune, in 2008



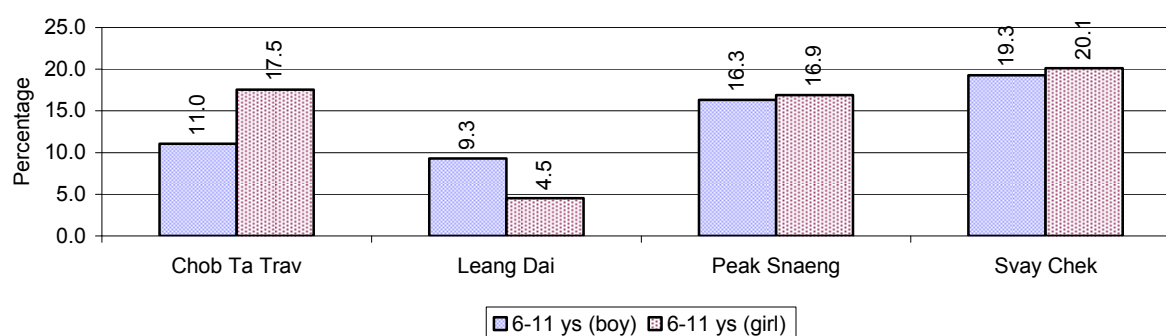
### 3.1.7 Enrolment status at Primary Level over 3 years

Description	2006 %	2007 %	2008	
			%	Number
Total children aged 6-11 years old	18%	18%	17%	4,120 person(s)
Total children aged 6-11 who are in school	80%	85%	87%	3,571 person(s)
Total children aged 6-11 who are not in school	20%	15%	13%	549 person(s)
Total girls aged 6-11 years old	18%	18%	17%	2,142 person(s)
Total girls aged 6-11 who are in school	78%	85%	87%	1,859 person(s)
Total girls aged 6-11 who are not in school	22%	15%	13%	283 person(s)
Total boys aged 6-11 years old	18%	17%	17%	1,978 person(s)
Total boys aged 6-11 who are in school	83%	85%	87%	1,712 person(s)
Total boys aged 6-11 who are not in school	17%	15%	13%	266 person(s)

**Note 1:** Percentage is calculated on the basis of the total number of children within 6-11 year age group for the first 3 rows and for the total girls and the total boys aged 6-11 yrs.

**Note 2:** Number of girls aged 6-11 who are in & not in school is calculated against the total number of girls aged 6-11 yrs. Number boys, 6-11 yrs who are in & not in school are calculated against the total number of boys aged 6-11 yrs.

### 3.1.8 Percentage of 6-11 year old Children not in School, by Commune, in 2008



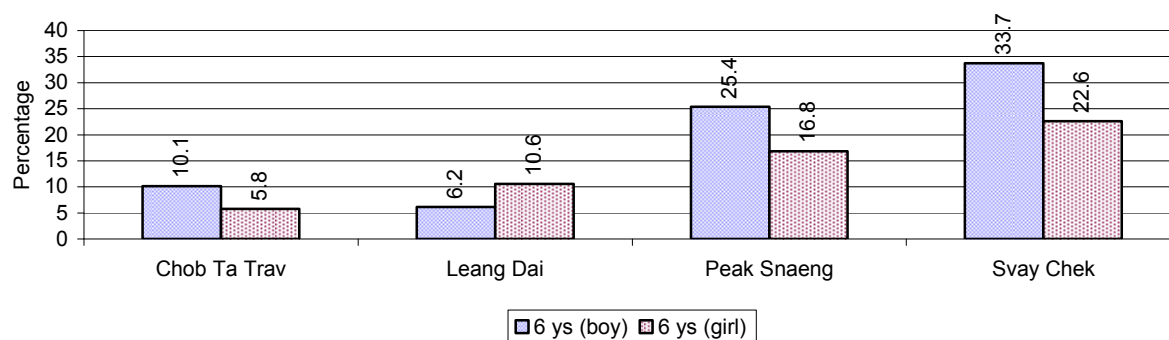
**Note:** calculated on the basis of the total number of children within 6-11 year age group in the commune.

### 3.1.9 Enrolment of 6 year old Children over 3 years

Description	2006 %	2007 %	2008	
			%	Number
Total % and number of children aged 6 years old	3%	3%	3%	762 person(s)
Total % of children aged 6 years old in school	67%	63%	77%	584 person(s)
Total % of children aged 6 years old not in school	33%	37%	23%	178 person(s)

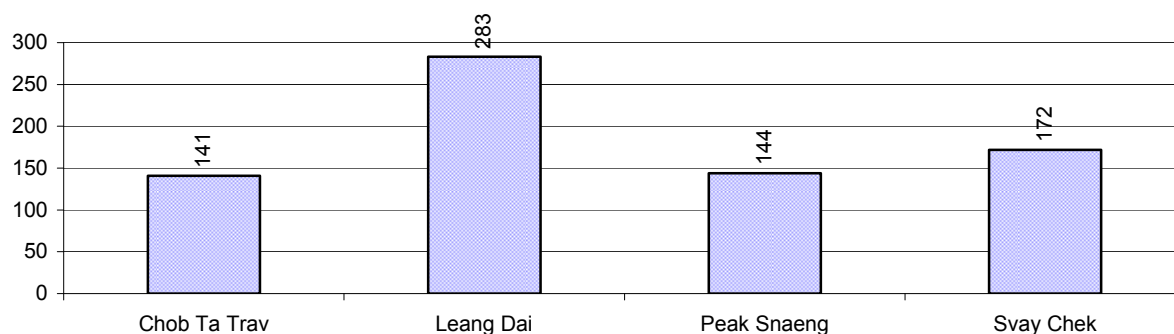
**Note:** First row calculated as a percentage of total population. Second and third row calculated as a percentage of the total number of 6 year olds.

### 3.1.10 Percentage of 6 year old Children not in School, by Commune, in 2008



**Note:** Calculated as a percentage of total 6 year old population

### 3.1.11 Number of 5 year old Children in each Commune in 2008

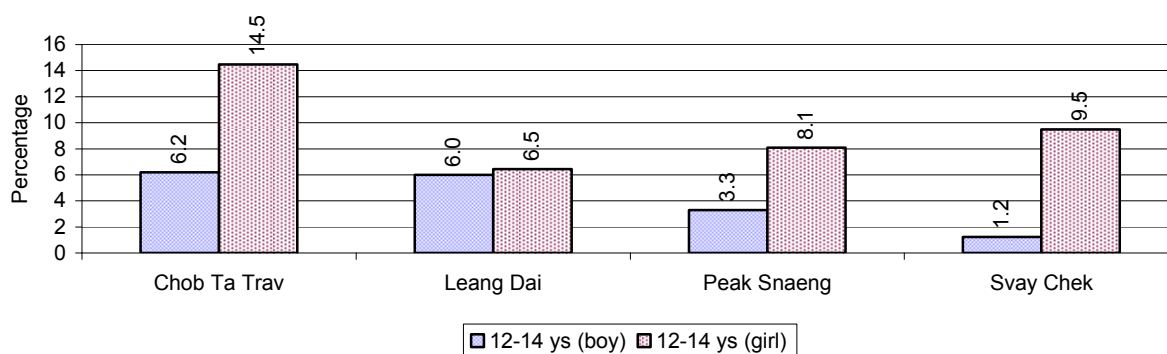


### 3.1.12 Enrolment at Lower Secondary Level over 3 years

Description	2006 %	2007 %	2008	
			%	Number
Total <b>children</b> aged 12-14 years old	8%	7%	7%	1,743 person(s)
Children aged 12-14 years old in school	90%	95%	93%	1,627 person(s)
Children aged 12-14 years old not in school	10%	5%	7%	116 person(s)
Total <b>girls</b> aged 12-14 years old	8%	7%	8%	937 person(s)
Girls aged 12-14 years old in school	87%	94%	91%	854 person(s)
Girls aged 12-14 years old not in school	13%	6%	9%	83 person(s)
Total <b>boys</b> aged 12-14 years old	8%	7%	7%	806 person(s)
Boys aged 12-14 years old in school	92%	96%	96%	773 person(s)
Boys aged 12-14 years old not in school	8%	4%	4%	33 person(s)

**Note:** Percentage is calculated on the basis of number of the total number of children within 12-14 yrs group, except for the first row of each section which is calculated on the basis of the total population.

### 3.1.13 Percentage of 12-14 year olds not in School, by Commune, in 2008



**Note:** Calculated as a percentage of the total 12-14 year old population in each commune

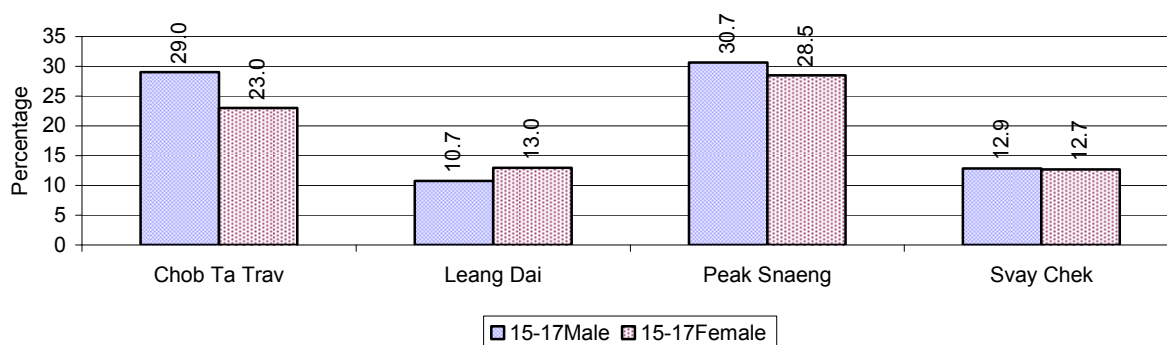
### 3.1.14 Upper Secondary Schools over 3 years

Description	2006	2007	2008
Number of upper secondary schools	0 school(s)	0 school(s)	1 school(s)
Number of upper secondary school rooms	0 room(s)	0 room(s)	2 room(s)
Number of upper secondary classes	0 class(es)	0 class(es)	2 class(es)
Number of upper secondary teachers	0 person(s)	0 person(s)	4 person(s)
Ratio of 15-17 yr olds to number of school	N/A	N/A	1,690
Ratio of 15-17 yr olds to number of school room	N/A	N/A	845
Ratio of 15-17 yr olds to number of classes	N/A	N/A	845
Ratio of 15-17 yr olds to number of teacher	N/A	N/A	423

### 3.1.15 Enrolment of 15-17 year old teenagers over 3 years

Description	2006	2007	2008
Number of teenage, 15-17 years old	1,564 person(s)	1,538 person(s)	1,690 person(s)
Number of teenage, 15-17 years old, who are not studying	383 person(s)	288 person(s)	299 person(s)
Percentage of teenage, 15-17 years old not studying	24%	19%	18%

### 3.1.16 Percentage of 15-17 year old Teenagers not at School, by Commune, in 2008

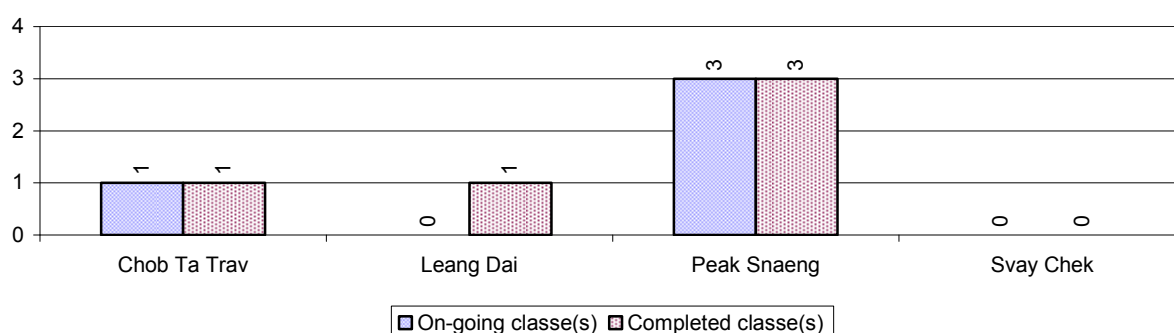




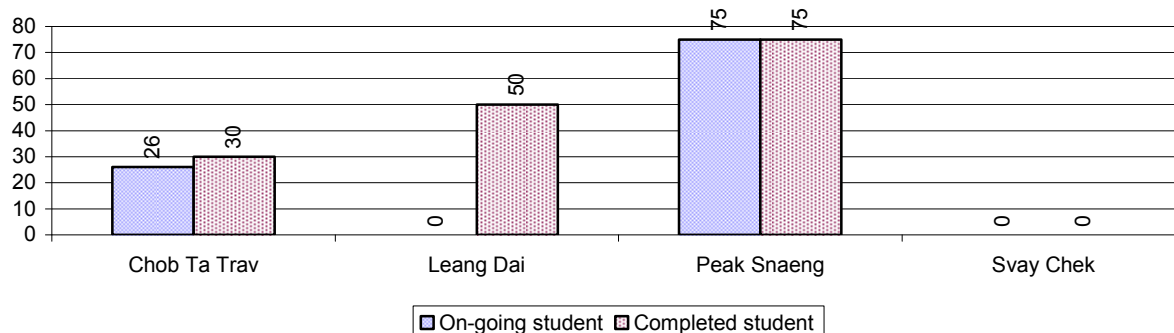
### 3.1.17 Literacy Classes as of 2008

Literacy classes	Organized by:		Other Program(s)	Total
	PDoEYS	NGOs		
Number of On-going literacy classes	3 class(es)	1 class(es)	0 class(es)	4 class(es)
Number of literacy students in on-going classes	76 person(s)	25 person(s)	0 person(s)	101 person(s)
Completed literacy class(es)	4 classes	1 classes	0 classes	5 classes
Number of literacy students that have completed literacy classes	130 person(s)	25 person(s)	0 person(s)	155 person(s)
Number of students that passed	121 person(s)	25 person(s)	0 person(s)	146 person(s)

### 3.1.18 Number of on-going and completed Literacy Classes, by Commune, in 2008



### 3.1.19 Students of on-going & completed Literacy Classes, by Commune, in 2008

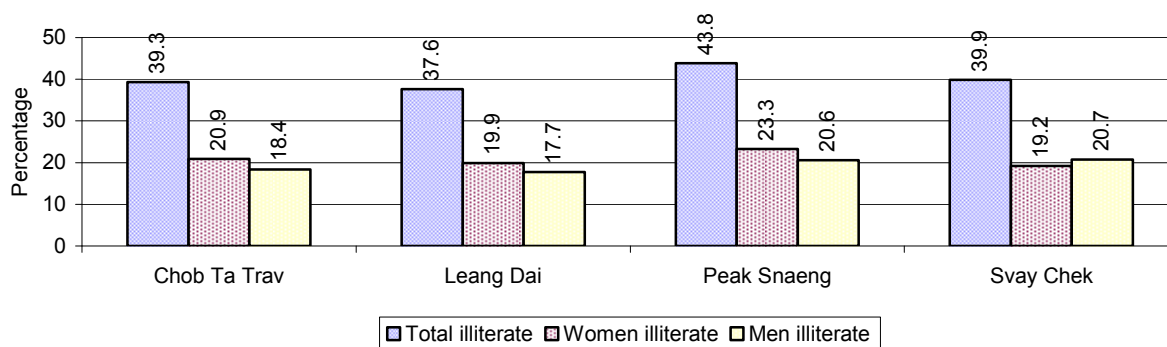


### 3.1.20 Percentage of illiterate People between 15-60, over 3 years

Illiteracy Status	2006 %	2007 %	2008	
			%	Number
Illiterate people, 15-60 years old	46%	43%	40%	5,251 person(s)
Illiterate females, 15-60 years old	24%	22%	21%	2,715 person(s)
Illiterate people, 15-17 years old	4%	2%	4%	66 person(s)
Illiterate females, 15-17 years old	2%	0%	2%	35 person(s)
Illiterate people, 18-24 years old	31%	27%	27%	832 person(s)
Illiterate females, 18-24 years old	14%	13%	13%	410 person(s)
Illiterate people, 25-60 years old	60%	56%	52%	4,353 person(s)
Illiterate females, 25-60 years old	32%	29%	27%	2,270 person(s)

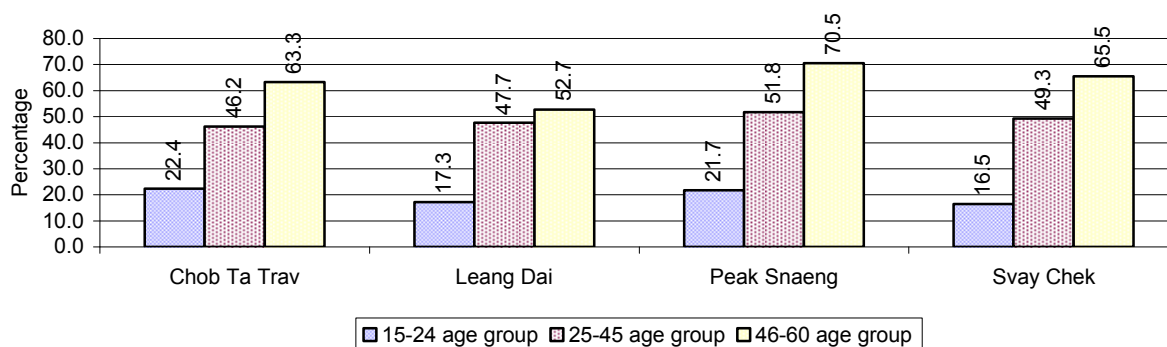
**Note:** Percentage is calculated on the basis of number of people in age group.

### 3.1.21 Percentage illiterate People among 15-60 yrs old, by Commune, in 2008



**Note:** Percentages are calculated on the basis of number of people in that age group.

### 3.1.22 Percentage illiterate People for 15-24 yrs, 25-45 yrs and 46-60 yrs, by Commune, in 2008



**Note:** Percentage of illiterate people in each age group is calculated on the basis of number of people in that age group.

## 3.2 Health

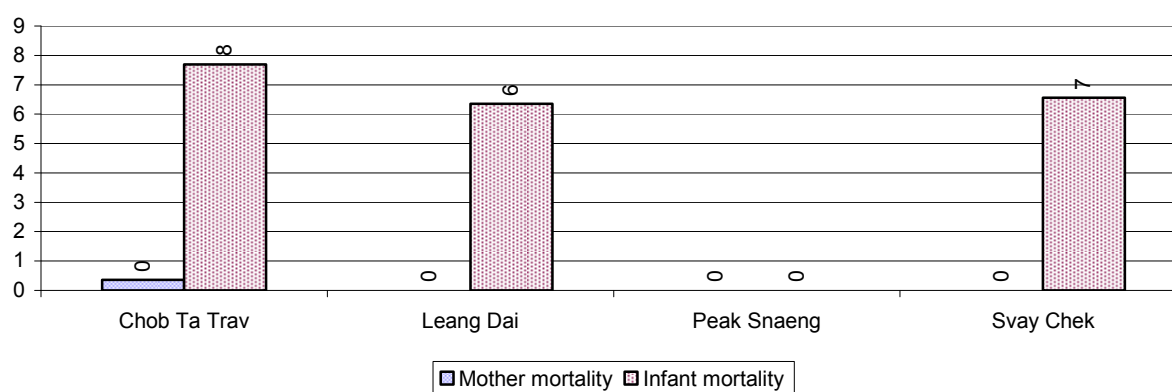
### 3.2.1 Health Situation of Women and Children, over 3 years

Description	2006	2007	2008
Number families with a birth during the year	501 families	473 families	472 families
Number of women who had their baby delivered by a TBA	379 person(s)	344 person(s)	245 person(s)
Percentage of women who had their baby delivered by a TBA	76 %	73 %	52 %
Number of women who had their baby delivered by a midwife	122 person(s)	129 person(s)	227 person(s)
Percentage of women had their baby delivered by a midwife	24 %	27 %	48 %
Number of mothers who died within 1 month of giving birth	3 person(s)	1 person(s)	2 person(s)
Mothers who died within 1 month of giving birth per 100,000 families having a delivery	599	211	424
Number of infants born during the year	501 person(s)	473 person(s)	472 person(s)
Number of Infants who died within 1 month	8 person(s)	5 person(s)	11 person(s)

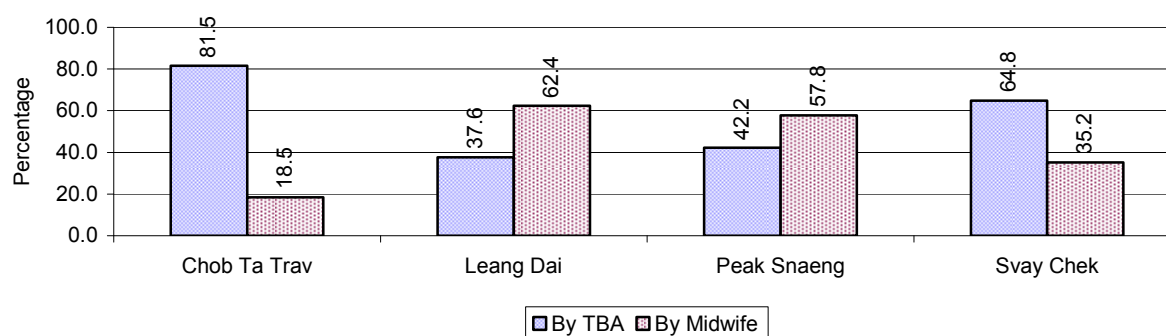
Description	2006	2007	2008
Infants mortality within 1 month per 1,000 births	16	11	23
Number of children who died below the age of 5.	11 person(s)	7 person(s)	12 person(s)
Number of infants, aged 9-12 months, born during the year	184 person(s)	204 person(s)	203 person(s)
Nr. infants, aged 9-12 months, not receiving full immunization	15 person(s)	0 person(s)	16 person(s)
% of 9-12 months infants, not receiving full immunization	8 %	0 %	8 %

**Note:** TBA = Traditional Birth Attendant

### 3.2.2 Mothers dying within 0 days to 1 month of giving Birth and Infants dying within 1 month in 2008, by Commune

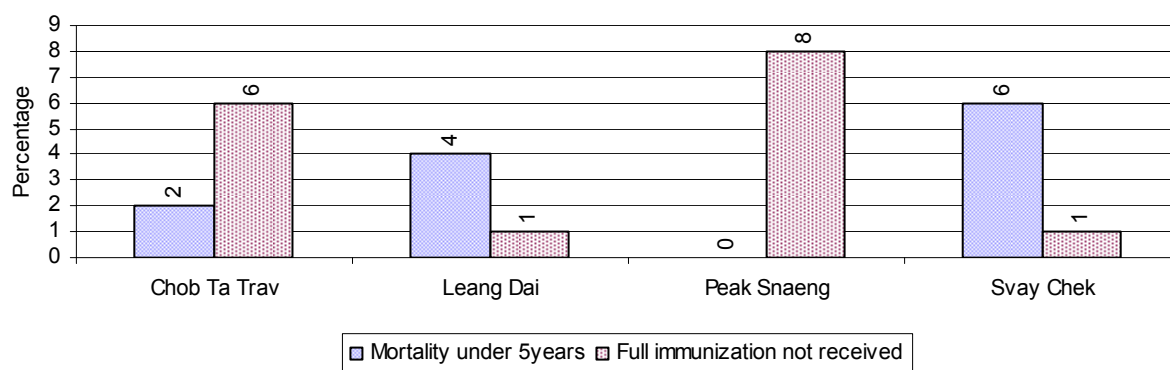


### 3.2.3 Percentage of Women delivering with a TBA or Midwife, by Commune



**Note:** Calculated as a percentage of total deliveries

### 3.2.4 Percentage of Children dying below 5 & of 9-12 months not receiving full Immunization, by Commune, in 2008



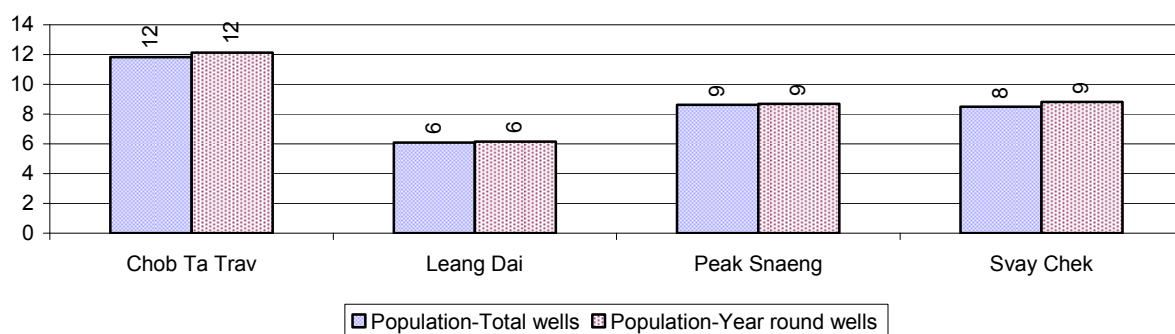
**Note:** Mortality rate calculated as a percentage of the total 5 year old population. Lack of immunization received calculated as a percentage of the total number 9-12 months olds there are

## 3.3 Water and Sanitation

### 3.3.1 Number of different types of Wells over 3 years

Type of wells	Number of wells by year		
	2006	2007	2008
<i>Total number of pumped or mixed wells</i>	1,389	1,909	2,586
Year-round usable pumped or mixed wells	1,368	1,902	2,556
Dry season unusable pump or mixed wells	21	7	30
Pump or mixed wells needing repair/rehabilitation	80	58	120
<i>Total number of ring wells</i>	472	502	510
Year-round usable ring wells	444	476	488
Dry season unusable ring wells	28	26	22
Ring wells needing repair/rehabilitation	33	30	44
<i>Total number of unprotected dug wells</i>	692	208	129
Year-round usable unprotected dug wells	566	195	125
Dry season unusable unprotected dug wells	126	13	4

### 3.3.2 Ratio of People to Wells, by Commune, in 2008



**Note:** Year-round wells excluding unprotected wells

### 3.3.3 Potable Ponds over 3 years

Type of Pond	2006	2007	2008
Total number of normal-type ponds	0 pond	0 pond	0 pond
Year-round usable normal-type ponds	0 pond	0 pond	0 pond
Dry season unusable normal-type ponds	0 pond	0 pond	0 pond
Normal-type ponds needing repair/rehabilitation	0 pond	0 pond	0 pond
Total number of filter ponds	0 pond	0 pond	0 pond
Year-round usable filter ponds	0 pond	0 pond	0 pond
Filter ponds, dry season unusable	0 pond	0 pond	0 pond
Filter ponds needing repair/rehabilitate	0 pond	0 pond	0 pond

### 3.3.4 Ratio of People to normal Ponds, by Commune in 2008

There were no normal ponds in this District in 2008

### 3.3.5 Ratio of People to Filter Ponds, by Commune, in 2008

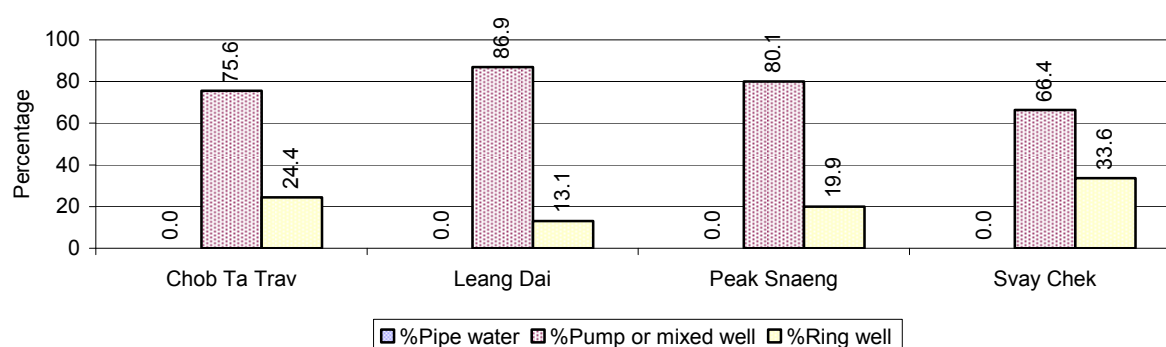
There were no filter ponds in this District in 2008

### 3.3.6 Source of potable Water for Households, over 3 years

Water sources	2006 %	2007 %	2008	
			%	Number
Families using water from purification system	0%	0 %	0 %	0 families
Families using water from pump, mixed wells	55%	67 %	79 %	3,574 families
Families using water from ring wells and open dug wells	45%	33 %	21 %	973 families
Families using water from pond	0%	0 %	0 %	0 families
Families using water from rain water storage	0%	0 %	0 %	0 families
Families using water from rivers, lakes, natural ponds and reservoirs	0%	0 %	0 %	0 families

**Note:** Calculated as a percentage of the total number of families.

### 3.3.7 Percentage Families using different Water Sources, by Commune, in 2008



**Note:** Calculated as a percentage of the total number of families in each commune

### 3.3.8 Percentage Families using Water from Rain Water Storage, Ponds and natural Sources (rivers/lakes/natural ponds/reservoirs), by Commune, 2008

There were no Families using Water from Rain Water Storage, Ponds and natural Sources (rivers/lakes/natural ponds/reservoirs) in this District in 2008

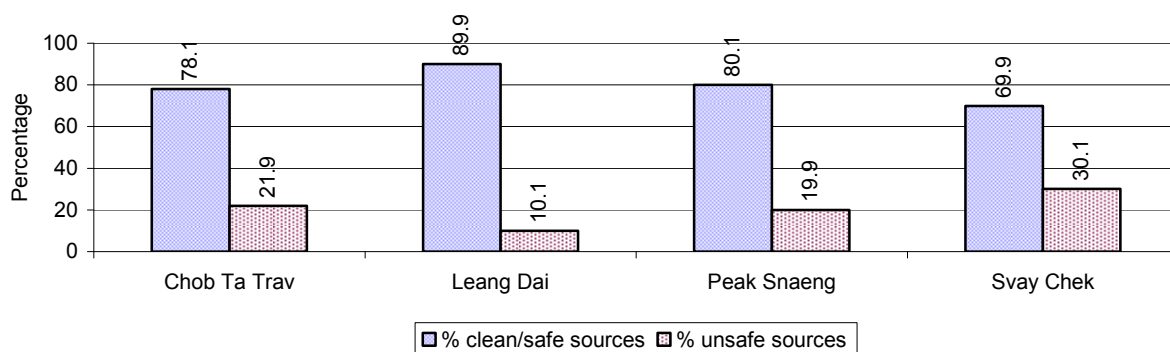
**Note:** Calculated as a percentage of the total number of families in each commune

### 3.3.9 Drinking Water Sources in the dry Season over 3 years

Percentage Families that get drinking water from:	2006 %	2007 %	2008	
			%	Number
from clean/safe sources	78 %	69 %	81 %	3,685 families
from unsafe sources	22 %	31 %	19 %	862 families

**Note:** Calculated as a percentage of the total number of families.

### 3.3.10 Percentage Families using safe and unsafe Water Sources in the dry Season, by Commune, in 2008



**Note:** Calculated as a percentage of the total number of families in each commune.

### 3.3.11 Drinking Water Purification by Households, over 3 years

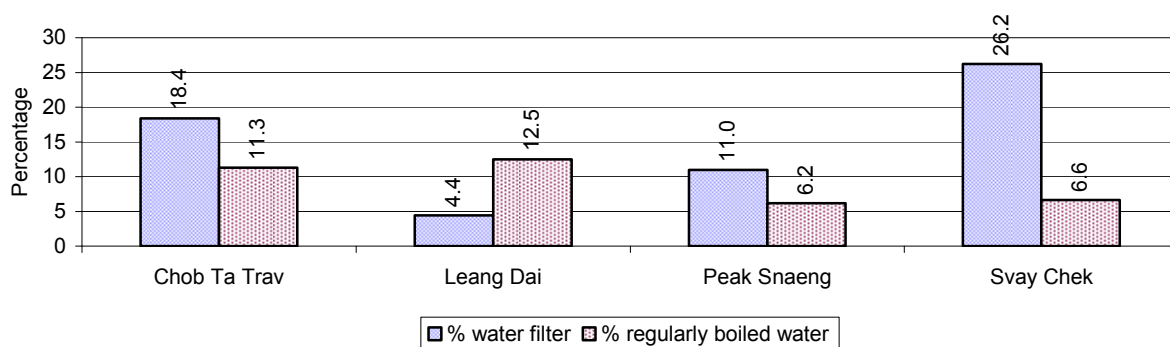
*This table shows the different ways families make water safe for drinking.*

Families, who:	2006 %	2007 %	2008	
			%	Number
Filter water for drinking	1%	7%	13 %	610 families
Boil water for drinking	4%	8%	10 %	434 families

**Note:** Calculated as a percentage of the total number of families

### 3.3.12 Percentage Families filtering Water or regularly boiling Water, by Commune, in 2008

*This graph shows the different ways families make drinking water safe.*



**Note:** Calculated on as a percentage of the total number of families in each commune.

### 3.3.13 Families' access to Water, over 3 years

Families access to water	2006 %	2007 %	2008	
			%	Number
Families with water at home or in less then 150m	81%	98%	100 %	4,542 families
Families with water 150m or more away from home	6%	2%	0 %	5 families

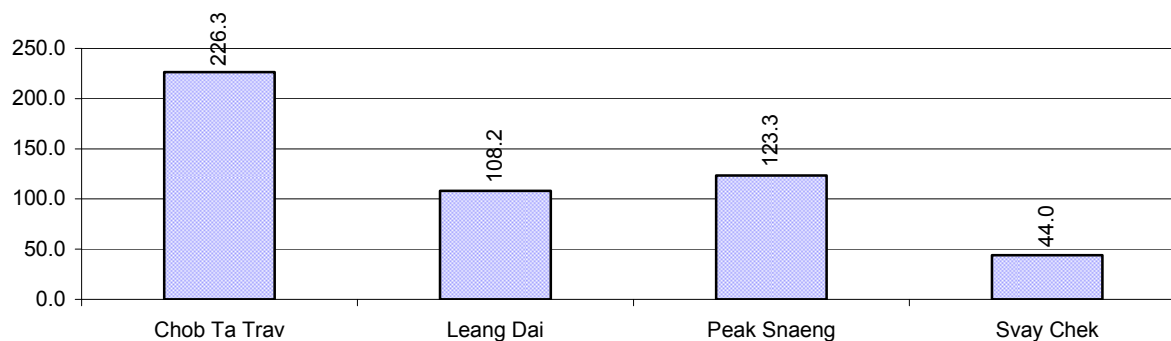
**Note:** Calculated as a percentage of the total number of families

### 3.3.14 Ratio of people to Latrines over 3 years

Description	2006 Ratio	2007 Ratio	2008	
			Ratio	Number
Ratio of people to latrines	342.7	233.6	85.5	279.0

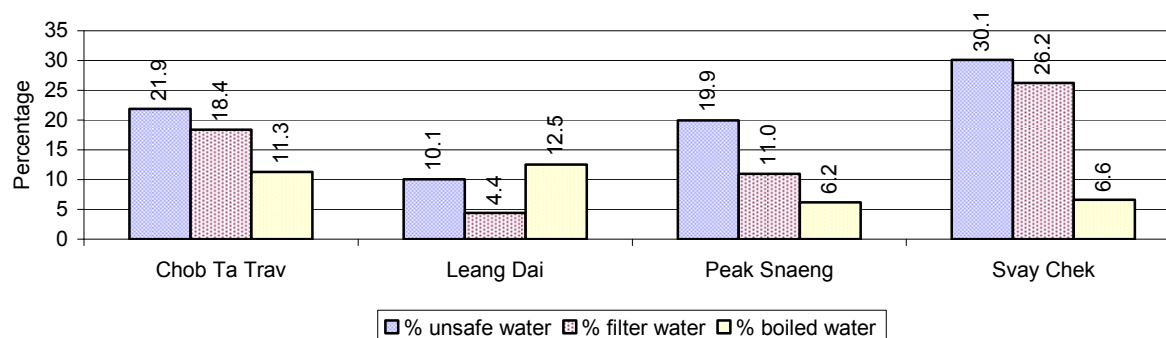
**Note:** Ratio calculated by dividing the number of houses with latrines by the total population

### 3.3.15 Ratio of People to Latrines, by Commune, in 2008



**Note:** Ratio calculated by dividing the number of houses with latrines by the total population in a Commune.

### 3.3.16 Percentage of Families drinking boiled, filtered or unsafe Water, by Commune, in 2008



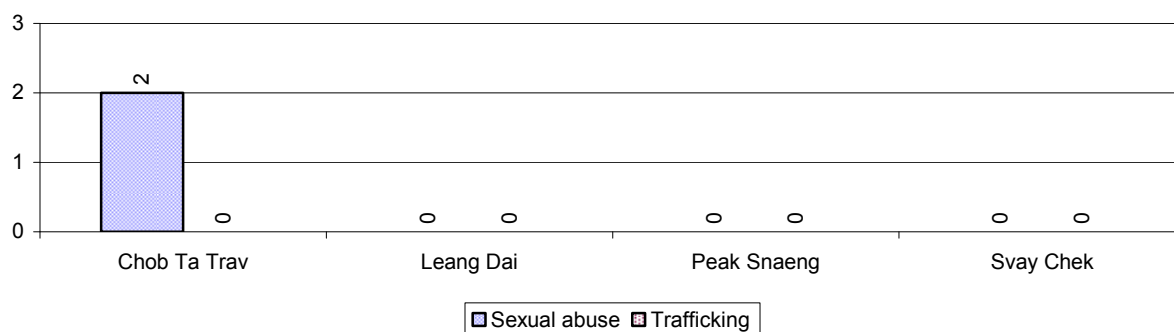
**Note:** Calculated as a percentage of the total number of families in each commune.

## 3.4 Vulnerable groups

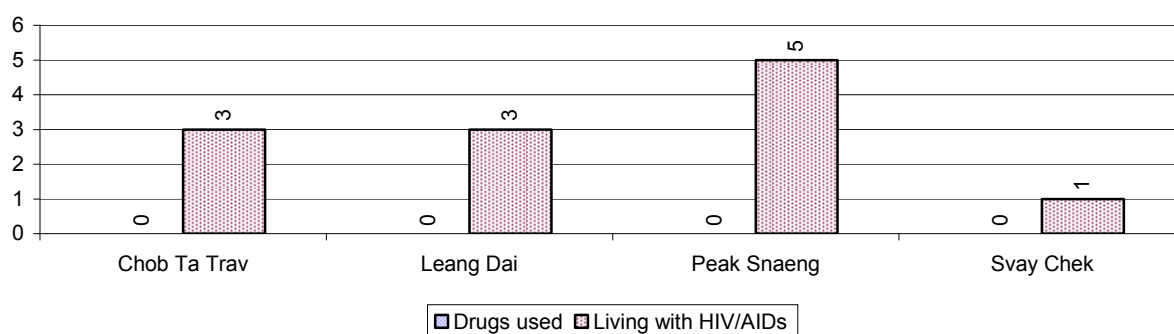
### 3.4.1 Vulnerable Groups in need of special Protection over 3 years

Vulnerable groups	2006	2007	2008
Victims of sexual abuse	0 person(s)	3 person(s)	2 person(s)
Victims of human trafficking	0 person(s)	0 person(s)	0 person(s)
Families with family member(s) using drugs	0 families	0 families	0 families
Families with family member(s) living with HIV/AIDS	13 families	11 families	12 families
Children under 18 yrs old whose parent died of AIDS	2 person(s)	3 person(s)	6 person(s)
Orphaned/abandoned children under 18 yrs old (all cases)	121 person(s)	104 person(s)	112 person(s)
Elderly persons without guardian	33 person(s)	9 person(s)	30 person(s)
Disabled people able to earn an income	128 person(s)	109 person(s)	52 person(s)
Disabled people unable to earn an income	39 person(s)	42 person(s)	47 person(s)
Disabled people under 18 yrs old	28 person(s)	17 person(s)	9 person(s)
Victims of natural disasters	60 families	1 families	6 families
Victims of land mines and unexploded weapons	1 person(s)	0 person(s)	0 person(s)

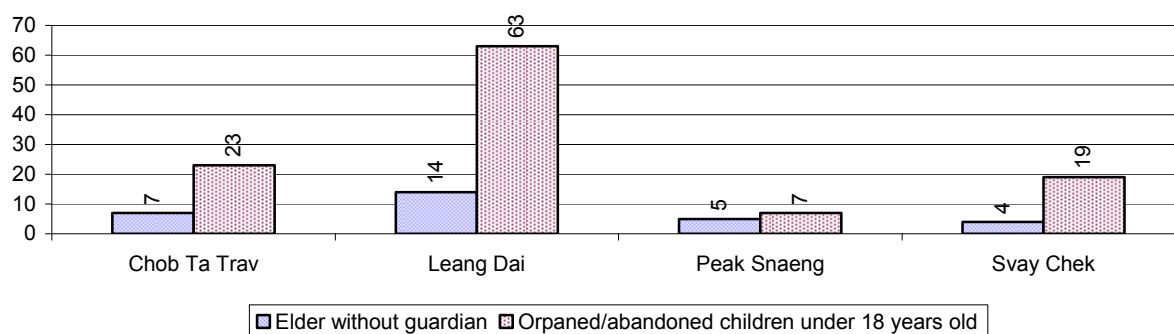
### 3.4.2 Registered Victims of sexual Abuse or Trafficking, by Commune, for 2008



### 3.4.3 Registered Families with Member(s) using Drugs or living with HIV/AIDS, by Commune, for 2008

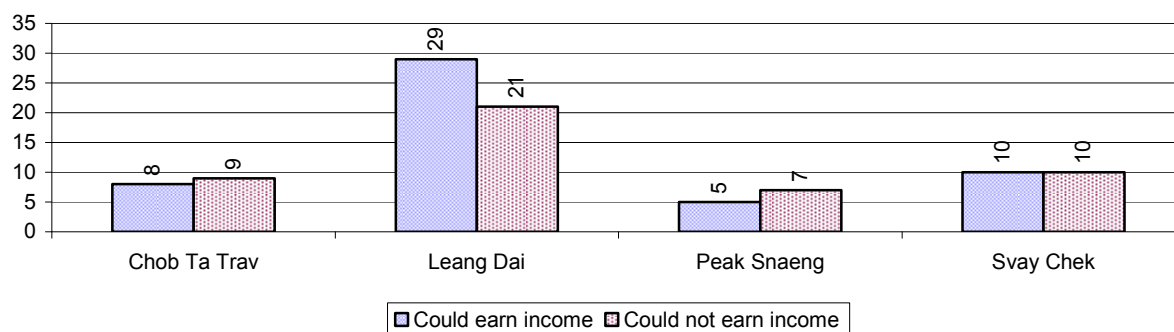


### 3.4.4 Elderly Persons without a Guardian and orphaned/abandoned Children under 18 years old, by Commune, for 2008

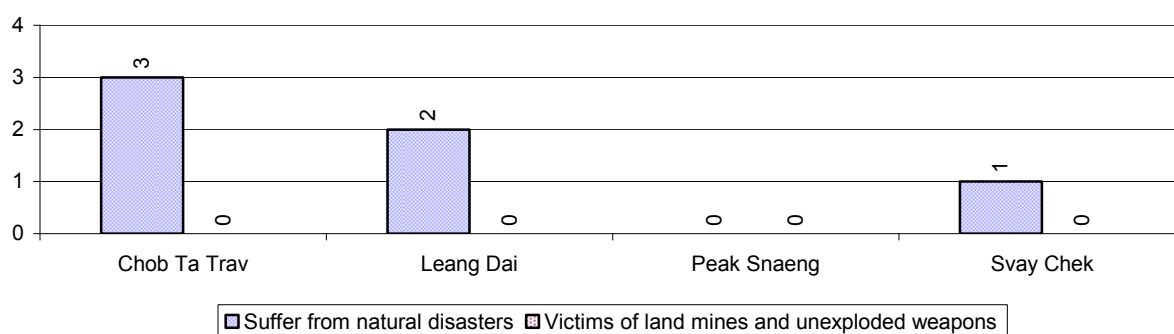




### 3.4.5 Number of disabled People who could or could not earn an Income, by Commune, for 2008



### 3.4.6 Number of Families who suffered from natural Disasters, and number of Victims of Land Mines and unexploded Weapons, by Commune, in 2008



## 3.5 Migration

### 3.5.1 Migration over 3 years

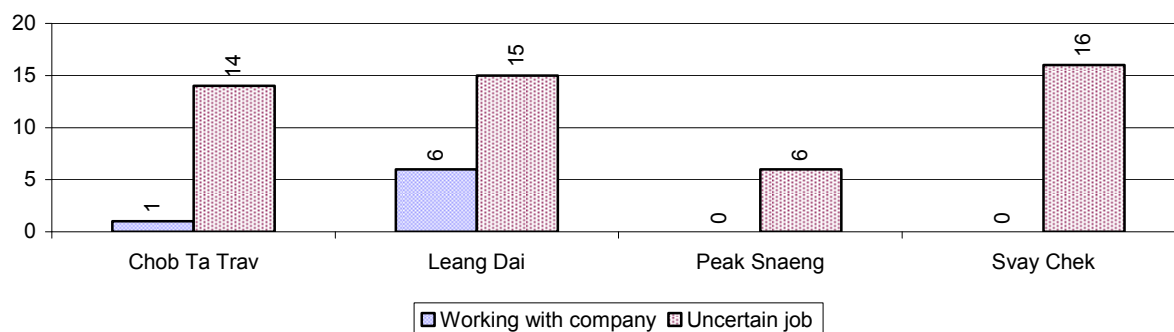
Description	2006	2007	2008
Number of families permanently in-migrated	families	42 families	65 families
Total number of people	96 person(s)	138 person(s)	265 person(s)
Total number of female	52 person(s)	66 person(s)	141 person(s)
Number of families permanently out-migrated	14 families	25 families	22 families
Total number of people	48 person(s)	106 person(s)	97 person(s)
Total number of female	22 person(s)	55 person(s)	47 person(s)
Number of families staying temporarily	34 families	43 families	24 families
Total number of people	121 person(s)	105 person(s)	90 person(s)
Total number of female	60 person(s)	50 person(s)	42 person(s)

### 3.5.2 Job Migration

Description	2006	2007	2008
Number of people migrated to work with company/factory	0%	0%	0%
Number of people migrated to work, but have uncertain jobs	1%	0%	0%

**Note:** Calculated as a percentage of the total population of 18-60 year olds

### 3.5.3 Number of People working outside their home Villages in a Company/Factory or with an uncertain Job in 2008

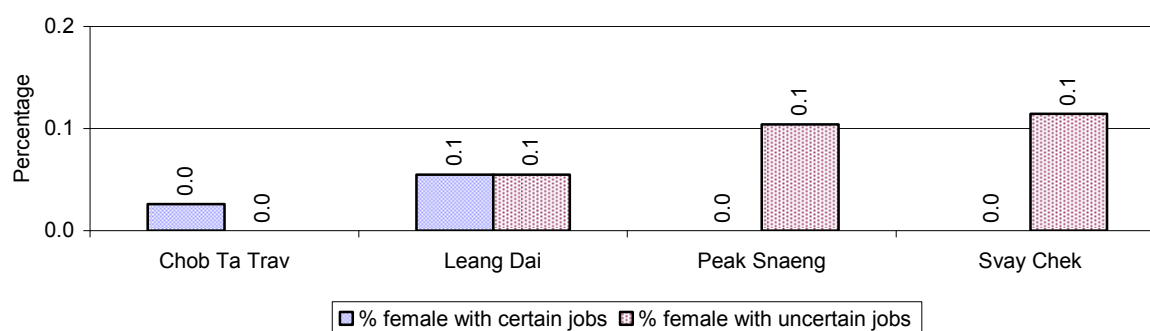


### 3.5.4 Female migration over 3 years

Description	2006 %	2007 %	2008	
			%	Number
Total number of migrants	0.3%	0.2%	0.2%	58 person(s)
Number of female migrants	0.1%	0.1%	0.1%	23 person(s)
Total number of migrants, who go to work with company/factory (with certain jobs)	0.0%	0.0%	0.0%	7 person(s)
Number of female migrants with certain jobs	0.0%	0.0%	0.0%	6 person(s)
Total number of migrants with uncertain jobs	0.3%	0.2%	0.2%	51 person(s)
Number of female migrants with uncertain jobs	0.1%	0.1%	0.1%	17 person(s)

**Note:** Calculated as a percentage of the total population

### 3.5.5 Percentage female Migrants with certain and uncertain Jobs, by Commune, in 2008



**Note:** Calculated as a percentage of the total population of the commune

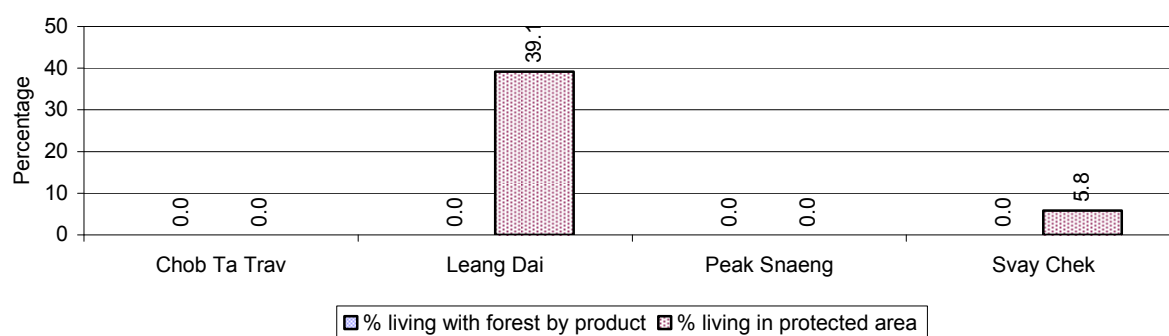
## 4 Natural Resources and Environment (NRE)

### 4.1 Families involved with NRE issues over 3 years

Description	2006 %	2007 %	2008	
			%	Number
Families living with forest by products	0 %	0 %	0 %	0 families
Families living in a protected area	10 %	22 %	17 %	755 families
Houses with access to garbage collection service	0 %	0 %	0 %	0 families
Families affected by environmental pollution	0 %	0 %	0 %	0 families
Families using chemical fertilizer	1 %	2 %	1 %	39 families
Families using chemical pesticide	1 %	1 %	0 %	22 families

**Note:** Calculated as a percentage of the total number of families

### 4.2 Percentage of Families involved with Natural Resource issues, by Commune, for 2008



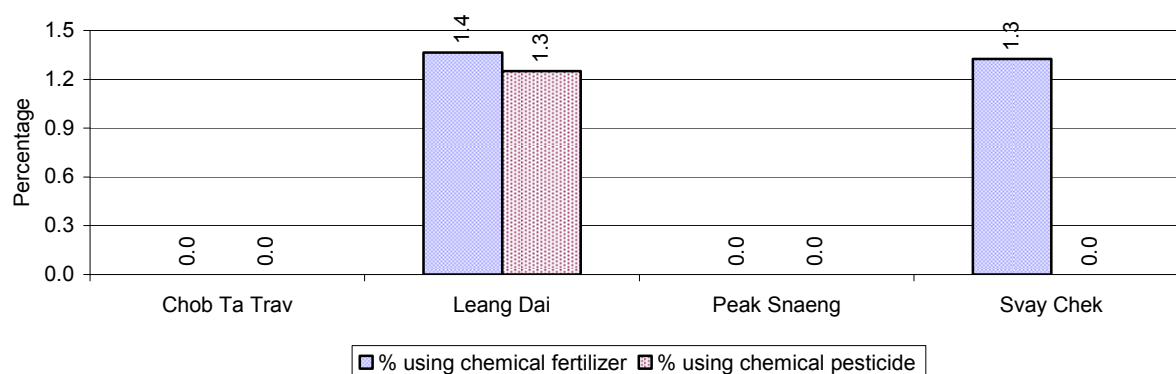
**Note:** Calculated as a percentage of the number of families in each commune

### 4.3 Percentage Houses with access to Garbage collection and Families affected by environmental Pollution, by Commune, for 2008

There were no houses with access to garbage collection and there were no families affected by environmental pollution in this District in 2008

**Note:** Garbage collection is calculated as a percentage of the total number of houses in each commune and families affected by environmental pollution is calculated as a percentage of the total number of families in each commune.

### 4.4 Percentage Families using chemical Fertilizer and chemical Pesticides, by Commune, for 2008



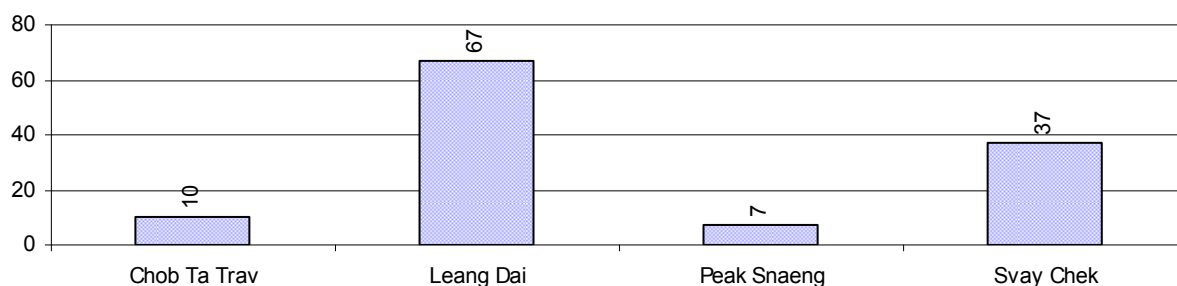
**Note:** Calculated as a percentage of the total number of families in each commune

## 5 Administration and Security

### 5.1 Birth Registration across 3 years

Description	2006	2007	2008
Number of infants to be registered	493 person(s)	468 person(s)	461 person(s)
Number of unregistered infants the year	357 person(s)	133 person(s)	121 person(s)
Percentage of infants unregistered	72 %	28 %	26 %

### 5.2 Number of unregistered Infants born in 2008, by Commune

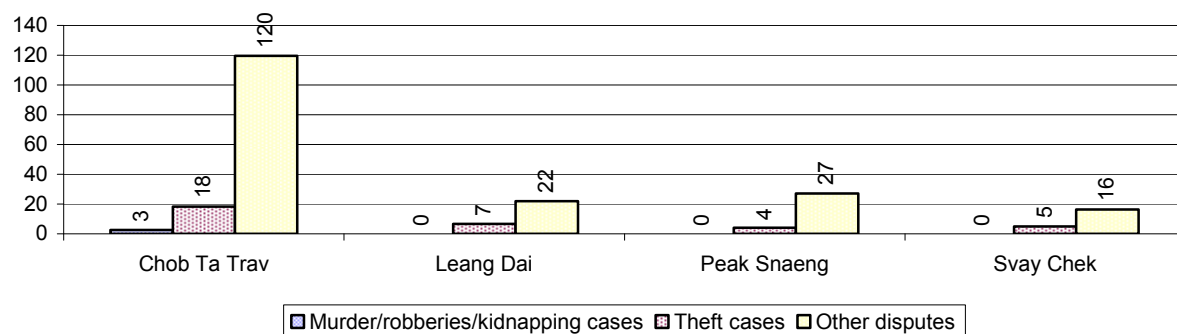


### 5.3 Registered criminal Cases over 3 years

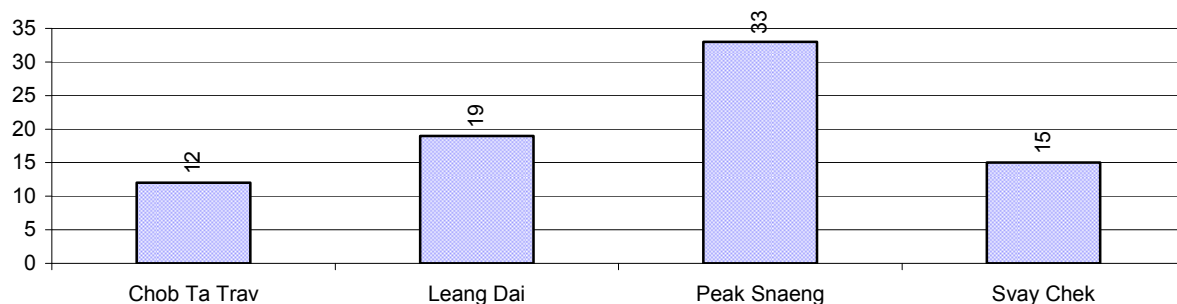
Description	2006	2007	2008
Murders, robberies and kidnapping cases	4 case(s)	2 case(s)	1 case(s)
Theft cases	11 case(s)	14 case(s)	18 case(s)
land dispute cases	117 case(s)	123 case(s)	79 case(s)
Other disputes cases	115 case(s)	90 case(s)	89 case(s)

**Note:** this reflects only registered criminal cases

### 5.4 Registered criminal Cases per 10,000 people, by Commune, for 2008



### 5.5 Number of registered Land Disputes, by Commune, in 2008

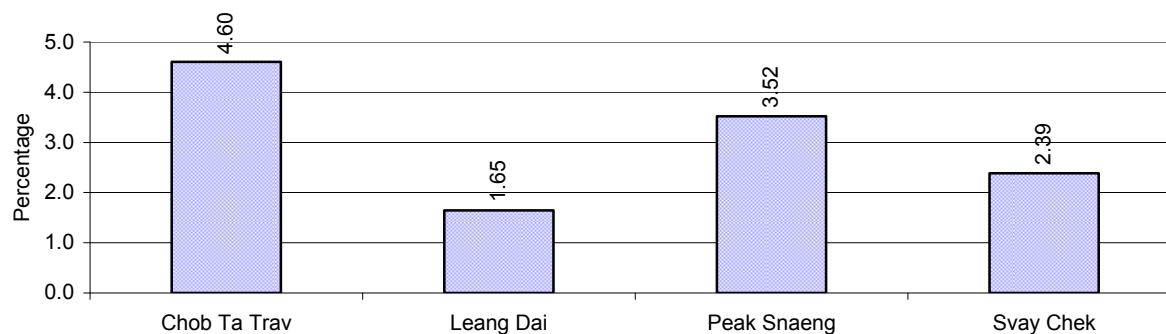


## 6 Gender

### 6.1 Registered Domestic Violence over 3 years

Description		2006	2007	2008
Families experiencing domestic violence		127 families	115 families	122 families(s)
% families experiencing domestic violence		3 %	3 %	3 %
Domestic violence cases reported by village chiefs		85 case(s)	64 case(s)	101 case(s)
Type	Physical violence	21 case(s)	33 case(s)	50 case(s)
	Sexual violence	1 case(s)	3 case(s)	6 case(s)
	Mental violence	36 case(s)	7 case(s)	28 case(s)
	Household economic violence	27 case(s)	21 case(s)	17 case(s)
Number of administrative decisions on domestic violence		0 case(s)	41 case(s)	84 case(s)
% of administrative decisions on domestic violence		0 %	64 %	83 %

### 6.2 Percentage of registered cases of Families experiencing domestic Violence, by Commune, in 2008



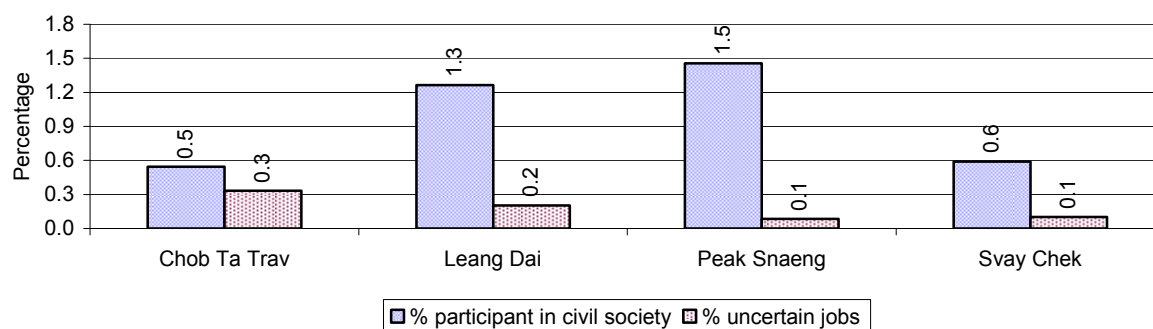
**Note:** Calculated as a percentage of the total number of families in each commune

### 6.3 Women's involvement over 3 years

Description	2006 %	2007 %	2008	
			%	Number
People participating in civil society	1%	1%	2%	387 person(s)
Women participating in civil society	1%	1%	1%	242 person(s)
People, 18-60 yrs, with uncertain/irregular jobs	1%	0%	1%	60 person(s)
Women, 18-60 yrs, with uncertain/irregular jobs	0%	0%	0%	20 person(s)

**Note:** Participation can be in NGOs, CBOs, credit groups, women's unions, parties and other civil society organizations. The first section is calculated as a percentage of the total population. The second section is calculated as a percentage of the total 18-60 year old population.

#### 6.4 Percentage of Female Participants in Civil Society and of 18-60 year women with uncertain Jobs, by Commune, in 2008



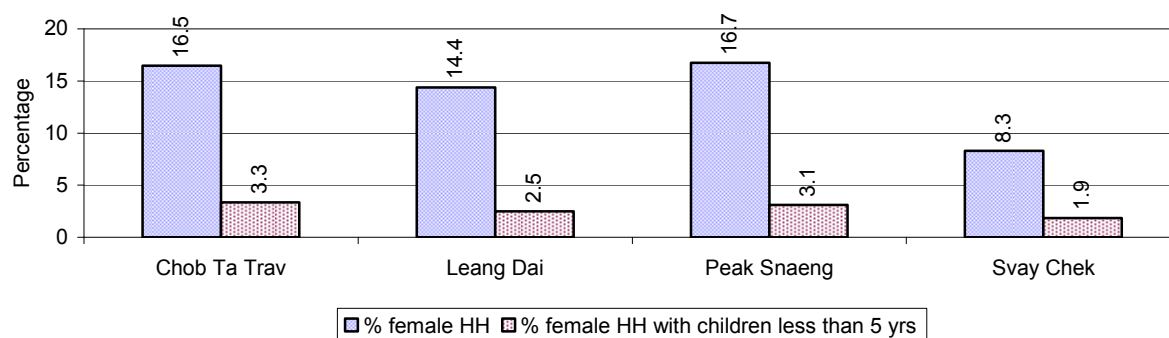
**Note:** Percentage of female participants in civil society is calculated as a percentage of the total population per commune. The percentage of 18-60 years old women with uncertain jobs is calculated as a percentage of the total 18-60 year old population per commune.

#### 6.5 Female-headed Households over 3 years

Families with:	2006	2007	2008	
	%	%	%	Number
Households in which a woman is the family head	13%	11%	14%	622 families
Households in which a woman is the family head with children of less than 5 yrs	3%	3%	3%	118 families

**Note:** Calculated as a percentage of the total number of families

#### 6.6 Percentage female-headed Households and with Children of less than 5 years old, by Commune, in 2008



**Note:** Calculated as a percentage of the total number of families in each commune  
HH: Headed Household

## 7 Indigenous People in the District

### 7.1 Ethnic Minorities in the District over 3 years

Race of indigenous	2006		2007		2008	
	# families	# population	# families	# population	# families	# population
Phnong	0 families	0 person(s)	0 families	0 person(s)	0 families	0 person(s)
Kouy	0 families	0 person(s)	0 families	0 person(s)	0 families	0 person(s)
Stieng	0 families	0 person(s)	0 families	0 person(s)	0 families	0 person(s)
Mil	0 families	0 person(s)	0 families	0 person(s)	0 families	0 person(s)
Kroal	0 families	0 person(s)	0 families	0 person(s)	0 families	0 person(s)
Thmorn	0 families	0 person(s)	0 families	0 person(s)	0 families	0 person(s)
Khaonh	0 families	0 person(s)	0 families	0 person(s)	0 families	0 person(s)
Tompouonn	0 families	0 person(s)	0 families	0 person(s)	0 families	0 person(s)
Charay	0 families	0 person(s)	0 families	0 person(s)	0 families	0 person(s)
Kroeung	0 families	0 person(s)	0 families	0 person(s)	0 families	0 person(s)
Kavet	0 families	0 person(s)	0 families	0 person(s)	0 families	0 person(s)
Saouch	0 families	0 person(s)	0 families	0 person(s)	0 families	0 person(s)
Lun	0 families	0 person(s)	0 families	0 person(s)	0 families	0 person(s)
Kachak	0 families	0 person(s)	0 families	0 person(s)	0 families	0 person(s)
Praov	0 families	0 person(s)	0 families	0 person(s)	0 families	0 person(s)
Others	0 families	0 person(s)	0 families	0 person(s)	0 families	0 person(s)
<b>Total</b>	0 families	0 person(s)	0 families	0 person(s)	0 families	0 person(s)

**Note:** "Others" refer to other ethnic groups which are not listed.

### 7.2 Other Minorities in the District over 3 years

Minority	2006		2007		2008	
	# families	# population	# families	# population	# families	# population
Khmer Islamic	0 families	0 person(s)	0 families	0 person(s)	2 families	10 person(s)
Vietnamese	0 families	0 person(s)	0 families	0 person(s)	0 families	0 person(s)
Laos	0 families	0 person(s)	0 families	0 person(s)	0 families	0 person(s)

**Note:** Number of indigenous and minority population are additional data, so some village may not recorded.





## **SECTION C: PLANS AND PROJECTS**



## 8 Priorities and Plans

### 8.1 Priorities of Commune Councils for 2009 in the District by Sector

The District Priority Activity Matrix (DPAM) data are taken from the CDPD. The DPAM is used for the District Integration Workshop (DIW), to show what kind of projects the commune has proposed in their Commune Investment Plan (CIP) for 2009. Donors, departments and other agencies then consider which projects they want to support and which projects they are not interested in. This results in Temporary Agreements between the Commune Council and the Supporter (NGO, Department, private donor, etc), as shown in table 8.2

No.	Project Name	Chob Ta Trav	Leang Dai	Peak Snaeng	Svay Chek	Req.Project
		170201	170202	170203	170204	Total
Economic						
1	Compost fertilizer training				2 training	1
2	Mixed farming system training		100 family		32 place	2
3	Rice field demonstration				6 place	1
4	Subsidiary cropping technique training			10 person		1
5	Mushroom growing training				18 place	1
6	Rice cultivation technique training	2 training				1
7	Animal vaccination request	2 training	1000 Head	600 Head		3
8	Village veterinary training	2 training		12 person		2
9	Compost making hut building	50 place		100 place		2
10	Rice seed request	5000 Kg		3 T	1800 Kg	3
11	Calf for raising request	10 Head				1
12	Vegetable seeds request				2 time	1
13	Chicken request	50 Head				1
14	Family fish pond construction		35 place			1
15	Fish fingerling request		7000 Head			1
16	Earth road construction		7000 m	2000 m	5000 m	3
17	Laterite/natural gravel road construction		4300 m		7500 m	2
18	Culvert construction	2 place	10 place	1 place	12 place	4
19	Bridger construction		2 place		1 place	2
20	Earth road repairing	2000 m		1000 m	6000 m	3
21	Canal construction			1050 m		1
22	Dam construction			2 place		1
23	Water gate construction			2 place		1
24	Canal repairing	1500 m	4500 m	2000 m	2300 m	4
25	Dam repairing		2700 m	4 place		2

District Data Book 2009: Development Plans and Projects

No.	Project Name	Chob Ta Trav	Leang Dai	Peak Snaeng	Svay Chek	Req.Project
		170201	170202	170203	170204	Total
26	Cash credit	5 Team				1
27	Crop seed credit				20 Team	1
<b>Social</b>						
1	Family planning	2 training		200 person		2
2	Reproductive health awareness education				2 time	1
3	Antenatal care service accessibility improvement	12 time		200 person		2
4	Sexual disease treatment needs				2 time	1
5	HIV/AIDS awareness education	2 training		1000 person		2
6	Health/hygiene education for local people	2 training	1 time		2 time	3
7	Transmitted disease education and prevention			1000 person		1
8	Children immunization provision	2 training		200 person		2
9	Children and women vaccination		1 time		2 time	2
10	TBA training				12 person	1
11	Health support committee meeting				1 training	1
12	Patients transport mean improvement		8 set		3 set	2
13	Nutrition support	20 T	2039 person	20 T		3
14	Latrine construction	50 toilet	1000 toilet	300 place	300 place	4
15	Latrine use education		1 time			1
16	Commune health center construction				1 building	1
17	Water filter equipment supply	100 Container				1
18	Pump wells construction			40 place		1
19	Pump wells repairing			60 place		1
20	Ponds repairing			1 place		1
21	Literacy class			6 class	6 class	2
22	Village library construction				1 building	1
23	Junior high school construction	5 room				1
24	School office construction				1 building	1
25	Primary school creation/construction		6 room		12 room	2
26	Kindergarten school construction/repair	2 class	8 place	6 class	3 class	4
27	Pre-school teacher/kid keeper support	4 person				1
28	Teacher/volunteer teacher need	10 person	10 person	10 person	15 person	4
29	School enrollment encouragement project				1 time	1
30	Food/meal provision to school children				6 schools	1
31	Scholarship provision to poor pupils		60 person		15 person	2
32	Vocational training		20 person			1

District Data Book 2009: Development Plans and Projects

No.	Project Name	Chob Ta Trav	Leang Dai	Peak Snaeng	Svay Chek	Req.Project
		170201	170202	170203	170204	Total
33	Computer skill training				1 person	1
34	Pnong and Khmer language non-formal teaching				1 person	1
35	School children toys supply	2 time			1 time	2
36	Food for work needs				1 time	1
37	Gifts building construction			5 place	2 place	2
<b>NREM</b>						
1	Forestry law education	2 training			2 time	2
2	Wildlife protection law education	2 training				1
3	Establishment of NREM protection community				4 time	1
4	NREM programme			1 place		1
5	NREM strengthening		1 training		2 Team	2
6	Tree plantation project	2000 Tree	1000 Tree	2 place	3000 Tree	4
7	Illegal fishing prevention		2 time			1
8	Community forestry activities support			2 place	1 time	3
9	Forest protection strengthening		2 training		2 time	2
10	Wildlife hunting prevention strengthening	2 training		2 training		2
11	Wildlife protection enforcement	2 place		2 place		2
12	Management/conservation of natural resources strengthening		1 place			1
<b>Administration and Security</b>						
1	Civil registration encouragement			100 person		1
2	CC capacity strengthening			2 training		1
3	Commune office construction/renovation	1 place		1 place	1 building	3
4	Land law dissemination	2 training	2 time			2
5	Provision of land titles/certificates	720 doc	1500 ha	1000 doc		3
6	Land registration dissemination/enforcement				4273 ha	1
7	Village/commune border identification		1 time		1 time	2
8	People guard activities formation/strengthening			2 training		1
9	Local security strengthening	2 training				1
10	Gambling control/elimination activation			2 training		1
11	Gangs gathering educated for local security			2 training		1
12	Abused/violated/illegal acts quelled activation				2 time	1
13	Local security regulation/order dissemination	2 training				1
14	Law/regulation dissemination				2 time	1
15	Wedding/family law dissemination		2 time			1

District Data Book 2009: Development Plans and Projects

No.	Project Name	Chob Ta Trav	Leang Dai	Peak Snaeng	Svay Chek	Req.Project
		170201	170202	170203	170204	Total
Gender						
1	Gender mainstreaming concept training		2 time			1
2	Gender mainstreaming among local people				1 time	1
3	Gender FP strengthening	2 training				1
4	Women capacity building for social participation		30 person			1
5	Women leadership strengthening/capacity building		3 time			1
6	Woman and children's rights dissemination	2 training		2 training	1 time	3
7	Law against domestic violence dissemination	2 training	2 time	2 training	2 time	4

**Source:** CDPD – District Priority Matrix

## 8.2 Temporary Agreements by Commune, for 2009<sup>2</sup>

At the District Integration Workshop (DIW) the Supporters (donors, agencies, private donors, NGOs, etc.) identify which projects/activities they would like to support or they put forward their own projects to be implemented in a particular commune. Once there is agreement between Commune Councils and Supporters on specific projects a **Temporary Agreement** is signed by the commune and the Supporter to show their mutual commitment to the identified projects/activities.

It is important to keep in mind that such Temporary Agreements do not necessarily result in implementation.

### 8.2.1 Temporary Agreements for 2009 as per DIW 2008 for Commune: Chob Ta Trav

Commune GIS	Commune	Temporary Agreements				Supporter	Funding Source	Listed in CIP befor DIW
		Project Name	Quantity	Unit	Est.Cost (K.Riels)			
Economic								
170201	Chob Ta Trav	Cash saving training	150	person	240	Economic and Social Relaunch of Northern Provinces		<input type="checkbox"/>
170201	Chob Ta Trav	Training and fund provision to farmers for agriculture production, livestock and fish raising	40	person	10035	Economic and Social Relaunch of Northern Provinces		<input type="checkbox"/>
170201	Chob Ta Trav	Agriculture, livestock and fish raising technique training to farmers	380	person	10035	Economic and Social Relaunch of Northern Provinces		<input type="checkbox"/>
170201	Chob Ta Trav	Product chain development, vegetable, fruit tree, mushroom and other crops	20	person	3875	Economic and Social Relaunch of Northern Provinces		<input type="checkbox"/>
170201	Chob Ta Trav	Cash credit	1	Team	15750	Economic and Social Relaunch of Northern Provinces		<input checked="" type="checkbox"/>
Social								
170201	Chob Ta Trav	Latrine construction	80	toilet	112000	Plan International		<input checked="" type="checkbox"/>
170201	Chob Ta Trav	Skills training of commune target people	42	person	20580	Economic and Social Relaunch of Northern Provinces		<input type="checkbox"/>
170201	Chob Ta Trav	Fish processing (paste) skills training and dissemination to farmer	1	training	100	Economic and Social Relaunch of Northern Provinces		<input type="checkbox"/>
170201	Chob Ta Trav	Health awareness training and dissemination in target area	3	village	309	Economic and Social Relaunch of Northern Provinces		<input type="checkbox"/>
170201	Chob Ta	Safe water supply materials (wells, giant	3	village	38165	Economic and Social Relaunch		<input type="checkbox"/>

<sup>2</sup> Not all the data from the CDPD has been translated to English, this has resulted in some cells in the TA tables being blank.

District Data Book 2009: Development Plans and Projects

Commune GIS	Commune	Temporary Agreements				Supporter	Funding Source	Listed in CIP before DIW
		Project Name	Quantity	Unit	Est.Cost (K.Riels)			
	Trav	jars and pond)				of Northern Provinces		
170201	Chob Ta Trav	Essentials of soil curriculum for lower and upper secondary school	3	schools	17132	Economic and Social Relaunch of Northern Provinces		<input type="checkbox"/>
170201	Chob Ta Trav	Literacy class operation	1	class	3500	Department of Education Youth and Sports		<input type="checkbox"/>
170201	Chob Ta Trav	Vocational skills training for mine/UXO disabled people	3	person	1470	Economic and Social Relaunch of Northern Provinces		<input type="checkbox"/>
<b>NREM</b>								
170201	Chob Ta Trav	Environmental improvement, agriculture services, rice seed and livestock production, livestock bank, vaccination, cropping, animal feed crop project	2	village	12566	Economic and Social Relaunch of Northern Provinces		<input type="checkbox"/>
<b>Administration and Security</b>								
170201	Chob Ta Trav	LIP committee and CC strengthening	1	training	471	Economic and Social Relaunch of Northern Provinces		<input type="checkbox"/>
170201	Chob Ta Trav	Community development and mine/UXO clearance	3	village	1000	Economic and Social Relaunch of Northern Provinces		<input type="checkbox"/>
170201	Chob Ta Trav	Land ownership right awareness campaigns	3	village	14690	Economic and Social Relaunch of Northern Provinces		<input type="checkbox"/>
<b>Gender</b>								
170201	Chob Ta Trav	Female councilors capacity strengthening forum	2	training	200	Department of Women		<input type="checkbox"/>

### 8.2.2 Temporary Agreements for 2009 as per DIW 2008 for Commune: Leang Dai

Commune GIS	Commune	Temporary Agreements				Supporter	Funding Source	Listed in CIP befor DIW
		Project Name	Quantity	Unit	Est.Cost (K.Riels)			
Economic								
170202	Leang Dai	Agriculture products processing	1	training	800	Royal Youth Democratic Association		<input type="checkbox"/>
170202	Leang Dai	Perfume rice crop demonstration	25	person	1068	Department of Agriculture Forestrv and Fisheries		<input type="checkbox"/>



District Data Book 2009: Development Plans and Projects

Commune GIS	Commune	Temporary Agreements				Supporter	Funding Source	Listed in CIP befor DIW
		Project Name	Quantity	Unit	Est.Cost (K.Riels)			
170202	Leang Dai	Mixed farming system training	1	training	800	Royal Youth Democratic Association		✓
170202	Leang Dai	Irrigation canal rehabilitation	800	m	48000	Royal Youth Democratic Association		✓
170202	Leang Dai	Funding for job creation	20	Team	16000	Royal Youth Democratic Association		□
170202	Leang Dai	Chicken raising	3	person	1092	Department of Agriculture Forestry and Fisheries		□
<b>Social</b>								
170202	Leang Dai	Latrine construction	9	village	150000	Asian Development Bank		✓
170202	Leang Dai	Pump well construction	20	well	28000	Royal Youth Democratic Association		□
170202	Leang Dai	Production and food improvement women development project	2	training	20000	Asian Development Bank		□
170202	Leang Dai	Literacy class operation	1	class	3500	Department of Education Youth and Sports		□
<b>NREM</b>								
170202	Leang Dai	NREM strengthening	1	training	800	Royal Youth Democratic Association		✓
<b>Gender</b>								
170202	Leang Dai	Female councilors capacity strengthening forum	2	training	200	Department of Women		□
170202	Leang Dai	Law against domestic violence dissemination	1	training	110	Department of Women	PIF	✓
170202	Leang Dai	Women leadership strengthening/capacity building	4	training	800	Royal Youth Democratic Association		✓
170202	Leang Dai	Gender mainstreaming concept training	4	training	800	Royal Youth Democratic Association		✓
170202	Leang Dai	Gender mainstreaming concept training	1	training	100	Department of Women		✓
170202	Leang Dai	Law against domestic violence dissemination	4	time	800	Royal Youth Democratic Association		✓

**8.2.3 Temporary Agreements for 2009 as per DIW 2008 for Commune: Peak Snaeng**

Commune GIS	Commune	Temporary Agreements				Supporter	Funding Source	Listed in CIP befor DIW
		Project Name	Quantity	Unit	Est.Cost (K.Riels)			
Economic								
170203	Peak Snaeng	Chicken raising dissemination	3	person	1092	Department of Agriculture Forestry and Fisheries		<input type="checkbox"/>
170203	Peak Snaeng	Funding for job creation	20	Team	16000	Royal Youth Democratic Association		<input type="checkbox"/>
170203	Peak Snaeng	Subsidiary cropping technique training	3	village	800	Royal Youth Democratic Association	PIF	✓
170203	Peak Snaeng	Compost hut building	3	training	6000	Royal Youth Democratic Association		✓
Social								
170203	Peak Snaeng	HIV/AIDS awareness education	3	training	800	Royal Youth Democratic Association		✓
170203	Peak Snaeng	Latrine construction	6	village	150000	Asian Development Bank		✓
170203	Peak Snaeng	Literacy class	1	class	100	Department of of Religions and Cults		✓
170203	Peak Snaeng	Literacy class	3	class	1400	Department of Education Youth and Sports		✓
170203	Peak Snaeng	Pump wells construction	3	village	28000	Royal Youth Democratic Association		✓
Administration and Security								
170203	Peak Snaeng	Basic right dissemination	2	training	800	Royal Youth Democratic Association		<input type="checkbox"/>
Gender								
170203	Peak Snaeng	Female councilors capacity strengthening forum	2	training	200	Department of Women		<input type="checkbox"/>
170203	Peak Snaeng	Law against domestic violence dissemination	2	training	800	Royal Youth Democratic Association		✓

### 8.2.4 Temporary Agreements for 2009 as per DIW 2008 for Commune: Svay Chek

Commune GIS	Commune	Temporary Agreements				Supporter	Funding Source	Listed in CIP before DIW
		Project Name	Quantity	Unit	Est.Cost (K.Riels)			
Economic								
170204	Svay Chek	Product chain development, vegetable, fruit tree, mushroom and other crops	40	person	6380	Economic and Social Relaunch of Northern Provinces		<input type="checkbox"/>
170204	Svay Chek	Compost fertilizer training	3	training	6000	Royal Youth Democratic Association		✓
170204	Svay Chek	Mixed farming system training	2	training	2000	Royal Youth Democratic Association		✓
170204	Svay Chek	Mushroom growing training	3	training	2000	Royal Youth Democratic Association		✓
170204	Svay Chek	Vegetable seeds request	3	time	2000	Royal Youth Democratic Association		✓
170204	Svay Chek	Crop seed credit	2	Team	1600	Royal Youth Democratic Association		✓
170204	Svay Chek	Crop seed credit	1	place	15750	Economic and Social Relaunch of Northern Provinces		✓
170204	Svay Chek	Cash saving training	100	person	160	Economic and Social Relaunch of Northern Provinces		<input type="checkbox"/>
170204	Svay Chek	Chicken raising training	4	person	1460	Department of Agriculture Forestry and Fisheries		<input type="checkbox"/>
170204	Svay Chek	Rice field demonstration	50	person	1068	Department of Agriculture Forestry and Fisheries		✓
Social								
170204	Svay Chek	Literacy class	1	class	100	Department of of Religions and Cults		✓
170204	Svay Chek	Literacy class	1	class	400	Economic and Social Relaunch of Northern Provinces		✓
170204	Svay Chek	Latrine construction	40	toilet	56000	Plan International		✓
170204	Svay Chek	Health/hygiene education for local people	3	time	600	Royal Youth Democratic Association		✓
170204	Svay Chek	Primary school construction	6	room	120000			✓
170204	Svay	Vocational skills training for mine/UXO	3	person	1470	Economic and Social Relaunch		<input type="checkbox"/>

District Data Book 2009: Development Plans and Projects

Commune GIS	Commune	Temporary Agreements				Supporter	Funding Source	Listed in CIP befor DIW
		Project Name	Quantity	Unit	Est.Cost (K.Riels)			
	Chek	disabled people				of Northern Provinces		
170204	Svay Chek	Fish processing (paste) skills training and dissemination to farmer	1	training	100	Economic and Social Relaunch of Northern Provinces		<input type="checkbox"/>
170204	Svay Chek	Health awareness training and dissemination	1	training	206	Economic and Social Relaunch of Northern Provinces		<input type="checkbox"/>
170204	Svay Chek	Safe water supply materials (wells, giant jars and pond)	2	village	32793	Economic and Social Relaunch of Northern Provinces		<input type="checkbox"/>
170204	Svay Chek	Essentials of soil curriculum for lower and upper secondary school	3	schools	11421	Economic and Social Relaunch of Northern Provinces		<input type="checkbox"/>
170204	Svay Chek	Pump well construction	15	well	21000	Royal Youth Democratic Association		<input type="checkbox"/>
170204	Svay Chek	Production and food improvement women development project	2	training	20000	Department of Women		<input type="checkbox"/>
170204	Svay Chek	Skills training for people	42	person	20580	Economic and Social Relaunch of Northern Provinces		<input type="checkbox"/>
Administration and Security								
170204	Svay Chek	LIP committee and CC strengthening	1	training	314	Economic and Social Relaunch of Northern Provinces		<input type="checkbox"/>
170204	Svay Chek	Community development and mine/UXO clearance	2	village	1000	Economic and Social Relaunch of Northern Provinces		<input type="checkbox"/>
170204	Svay Chek	Land ownership right awareness campaigns	2	village	7993	Economic and Social Relaunch of Northern Provinces		<input type="checkbox"/>
170204	Svay Chek	Basic right dissemination	3	training	600	Royal Youth Democratic Association		<input type="checkbox"/>
Gender								
170204	Svay Chek	Gender mainstreaming among local people	1	time	200	Royal Youth Democratic Association		✓
170204	Svay Chek	Female councilors capacity strengthening forum	2	training	100	Department of Women		<input type="checkbox"/>

**Source:** CDPD, District Level Detail TA resulting from DIW

### 8.3 Outputs, estimated and actual costs of C/S Fund Projects between 2005 and 2008, by Commune

Commune	Project Type	Budget Year	Output		Quantity	Unit	Unit Cost MR	
			Description	Type			Estimate	Actual
Chob Ta Trav	Rural Transport	2006	Laterite road	Repair	1.4	Km	45.04	45.04
Chob Ta Trav	Rural Transport	2007	Earth road	Repair	1.1	Km	22.97	23.86
Chob Ta Trav	Rural Transport	2008	Earth road	Repair	1.15	Km	24.11	22.00
Leang Dai	Rural Transport	2005	Earth road	Repair	0.83	Km	24.68	22.20
Leang Dai	Rural Transport	2005	Single pipe culvert	New	2	Place	4.31	22.20
Leang Dai	Rural Transport	2006	Single pipe culvert	New	1	Place	1.32	37.47
Leang Dai	Rural Transport	2006	Double pipe culvert	New	1	Place	2.27	37.47
Leang Dai	Rural Transport	2006	Earth road	New	1.1	Km	34.02	37.47
Leang Dai	Rural Transport	2007	Earth road	New	1.3	Km	40.11	39.90
Leang Dai	Rural Transport	2008	Triple cell box culvert	New	1	Place	26.04	25.90
Peak Snaeng	Rural Transport	2005	Earth road	New	0.82	Km	25.52	19.80
Peak Snaeng	Rural Transport	2005	Single pipe culvert	New	1	Place	2.13	19.80
Peak Snaeng	Irrigation	2006	Canal	New	0.45	Km	32.18	31.95
Peak Snaeng	Rural Transport	2007	Earth road	New	0.7	Km	26.65	25.30
Peak Snaeng	Rural Transport	2008	Earth road	New	1.4	Km	30.09	29.68
Svay Chek	Rural Transport	2005	Earth road	New	0.81	Km	25.61	25.10
Svay Chek	Rural Transport	2006	Laterite road	New	0.87	Km	28.64	28.68
Svay Chek	Rural Transport	2007	Earth road	New	1.2	Km	33.60	32.60
Svay Chek	Rural Transport	2008	Single pipe culvert	New	6	Place	29.36	29.00

Source: PID

### 8.4 Total Expenditure on C/S Fund Projects by sector and commune between 2005 and 2008

Sector	Total Cost in Million Riels			
	Chob Ta Trav	Leang Dai	Peak Snaeng	Svay Chek
Irrigation			31.95	
Rural Transport	90.90	125.47	74.78	115.38

Source: PID

**8.5 Actual 2009 C/S Fund projects by Commune**

Commune	Project Type	Project Output		Quantity	Unit	Fund Source (Riels)		
		Description	Type			Total	C/S	Local Contribution
Chob Ta Trav	Rural Transport	Earth road	Repair	1.15	km	29,304,000	28,804,000	500,000
Chob Ta Trav	Rural Transport	Single pipe culvert 0.6m diameter	New	2	Place	29,304,000	28,804,000	500,000
Leang Dai	Rural Transport	Wood bridge, 5 tonne, wood abutment	New	1	Place	46,065,492	45,000,892	1,064,600
Leang Dai	Rural Transport	Earth road	Repair	0.06	km	46,065,492	45,000,892	1,064,600
Peak Snaeng	Rural Transport	Earth road	Repair	1.5	km	30,012,796	29,512,796	500,000
Svay Chek	Rural Transport	Earth road	Repair	0.55	km	33,032,000	32,632,000	400,000
Svay Chek	Rural Transport	Double cell box culvert 3.0m x2.0m	New	1	Place	33,032,000	32,632,000	400,000

**Source:** PID

## 9 District level Projects from 2006 to 2009

District Initiative Projects (DIPs) are funded by Danida, DFID and PSDD (UNDP, DFID and SIDA).

### **Funding for 2006-2008**

Between 2006 and 2008 there were 14 provinces funded by PSDD and 10 by Danida and DFID. The list of provinces and who funded these is below

#### *Danida and DFID funded DIPs:*

Kampong Cham	Kampong Speu	Koh Kong	Kratie	Monduliri
Pursat	Ratanakiri	Siem Reap	Sihanoukville	Kep

#### *PSDD funded DIPs:*

Banteay Meanchey	Battambang	Kampong Chhnang	Kandal	Phnom Penh
Prey Veng	Svay Rieng	Takeo	Kampong Thom	Preah Vihear
Stung Treng	Kampot	Oddar Meanchey	Pailin	

### **Funding for 2009**

In 2009 there was a change to the number of provinces funded by the two streams. Danida and DFID were still funding the same 10 provinces they had been funding the previous three years, but two more provinces were added *Kampong Thom and Kampot*. Now PSDD funds 12 provinces and Danida and DFID fund 12.

## **9.1 District Initiative Infrastructure Projects from 2006 to 2009**

### **9.1.1 District Initiative Infrastructure Projects for 2006 to 2008**

Date	Project Name	Implementing Agencies	Budget (US\$)	Project Output & Capacity	Number of Beneficiaries
2007	Construct water gate	Inter-commune	2,350.00		
2008	Canal rehabilitation	Inter-commune	9,600.00	1200m	3 communes

### **9.1.2 District Initiative Infrastructure Projects in 2009**

*No District Initiative Infrastructure Projects have been implemented in this district for 2009*

## 9.2 District Initiative Service Projects from 2006 to 2009

### 9.2.1 District Initiative Service Projects for 2006 to 2008

Date	Project Names	Implementing agencies	Budget (US\$)	Project Output & Capacity	Number of Beneficiaries
2007	Strengthen community forestry	Forestry Admin	2,700.00		
2007	Disseminate forestry law	Forestry Admin	3,200.00		
2007	Disseminate fishery violation law	District Agri	1,656.00		
2007	Disseminate land law	District Land	1,556.00		
2007	Eco tourism community	Commune chiefs	15,488.00		
2008	Strengthen cultural tourism community	District Culture	13,460.00	4 communes	2 Groups
2008	Cultural tourism community	Community	1,940.00	4 communes	4 Groups
2008	Animal vaccination and parasite prevention	District AGRI	1,600.00	4 communes	2 Groups

### 9.2.2 District Initiative Service Projects in 2009

Project Name	Sector	Implementing Agency	Budget	Project outputs/ capacities	No. of Beneficiaries		Progress	Remarks on Issues of Progress
					Total	Female		
Strengthen the cultural tourism community	TOU	Culture Office	\$6,000.00	1 place	22,459	11,544	0%	
System of rice intensification	AGR	Agriculture Office	\$2,000.00	3 places	150	78	90%	On going
Training and demos on compost making technique	AGR	Agriculture Office	\$680.00	4 course	45	30	100%	On going

## 9.3 Inter Commune Council Projects in 2008 and 2009

### 9.3.1 ICC Projects in 2008

*No ICC projects in this district at this time*

### 9.3.2 ICC Projects in 2009

*No ICC projects in this district at this time*

**Source:** ICC project, Ministry of Interior (DoLA), -UNDP project for Local Governance – DDLG



## **9.4 Other Projects in 2008 and 2009**

### **9.4.1 RPRP**

*There are no RPRP projects being implemented in this district or province at this time. The RPRP is only being implemented in Svay Rieng and Prey Veng*

#### **9.4.1.1 RPRP Projects from 2006 to 2008**

*No RPRP projects in this district at this time*

#### **9.4.1.2 RPRP Projects in 2009**

*No RPRP projects in this district at this time*

### **9.4.2 Seth Korma**

#### **9.4.2.1 Seth Koma 2007**

*There are no Seth Korma projects being implemented in this district or province at this time.*

**Source:** UNICEF

#### **9.4.2.2 Seth Koma 2008**

*There are no Seth Korma projects being implemented in this district or province at this time.*

**Source:** UNICEF

#### **9.4.2.3 Seth Koma 2009**

*There are no Seth Korma projects being implemented in this district or province at this time.*

**Source:** UNICEF



## **SECTION D: SERVICES AND ORGANIZATIONS**



## 10 Infrastructure

### 10.1 Length of and Expenditure on Roads in 2008, by District

Roads	SRP	Angkor Chum	Angkor Thum	Banteay Srei	Chi Kraeng	Kralanh	Puok
Length of paved road in the district in Km	106	14	0	4	50	4	0
Length of unpaved roads in the district in Km	2,006	124	59	87	298	198	200
Amount spent on construction of roads in 2008 (\$)	n/a	n/a	n/a	n/a	n/a	n/a	n/a
Amount spent on repair and rehabilitation of roads in 2008 (\$)	n/a	n/a	n/a	n/a	n/a	n/a	n/a

Continue...

Roads	SRP	Prasat Bakong	Siem Reap	Soutr Nikom	Srei Snam	Svay Leu	Varin
Length of paved road in the district in Km	106	14	9	12	0	0	0
Length of unpaved roads in the district in Km	2,006	318	178	161	108	36	239
Amount spent on construction of roads in 2008 (\$)	n/a	n/a	n/a	n/a	n/a	n/a	n/a
Amount spent on repair and rehabilitation of roads in 2008 (\$)	n/a	n/a	n/a	n/a	n/a	n/a	n/a

**Note 1:** Please note that these data are not necessarily complete or correct. The data are derived from government agencies at provincial and district level which used different recording systems, did not always have complete data or were, sometimes, less than willing to share their data.

**Note 2:** Please be aware that these data are incomplete due to the fact that the amounts for the construction, repair and rehabilitation recorded reflect only funds provided by the government, not the contributions by any other parties.

### 10.2 Scale of and Expenditure on Irrigation in 2008, by District

Irrigation	SRP	Angkor Chum	Angkor Thum	Banteay Srei	Chi Kraeng	Kralanh	Puok
Number of irrigation schemes operating in 2008	55	3	3	4	5	4	na
Total nr of hectares under irrigation in dry season 2008	14,624	0	0	70	3,673	550	3,965
Total funds spent in 2008 on construction of irrigation systems (\$)	244,573	26,130	18,620	26,784	24,923	43,300	n/a
Total funds spent in 2008 on rehabilitation/repair of irrigation systems (\$)	73,542	6,102	4,500	5,379	7,207	0	n/a
Total funds spent in 2008 on operation and maintenance (\$)	-	0	0	0	0	0	0

Continue...

Irrigation	SRP	Prasat Bakong	Siem Reab	Soutr Nikom	Srei Snam	Svay Leu	Varin
Number of irrigation schemes operating in 2008	55	8	0	4	7	6	11
Total nr of hectares under irrigation in dry season 2008	14,624	2,150	2,544	1,672	0	0	0
Total funds spent in 2008 on construction of irrigation systems (\$)	244,573	16,810	0	1,908	31,468	23,590	31,040
Total funds spent in 2008 on rehabilitation/repair of irrigation systems (\$)	73,542	3,294	0	22,321	16,753	6,700	1,286
Total funds spent in 2008 on operation and maintenance (\$)	-	0	0	0	0	0	0

**Note 1:** Please note that these data are not necessarily complete or correct. The data are derived from government agencies at provincial and district level which used different recording systems, did not always have complete data or were, sometimes, less than willing to share their data.

**Note 2:** Please be aware that the data above are incomplete as these only reflect funds provided by the government, not the contributions by farmers or other parties.

### 10.3 Power Supply in 2008, by District

Electricity	SRP	Angkor Chum	Angkor Thum	Banteay Srei	Chi Kraeng	Kralanh	Puok
Total number of electricity connections to households	39,286	172	0	308	1,376	814	2,001
Total number of electricity connections to agencies, companies, organizations	388	0	0	0	0	0	0
Total volume in KWh of electricity consumed last in 2008	268,894,510	n/a	0	n/a	n/a	n/a	n/a
Total amount collected from users for consumed electricity (\$)	9,966,449	n/a	0	n/a	n/a	n/a	n/a
Per capita electricity consumption in 2008 in Kwh	747	n/a	0	n/a	n/a	n/a	n/a

Continue...

Electricity	SRP	Prasat Bakong	Siem Reab	Soutr Nikom	Srei Snam	Svay Leu	Varin
Total number of electricity connections to households	39,286	578	17,467	1,441	61	17	79
Total number of electricity connections to agencies, companies, organizations	388	0	194	0	0	0	0
Total volume in KWh of electricity consumed last in 2008	268,894,510	n/a	134,447,255	n/a	n/a	n/a	n/a
Total amount collected from users for consumed electricity (\$)	9,966,449	n/a	4,983,224	n/a	n/a	n/a	n/a
Per capita electricity consumption in 2008 in Kwh	747	n/a	n/a	n/a	n/a	n/a	n/a

**Note 1:** Please note that these data are not necessarily complete or correct. The data are derived from government agencies at provincial and district level which used different recording systems, did not always have complete data or were, sometimes, less than willing to share their data.

**Note 2:** These data only record electricity provided by electricity companies and does not include homes powered by generators or batteries (for this information see Section B: General Profile, Part 1: General Information; table 1.3.1 and chart 1.3.4).

**Note 3:** In most provinces electricity is only provided through town-based networks

**Note 4:** Per capita consumption is calculated by dividing the total volume of electricity produced in 2008 by the number of people living in each district as per the 2008 census (for the provincial data it is calculated against the number of people living in the province)

## 11 Health Facilities

Please note that the Operational District (health) boundaries are different to the administrative district boundaries. Therefore the data provided here shows the facilities, staff, NGOs etc in each Operational District within the province NOT the administrative district.

### Acronyms

<b>Com Cov</b>	Commune Covered	<b>MW2</b>	Secondary Midwives
<b>CPA</b>	Complementary Package of Activities	<b>NU1</b>	Primary Nurse
<b>Dr</b>	Doctor	<b>NU2</b>	Secondary Nurse
<b>FDH</b>	Former District Hospital	<b>OD</b>	Operational District
<b>HC</b>	Health Center	<b>Others</b>	Other Staff
<b>HC (NB)</b>	Health Center no building	<b>PHD</b>	Provincial Health Department
<b>HP</b>	Health Post	<b>Pop 04-05</b>	Population Covered 2004 or 2005
<b>MA</b>	Medical Assistant	<b>RH</b>	Referral Hospital
<b>MPA</b>	Minimum Package of Activities	<b>Vil Cov</b>	Village Covered
<b>MW1</b>	Primary Midwives	<b>VIL-HC</b>	Distance from Village to Health Center

### 11.1 Health Facilities in the Province, by Operational District

Siem Reap	OD	RH	HC	HP
Angkor Chum	1		15	
Kralanh	1	1	10	
Siem Reap	1	1	16	
Sotr Nikum	1	1	19	
<b>Total</b>	<b>4</b>	<b>3</b>	<b>60</b>	<b>0</b>

### 11.2 Health Facilities and Staff in the province, by Operational District

This table shows health facilities, staff and coverage of health facilities in each operational district.

No	Facility Name	Type	Class	Dr	Ma	Nu2	Nu1	Mw2	Mw1	Others	Com Cov	Vil Cov	Pop. 04-05
<b>Kralanh</b>													
1	Chonleas Dai	HC(NB)	None	0	0	0	0	0	0	0	3	13	10,274
2	Kampong Thkov	HC	MPA	0	0	0	2	0	2	2	3	21	14,721
3	Prei	HC(NB)	None	0	0	0	0	0	0	0	2	12	11,627
4	Prey Chrouk	HC	MPA	0	0	3	1	1	1	0	1	12	10,453
5	Rong Ko	HC	MPA	0	0	1	3	1	0	0	2	17	12,016
6	Sambour	HC	MPA	0	0	0	2	0	1	1	2	11	9,053
7	Sen Sokh	HC	MPA	0	0	1	1	1	0	0	3	25	17,472
8	Slaeng Spean	HC	MPA	0	0	2	2	0	0	0	2	21	13,215
9	Sraey Snam	FDH	MPA	0	0	5	1	0	0	1	2	9	9,004

District Data Book 2009: Services and Organizations

No	Facility Name	Type	Class	Dr	Ma	Nu2	Nu1	Mw2	Mw1	Others	Com Cov	Vil Cov	Pop. 04-05
<b>Total:</b>				<b>0</b>	<b>0</b>	<b>12</b>	<b>12</b>	<b>3</b>	<b>4</b>	<b>4</b>	<b>20</b>	<b>141</b>	<b>107,835</b>
<b>Siem Reap</b>													
1	Sranal	HC(NB)	None	0	0	0	0	0	0	0	1	13	9,420
2	AngKor Thum	FDH	MPA	0	1	3	2	1	0	0	1	8	7,807
3	Banteay Sraey	FDH	MPA	0	0	2	3	2	0	1	4	12	10,007
4	Chong Khnies	HC	MPA	0	0	3	2	2	0	0	1	7	5,858
5	Chreav	HC	MPA	0	0	2	2	2	1	0	3	14	13,193
6	Kandek	HC	MPA	0	0	2	1	2	1	1	2	16	14,083
7	Kantreang	HC	MPA	0	0	2	2	2	1	1	4	19	16,140
8	Kouk Chak	HC	MPA	0	0	1	4	1	0	0	2	12	20,217
9	Mean Chey	HC	MPA	0	0	3	2	0	1	1	3	12	11,501
10	Mondul I	HC	MPA	3	2	1	2	6	1	1	2	10	37,707
11	Peak Sneng	HC	MPA	0	0	3	0	1	0	1	2	10	7,089
12	Po Mean Chey	HC	MPA	0	0	2	1	4	0	0	1	8	12,402
13	Prasat Bakorng	FDH	MPA	0	0	5	1	2	0	0	5	17	19,909
14	Preak Dak	HC	MPA	0	0	3	1	1	0	1	2	9	10,344
15	Rumchek	HC	MPA	0	0	1	2	0	0	1	3	11	12,849
16	Sambour	HC	MPA	0	0	1	2	2	1	0	3	17	11,791
<b>Total:</b>				<b>3</b>	<b>3</b>	<b>34</b>	<b>27</b>	<b>28</b>	<b>6</b>	<b>8</b>	<b>39</b>	<b>195</b>	<b>220,317</b>
<b>Sotr Nikum</b>													
1	Siem Reap	FDH	MPA	0	0	3	4	3	0	1	2	10	31,911
2	Anlong Samnar	HC	MPA	0	0	3	2	1	0	0	2	28	18,420
3	Chan Sar	HC	MPA	0	0	2	2	1	0	0	2	23	10,949
4	Dam Daek	HC	MPA	0	0	1	1	1	1	0	2	12	12,379
5	Dan Run	HC	MPA	0	0	2	1	2	0	0	2	14	12,911
6	Kampong Kdei	FDH	MPA	1	1	3	3	3	0	1	2	21	14,650
7	Kampong Khlaing	HC	MPA	0	0	3	0	1	1	0	1	10	10,900
8	Khchas	HC	MPA	0	0	1	1	1	0	0	2	11	19,228
9	Khvav	HC	MPA	0	0	1	0	1	0	0	1	9	9,775
10	Kien Sangkae	HC	MPA	0	0	0	1	2	1	0	4	16	15,804
11	Kok Thlok Kraum	HC	MPA	0	0	2	0	0	1	0	3	13	10,129
12	Kouk Thlork Leu	HC(NB)	None	0	0	0	0	0	0	0	3	18	11,693
13	Lveng Russei	HC	MPA	0	0	2	1	0	0	0	1	13	10,637
14	Pongro Kraum	HC	MPA	0	0	3	1	1	0	0	3	17	10,412
15	Popel	HC	MPA	0	0	1	2	1	0	0	4	17	13,049



No	Facility Name	Type	Class	Dr	Ma	Nu2	Nu1	Mw2	Mw1	Others	Com Cov	Vil Cov	Pop. 04-05
16	Ruessei Lok	HC(NB)	None	0	0	0	0	0	0	0	1	6	12,906
17	Samraong	HC	MPA	0	0	2	1	2	1	0	2	13	11,336
18	Sangveuy	HC	MPA	0	0	2	1	2	0	0	2	7	8,697
19	Spean Tnaot	HC	MPA	0	0	2	2	1	0	0	2	18	10,857
<b>Total:</b>				<b>1</b>	<b>1</b>	<b>33</b>	<b>23</b>	<b>23</b>	<b>5</b>	<b>2</b>	<b>41</b>	<b>276</b>	<b>256,643</b>
<b>Angkor Chum</b>													
1	Svay Leu	FDH	MPA	0	0	1	2	0	0	2	5	30	18,678
2	Angkor Chum	FDH	MPA	0	0	4	1	1	0	1	3	20	10,348
3	Bott	HC	MPA	0	0	1	1	0	0	0	3	19	11,925
4	Char Chhouk	HC	MPA	0	0	2	1	1	0	0	2	20	10,100
5	Damnak Slanh	HC(NB)	None	0	0	0	0	0	0	0	3	11	7,902
6	Daunkeo	HC	MPA	0	0	2	3	1	1	0	1	14	13,013
7	Kouk Daung	HC	MPA	0	0	1	2	0	1	1	1	15	13,743
8	Krabei Riel	HC(NB)	None	0	0	0	0	0	0	0	2	16	9,915
9	Nokor Pheas	HC	MPA	0	0	2	1	0	1	0	2	13	10,367
10	Pouk	FDH	MPA	3	2	14	8	3	2	3	2	18	18,188
11	Reul	HC	MPA	0	0	2	1	1	2	0	2	22	18,448
12	Samraong Yea	HC	MPA	0	0	2	1	1	3	0	3	18	13,238
13	Sasar Sdam	HC	MPA	0	0	2	3	2	0	0	4	22	16,163
14	Svay Sa	FDH	MPA	0	0	2	2	0	1	0	3	16	11,142
15	Teuk Vil	HC	MPA	0	0	1	5	1	1	0	3	16	14,214
<b>Total:</b>				<b>3</b>	<b>2</b>	<b>36</b>	<b>31</b>	<b>11</b>	<b>12</b>	<b>7</b>	<b>39</b>	<b>270</b>	<b>197,384</b>
<b>Total All</b>				<b>7</b>	<b>6</b>	<b>115</b>	<b>93</b>	<b>65</b>	<b>27</b>	<b>21</b>	<b>139</b>	<b>882</b>	<b>782,179</b>

Source: MEDiCAM – Infrastructure - ([http://www.medicam-cambodia.org/hsi/health\\_system/srch/index.asp?cboLcn=6&cmdSearch=Search&cboCHName=&cboType=](http://www.medicam-cambodia.org/hsi/health_system/srch/index.asp?cboLcn=6&cmdSearch=Search&cboCHName=&cboType=))

### 11.3 Deliveries in 2007 in the Province, by Operational District

OD	Deliveries	Deliveries at home		Deliveries	Total deliveries	Total deliveries
	at HC	By Health Staff	By TBAs	at RH	by Health Staff	by health staff and TBAs
Kralanh	355	1192	1087	222	1769	2856
Siem Reap	277	6559	1910	129	6965	8875
Sot Nikum	1820	1306	2030	78	3204	5234
Ankor Chhum	1564	1861	2327	0	3425	5752
<b>Sub-total</b>	<b>4016</b>	<b>10918</b>	<b>7354</b>	<b>429</b>	<b>15363</b>	<b>22717</b>

Source: MoH, Annual Statistics 2007

## 12 Education<sup>3</sup>

### 12.1 Schools, Classes, Students, Staff, for for all levels, for 2007/2008 by District

District	Number of Schools	Disadv. Schools	Number of Classes	Classes in Pagoda	Enrollment		Repeaters		Teaching Staff		Non-Teaching Staff		Total Staff	
					Total	Girl	Total	Girl	Total	Female	Total	Female	Total	Female
Angkor Chum	44	0	330	0	14,767	7,099	1,806	902	200	67	33	5	233	72
Angkor Thom	20	0	134	0	6,263	3,135	1,230	618	74	33	14	6	88	39
Banteay Srey	29	0	220	0	10,074	4,848	1,629	746	103	57	35	17	138	74
Chi Kreng	83	0	642	0	28,484	13,701	2,709	1,140	365	167	94	25	459	192
Kralanh	47	1	321	0	14,667	6,688	1,684	697	226	73	37	8	263	81
Prasat Bakorng	49	1	377	0	17,116	7,907	1,527	604	282	170	69	24	351	194
Puok	84	2	778	0	34,779	16,551	3,559	1,377	632	326	171	46	803	372
Saut Nikum	71	4	560	1	25,181	12,279	2,512	1,118	352	210	102	25	454	235
Siemreap	68	0	1,060	2	52,899	24,317	4,257	1,636	1,291	760	295	156	1,586	916
Srey Snam	38	0	231	6	8,938	4,281	1,151	492	196	57	31	4	227	61
Svay Leu	31	0	144	6	5,743	2,726	1,205	583	80	38	7	0	87	38
Varin	26	1	179	0	7,872	3,855	1,164	598	92	22	16	1	108	23
<b>Whole Province</b>	590	9	4,976	15	226,783	107,387	24,433	10,511	3,893	1,980	904	317	4,797	2,297
- Urban Area	68	0	1,060	2	52,899	24,317	4,257	1,636	1,291	760	295	156	1,586	916
- Rural Area	465	8	3,593	7	160,269	76,489	17,807	7,694	2,430	1,160	586	160	3,016	1,320
- Remote Area	57	1	323	6	13,615	6,581	2,369	1,181	172	60	23	1	195	61

### 12.2 Characteristics of Schools and School Principals for 2007/2008 by Commune

Commune	Number of Schools				2 - Shift	Floating	Schools	Attached	Schools Without		Characteristics of School Principals (Incharge)			
	Pre-Sch	Primary	College	Lycee	Schools	Schools	in Pagoda	Pre-Sch	Water Sup.	Latrine	Avg. Age	Avg. Service	U.Sec+ Ed.	Female
Chob Ta Trav	0	4	0	0	4	0	0	0	1	0	26.0	5.5	1	0
Leang Dai	0	7	1	0	7	0	0	0	1	1	34.5	11.6	1	2
Peak Snaeng	0	3	1	0	3	0	0	0	1	1	30.4	6.8	1	0
Svay Chek	0	4	0	0	2	0	0	0	1	1	54.7	22.5	0	0

<sup>3</sup> All the data for section 12 comes from the Ministry of Education, Youth and Sport (MoEYS)

**12.3 Enrolment by Level of Education, 2006/2007 by Commune**

Commune	School	Pre school		Primary School		Lower Secondary School		Upper Secondary School		Enrolment	
		Total	Female	Total	Female	Total	Female	Total	Female	Total	Female
Chob Ta Trav	3	0	0	932	482	0	0	0	0	932	482
Leang Dai	8	0	0	2150	1060	556	298	0	0	2706	1358
Peak Snaeng	3	0	0	1110	590	0	0	0	0	1110	590
Svay Chek	4	0	0	1422	729	0	0	0	0	1422	729

**12.4 Enrolment by Level of Education, 2007/2008 by Commune**

Commune	School	Pre school		Primary School		Lower Secondary School		Upper Secondary School		Enrolment	
		Total	Female	Total	Female	Total	Female	Total	Female	Total	Female
Chob Ta Trav	4	0	0	952	431	0	0	0	0	952	431
Leang Dai	8	0	0	2053	1043	594	322	0	0	2647	1365
Peak Snaeng	4	0	0	1201	630	43	17	0	0	1244	647
Svay Chek	4	0	0	1420	692	0	0	0	0	1420	692

**12.5 Aspects of Enrolment for 2007/2008 by Commune**

Commune	% Repeaters (Total)			% Over-age Enrollment (Total)			% Repeaters (Girl)			% Over-age Enrollment (Girl)		
	Primary	L.Sec.	U.Sec.	Primary	L.Sec.	U.Sec.	Primary	L.Sec.	U.Sec.	Primary	L.Sec.	U.Sec.
Chob Ta Trav	13.4	0.0	0.0	23.7	0.0	0.0	18.6	0.0	0.0	26.5	0.0	0.0
Leang Dai	22.7	1.0	0.0	34.5	78.3	0.0	21.3	0.6	0.0	32.5	73.0	0.0
Peak Snaeng	22.3	0.0	0.0	41.1	67.4	0.0	21.6	0.0	0.0	40.6	58.8	0.0
Svay Chek	25.5	0.0	0.0	41.8	0.0	0.0	25.7	0.0	0.0	41.6	0.0	0.0

**12.6 School Buildings for all schools in the District for 2007/2008, by Commune**

Commune	Total Number of		Concrete/Brick Structure		Wooden Structure		Bamboo Structure		New Buildings		Buildings Without Good		
	Buildings	Rooms	Buildings	Rooms	Buildings	Rooms	Buildings	Rooms	Repaired	Constructed	Floor	Roof	Wall
Chob Ta Trav	5	18	5	18	0	0	0	0	0	1	0	0	0
Leang Dai	15	47	8	28	7	19	0	0	1	0	4	5	3
Peak Snaeng	7	20	4	17	1	1	2	2	0	1	0	0	0
Svay Chek	5	23	4	19	1	4	0	0	0	2	1	0	0

**12.7 Conditions of Classrooms and Existence of Separate School Office and Library, by Commune**

Commune	Number of Class rooms	Number of Classrooms			Classrooms Without Good			Number of Furniture needed				Schools with Separate	
		in Pagoda	New Repaired	New Constr.	Floor	Roof	Wall	Desks	Chairs	Black-board	Teacher Table	Office	Library
Chob Ta Trav	14	0	0	5	0	0	0	0	0	0	0	0	0
Leang Dai	34	0	3	0	10	13	10	78	52	0	20	3	2
Peak Snaeng	13	0	0	5	0	0	0	0	0	0	0	1	1
Svay Chek	18	0	0	10	0	0	0	25	15	6	4	1	1

**12.8 Community Participation and Financing across all schools in the District for 2007/2008 by Commune**

Commune	Parent Association				Commu. Teachers	Teaching Monks	PAP Fund (Riel)		Number of Schools Obtaining Funds from				
	Exists	Held Meet	Total	Female			per Student	per School	Sch. Income	Community	Gvt. For building	Abroad	IOs/NGOs
Chob Ta Trav	1	1	6	1	0	0	-	-	0	1	0	0	1
Leang Dai	6	6	8	2	0	0	10,252	5,467,800	0	0	0	0	0
Peak Snaeng	3	3	3	1	0	0	9,678	3,140,400	0	0	0	0	0
Svay Chek	2	2	23	2	0	0	3,999	1,611,667	0	0	0	0	0

**12.9 Percentage Student Flow Rates and Graduation by level 2006/2007, by Commune**

Commune	Primary Level (Grades 1-6)			Lower Secondary Level (Grades 7-9)			Upper Secondary Level (Grades 10-12)			Successful Candidates		
	Promotion	Repetition	Dropout	Promotion	Repetition	Dropout	Promotion	Repetition	Dropout	Grade 6	Grade 9	Grade 12
Chob Ta Trav	51.4	13.7	34.9	0.0	0.0	0.0	0.0	0.0	0.0	47	0	0
Leang Dai	62.7	21.7	15.7	82.9	1.1	16.0	0.0	0.0	0.0	135	99	0
Peak Snaeng	61.3	24.1	14.6	0.0	0.0	0.0	0.0	0.0	0.0	63	0	0
Svay Chek	65.5	25.5	9.1	0.0	0.0	0.0	0.0	0.0	0.0	59	0	0

## 13 Staff and Resources at the District

*This chapter presents data from the District Information System, collected around the middle of 2009 unless otherwise specified.*

### 13.1 District Councilors elected in 2009

Name	Sex	Year of Birth	Function	Phone
ប៊ុត កាវី	M	1948	Chairperson of The Council	012-971 674
កែ ជីវ	M	1953	Councillor	012-935 788
ពេក ញ៉ែម	M	1955	Councillor	012-495 106
ស៊ុន សុទ្ធា	M	1953	Councillor	012-879 346
ស្រី វ៉ា	M	1956	Councillor	012-534 220
មី ម៉ុញ	M	1955	Councillor	089-427 426
ដោ វណ្ណនេត	M	1962	Councillor	012-947 818
ស៊ី យ៉ឿន	F	1962	Councillor	092-968 684
ទូច សារុន	M	1962	Councillor	092-561 394
ប្រម ប្រែង	M	1962	Councillor	092-950 176
អ៊ុំ សុផាត	M	1977	Councillor	012-795 339

### 13.2 Committees of the Council

*Please note at the time of producing the district data books the composition of the committees was not known for all district councils and therefore data were not available for 13.2.1, 13.2.2, 13.2.3.*

#### 13.2.1 Technical Facilitation Committee

#### 13.2.2 Women's and Children's Affairs Committee

#### 13.2.3 Procurement Committee

### 13.3 Board of Governors

Name	Sex	DoB	Function	Salary Level	Body	Phone
ធឿន ជាន	M	1957	District Governor	ខ.១.១	Medium Civil Servant	012-949 784
ជិន សុភាព	M	1963	District Deputy Governor	ខ.១.៥	Medium Civil Servant	012-382 360
ឿន គីណា	F	1976	District Deputy Governor	ខ.៣.១៤	Ministry of Education, Youth and Sports	092-876 068

### 13.4 Offices under Sala Krong, Sala Srok and Sala Khan

Office Name	Chief		Deputy Chief		No. of Staff				Office Area (m2)	No of vehicle (public or program)	
					State		Contract			vehicle	moto
	M	F	M	F	M	F	M	F			
District/ Khan Cabinet	1	0	1	0	0	0	2	1	364	0	0
Adminnistration Office	1	0	1	0	9	0	0	0	Borrow	0	0
Economy Office	1	0	1	0	0	0	0	0	Borrow	0	0
Social Affair Office	1	0	0	1	0	0	0	0	Borrow	0	0

### 13.5 Municipality/District/Khan line offices

Office Name	Chief		Deputy Chief		No. of Staff				Office Area (m2)	No of vehicle (public or program)	
					State		Contract				
	M	F	M	F	M	F	M	F		vehicle	moto
Planning Office	1	0	2	0	0	0	0	0	Borrow	0	0
Education Office	1	0	1	0	97	41	0	0	Borrow	0	0
Agriculture Office	0	0	0	0	2	0	0	0	20	0	0
Social Affairs Office	0	1	1	0	0	0	0	0	Borrow	0	0
Cult and Religion Office	0	0	0	0	0	0	1	0	Borrow	0	0
Finance Office	1	0	0	0	0	0	0	0	Borrow	0	0
Information Office	1	0	0	0	0	0	0	0	Borrow	0	0

### 13.6 Properties and Equipment of District Administration

#### 13.6.1 Buildings

Description	Unit	Number	Remark
Office building type			
- Concrete	building	1	
- Wood	building	0	
- Mixed	building	0	
Total floor space	m2		
- Concrete	m2	364	
- Wood	m2	0	
- Mixed	m2	0	
Building condition			
- Concrete	%	30	
- Wood	%	0	
- Mixed	%	0	
Office reserved land area	m2	0	
Total office land area	m2	16,768	

#### 13.6.2 Means of Transport available at the District Administration

Description	Unit	Number	Remark
Vehicle (type, size and condition)	Vehicle	0	
Motorcycle (type, size and condition)	Motor	0	

**13.6.3 Equipment in District Offices**

Description	Unit	Number	Remark
Generator	per set	0	
Photocopy machine at the office	per set	0	
Private photocopy machine at the district town	place	0	
Telephone network (mobile line service)	network	1012	
Telephone network (land line service)	network	0	
Fax (include Fax number)	per set	0	
Computer	per set	0	
Printer	per set	0	
Scanner	Per set	0	
Number of computers those can access Internet and email services in the municipality/ district/khan office (including the technical line offices (please provide the email address)	set	0	
Typewriters (including the technical line offices)	per set	0	
Staff of Municipality/district/khan office can use computer	person	2	

**13.6.4 Equipment and facilities at the District Town**

Description	Unit	Number	Remark
Availability of electricity at noon	Nr Hours	0	
Private internet and email services in the municipality/ district/khan town.	place	0	

**13.7 Registered Revenue of the District Administration in 2008<sup>4</sup>****13.8 Services in the District****13.8.1 Public Sector Services**

Type of Infrastructure/services	Unit	Number	
		Public	Private
Schools			
Pre-school	room	14	0
Primary School	room	91	0
Secondary school	room	12	0
High School	room	20	0
University	room		
Health			
Health post	place	1	0
Health center	place	2	0
Referral Hospital	bed		

<sup>4</sup> Please note that the data in this table are at best estimates. If the table appears blank it does not mean there is no revenue, just that the data have not been recorded/entered.

### 13.9 Civil Society Organizations active in the District

#### 13.9.1 NGOs, Associations, Programs and Projects

Name	Abbr.	Sector Activities	No. of Target Communes	No. of Target Villages	Office in District
NA	NA	ផ្នែកឥណទានអាគារលក់	3	3	No
NA	NA	ធនាគារភូមិឥណទាន កសិកម្ម	1	7	No
NA	NA	វិស័យអប់រំ	4	25	No
NA	NA	ផ្នែកសុខភាព	4	0	No
NA	NA	ជួយផ្នែកកាត់បន្ថយអំពើហិង្សា	4	25	No
NA	NA	មតេយ្យសហគមន៍	4	17	No
NA	NA	វិស័យអប់រំអាហារូបករណ៍	1	5	No

#### 13.9.2 Political Parties active in the Municipality, District and Khan

Name	Abbr.	Office in District
Cambodian People Party	CPP	Yes
FUNCINPEC Party	FUNCINPEC	Yes
SAM RAINSY Party	Sam Rainsy Party	Yes



### 13.10 Private Sector Organizations

#### 13.10.1 Registered Companies in 2008, by District

On private sector at commune and/or district level	SRP	Angkor Chum	Angkor Thum	Banteay Srei	Chi Kraeng	Kralanh	Puok
<b>Businesses and Companies</b>							
Number of registered agricultural enterprises (except family farms)	3	0	0	0	0	0	1
Number of registered shops, restaurants, transporters and other services	1,553	n/a	n/a	1	4	6	10
Number of manufacturing companies	-	0	0	0	0	0	0
Number of registered forestry enterprises	-	0	0	0	0	0	0
Number of registered mining companies	n/a	n/a	n/a	n/a	n/a	n/a	n/a
Number of financial institutions	40	2	1	2	4	4	5
Number of other commercial institutions	n/a	n/a	n/a	n/a	n/a	n/a	n/a
Estimated number of informal enterprises (not registered)	n/a	n/a	n/a	n/a	n/a	n/a	n/a
<b>Employment</b>							
Number of people employed in 2008 by companies or any other enterprises	6,431	38	83	411	452	164	140
<b>Investment</b>							
Amount invested in 2008 by private sector (\$)	n/a	n/a	n/a	n/a	n/a	n/a	n/a
<b>Markets</b>							
Number of markets, operating at least weekly	22	1	1	1	1	2	1

Continue...

On private sector at commune and/or district level	SRP	Prasat Bakong	Siem Reab	Soutr Nikom	Srei Snam	Svay Leu	Varin
<b>Businesses and Companies</b>							
Number of registered agricultural enterprises (except family farms)	3	0	2	0	0	0	0
Number of registered shops, restaurants, transporters and other services	1,553	3	1,521	6	n/a	n/a	2
Number of manufacturing companies	-	0	0	0	0	0	0
Number of registered forestry enterprises	-	0	0	0	0	0	0
Number of registered mining companies	n/a	n/a	n/a	n/a	n/a	n/a	n/a
Number of financial institutions	40	5	9	5	1	1	1
Number of other commercial institutions	n/a	n/a	n/a	n/a	n/a	n/a	n/a
Estimated number of informal enterprises (not registered)	n/a	n/a	n/a	n/a	n/a	n/a	n/a
<b>Employment</b>							
Number of people employed in 2008 by companies or any other enterprises	6,431	695	4,076	327	9	4	32
<b>Investment</b>							
Amount invested in 2008 by private sector (\$)	n/a	n/a	n/a	n/a	n/a	n/a	n/a
<b>Markets</b>							
Number of markets, operating at least weekly	22	2	8	4		0	1

**Note:** These data are not comprehensive as different companies and business are registered with different departments and not all departments were able or willing to provide detailed information. The number of informal enterprises reflects a rough estimate, made at provincial level and could not be verified.

**Source:** Unofficially collected at Provincial Level

### 13.10.2 Farmers in 2008, by District

*There were no data available for this district at the time data collection*

**Note:** Please note that these data are not necessarily complete or correct. The data are derived from government agencies at provincial and district level which used different recording systems, did not always have complete data or were, sometimes, less than willing to share their data.

**Source:** Unofficially collected at Provincial Level

## **SECTION E: POVERTY DATA**



## 14 Data on Poverty

### 14.1 Predicted Poverty Rates for 2009, by commune

The **Predicted Family Poverty Rate** is based on a statistical model (robust multilevel mixed effect regression) at village level developed by the NCDD M&E Unit and uses CDB data for making an estimate of the predicted poverty rate (this is: the portion of total families in the district or commune who are expected to be poor) for the following year using current year data.

The basis for this predicted poverty rate also uses IDPoor (a project of the Ministry of Planning with technical assistance provided by GTZ) data

Commune	2004	2009
Chob Ta Trav	52.20%	41%
Leang Dai	46.70%	34.20%
Peak Snaeng	47.30%	35.70%
Svay Chek	50.20%	35.30%

### 14.2 Poverty data from survey

#### 14.2.1 Identification of Poor Households Program (IDPoor)

The Ministry of Planning IDPoor Program has developed standardized Procedures for Identification of Poor Households in rural areas. These Procedures are implemented using a participatory and consultative process by sub-national government structures and community representatives.

The IDPoor Program is managed by the Ministry of Planning (MOP), in cooperation with the Ministry of Interior's Department of Local Administration (DOLA). The program is supported by the Federal Republic of Germany, with technical assistance provided by German Technical Cooperation (GTZ). In 2009, AusAID also provided funding support to the Program.

#### Objective

The IDPoor Program aims to implement the Procedures for Identification of Poor Households in rural areas as widely as possible, in order to provide data on the level of poverty of areas and households that can be used by a large range of institutions and organizations for targeting services and development assistance to poor areas and poor households.

**Coverage:** During 2007, 2008 and 2009 the IDPoor Procedures have been implemented in 18 provinces (with partial or complete coverage), covering a total of around 7000 rural villages. The MOP and a number of NGO partners who are Health Equity Fund Operators have collaborated in collecting this data from different areas.

**Categorization:** Identified poor households are classified under two poverty categories: Poor Level 1 (very poor), and Poor Level 2 (poor). Households are classified based on data collected using a standard questionnaire, together with consideration by villagers of these households' special circumstances.

**Further information:** Please go to the IDPoor Program webpage at

[www.mop.gov.kh/Projects/IDPoor/tabid/154/Default.aspx](http://www.mop.gov.kh/Projects/IDPoor/tabid/154/Default.aspx)

Commune	Poor 1 HHs	Poor 2 HHs	Poor 1 HHs	Poor 2 HHs	Total Poor 1&2 HHs	Total HHs in Commune
Chob Ta Trav	170	72	25.6%	10.8%	36.4%	665
Leang Dai	394	340	23.6%	20.4%	44.0%	1667
Peak Snaeng	245	134	29.0%	15.8%	44.8%	846
Svay Chek	129	155	11.9%	14.3%	26.1%	1087

